



Grizzly Discoveries Inc.

A Canadian Exploration Company

Focused on Precious & Base Metals in British Columbia, Canada

May, 2020

GZD

Forward Looking Statements

- This presentation contains certain “forward-looking statements”. Such forward-looking statements include, without limitation:
 - estimates of future capital expenditures;
 - estimates of resources and statements regarding future exploration results, timing and amount of estimated future exploration
 - success of exploration, development and production activities.
 - expenditures; permitting; and requirements for additional capital and access to data.
- Where the Company expresses or implies an expectation or belief as to future events or results, such expectation or belief is expressed in good faith and believed to have a reasonable basis. However, forward-looking statements are subject to risks, uncertainties and other factors, which could cause actual results to differ materially from future results expressed, projected or implied by such forward looking statements. Such risks include, but are not limited to metals price volatility, currency fluctuations, increased production costs and variances in ore grade or recovery rates from those assumed in mining plans, as well as political and operational risks in the countries and states in which we operate or sell product to, and governmental regulation and judicial outcomes.
- The Company does not undertake any obligation to release publicly any revisions to any “forward looking statement” to reflect events or circumstances after the date of this presentation, or to reflect the occurrence of unanticipated events, except as may be required under applicable securities laws. The following presentation does not constitute an offer to sell or solicitation of an offer to buy any securities of Grizzly Discoveries Inc.
- In addition, certain information provided in this presentation has been taken from 3rd party sources and 3rd party reports and/or presentations and has not been independently verified by the company. Readers are cautioned not to place undue reliance on such information.

Grizzly Canadian Projects



Precious Metal & Base (Battery) Metal properties
Covering 160,000 acres

Advanced projects with numerous existing targets

Potential for new discoveries

Proven, Prolific & Historic mining jurisdiction

Full road access with logistical advantages

Focus on Ket 28 Gold Project
Drilling includes **3.35 meters** at **52.18g/t gold**

First Nations – Supportive & Active Partner

Potential to Joint Venture multiple projects

Gold Sector Resurgence

Market-Beating Rally

Gold and miners have outperformed the global market



Source: Bloomberg

Grizzly's Focus on Precious Metals Provides Leverage to Gold & Silver Price

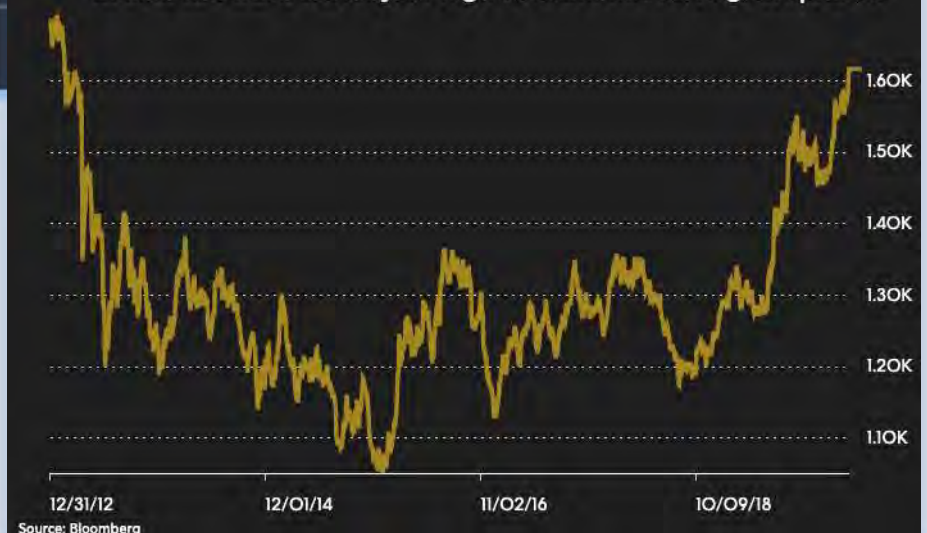
Grizzly is undervalued in the face of this resurgence in precious metal pricing

Gold Price Surging to 7 Year Highs



GOLD SURGES ON PANDEMIC FEARS

Bullion hits fresh seven-year high as economic contagion spreads



Management & Directors

BRIAN TESTO President, CEO, Director	IAN LAMBERT Chief Operating Officer	JEREMY STRAUTMAN Chief Financial Officer	MICHAEL DUFRESNE M.Sc., P.Geol., P.Geo. Consultant
<p>Mr. Testo, founder of the Company, is an Alberta-based businessman who has been involved in mineral exploration and prospecting in Alberta and British Columbia for over 25 years.</p>	<p>Mr. Lambert is a well known Toronto-based resource development executive with over 30 years experience managing public companies in the mining, oil & gas, technology and life science sectors. Mr. Lambert was formerly CEO and Director for 21 years of Trade Winds Ventures Inc., a TSX Venture Top 50 company.</p>	<p>Mr. Strautman, a graduate of the Northern Alberta Institute of Technology's Bilingual Business Administration-Accounting Program, has been involved in accounting and administration for the junior mineral exploration industry since 2005.</p>	<p>Mr. Dufresne is a partner with APEX Geoscience Ltd., an established geological consulting company. His experience includes diamonds, gold and base metal exploration in Alberta, B.C., Nunavut, NWT and Australia.</p>
JIM GREIG, DIRECTOR & ADVISOR	RAY WYTNICK Director	DR. SOLOMON (SAM) PILLERSDORF Director	JO PRICE M.Sc., MBA, P.Geo Director
<p>Mr. Greig holds an MBA from the University of Calgary, a BA from Carleton University and +20 years of experience in the resource sector. Selected international resource sector engagements include Keegan Resources, Brilliant Mining, Hunter-Dickinson Group, Kennecott, Breakwater Resources, McIntosh and Stantec Engineering.</p>	<p>Mr. Wytnick holds a Master's of Science degree from the University of Manitoba and has been active in the Agri-business sector for over 25 years.</p>	<p>Dr. Pillersdorf has been involved in the mining sector for over 10 years, including funding start-up mining companies and sourcing and funding resource claims.</p>	<p>Ms. Price is an independent geological consultant to junior mining and exploration companies with more than 20 years in the field. She has worked on multiple gold, poly-metallic, and graphite projects in the USA, Australia, and Canada.</p>

Capital Structure

As of 1Q 2020

Share Structure

Shares I/O: 67.1 Million
Warrants/Options: 13.2 Million
Shares FD: 80.3 Million

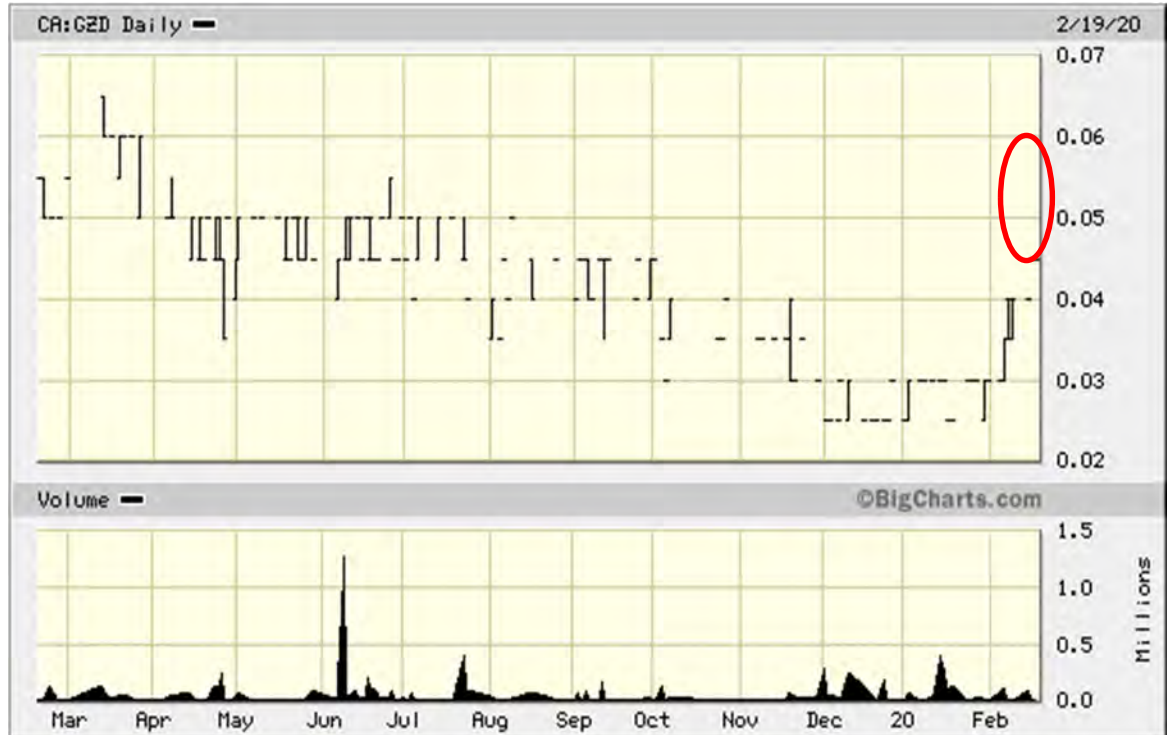
Working Capital

Treasury: \$0.125 Million
Share Price: \$0.05
52-week High/Low: \$0.15/\$0.025
Market Cap: \$3.3 Million

Share Ownership

Management: 22.5%
Friends & Associates: 40.0%
Retail: 37.5%

TSX-V: GZD - FWB: G6H - OTCQB: GZDIF



Grizzly Shareholders have *NEVER* seen a Roll-Back
Insiders have maintained a significant position from inception in 2005

Greenwood, BC, Canada – Precious & Base Metals

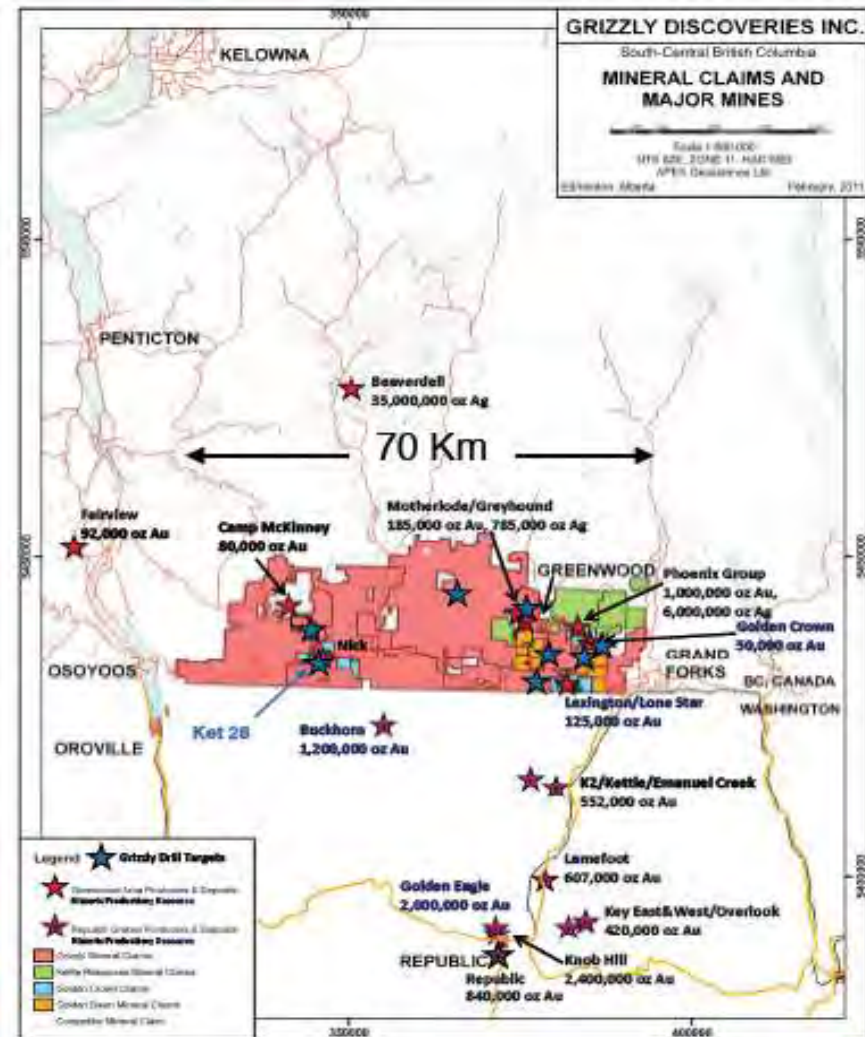
160,000 acres
~70 km x ~27 km
Contiguous land package

Gold producing jurisdiction
along Canada-USA border

The District collectively
produced more than 7+ million
gold ounces*

13km from Kinross' 1.3+
Million oz Buckhorn Gold Mine
(produced avg grade >13 g/t)

50km from Fiore's Golden
Eagle mine with 2+ Million oz
gold resource**



*Source: M. Dufresne, A. Banas, K. Salter. "Assessment Report for the Robocop Property, South-Eastern British Columbia," APEX Geoscience Ltd. Edmonton, AB, Tech. Rep. March. 2013.

**Source: E. Chapman, T. Seal, "Golden Eagle Project, Washington State, USA", Snowden Group, Tech. Rep. July, 2009

Greenwood – Republic Production & Resource Highlights

- 7+ Moz Au Production*; 1.37 Moz Au Greenwood Area, 5.8 Moz Au Republic Area
- Significant Ag and Cu Production (25+ Moz Ag and 660 Million lbs Cu)
- Main Greenwood Producers: Phoenix (Knob Hill), Motherlode, Dentonia, Mt McKinney, Golden Crown – Winnipeg
- Main Republic Producers: Hecla produced 2+ Moz at Knob Hill – Golden Promise, others include Buckhorn, Lamfoot, Overlook, K2, Emmanuel Ck, Key
- Still in resources > 6+ Moz Au and with significant Ag; Lexington – Golden Crown, Lone Star, Golden Eagle, Republic - Golden Promise - KH

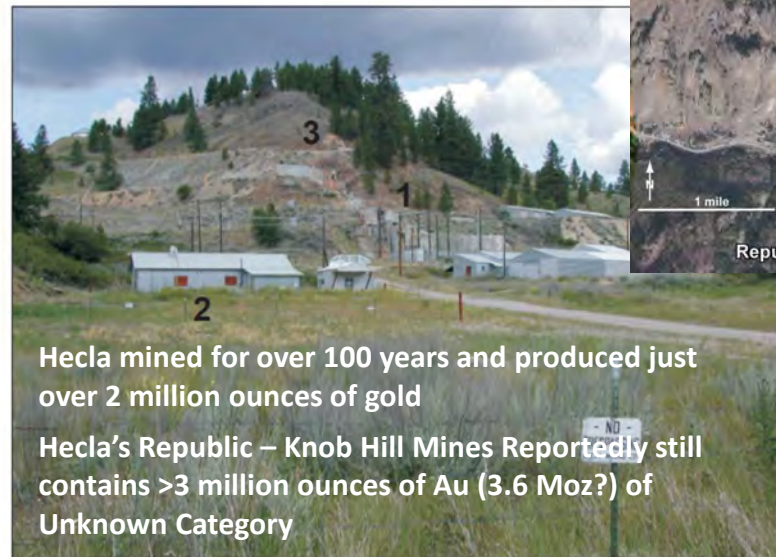
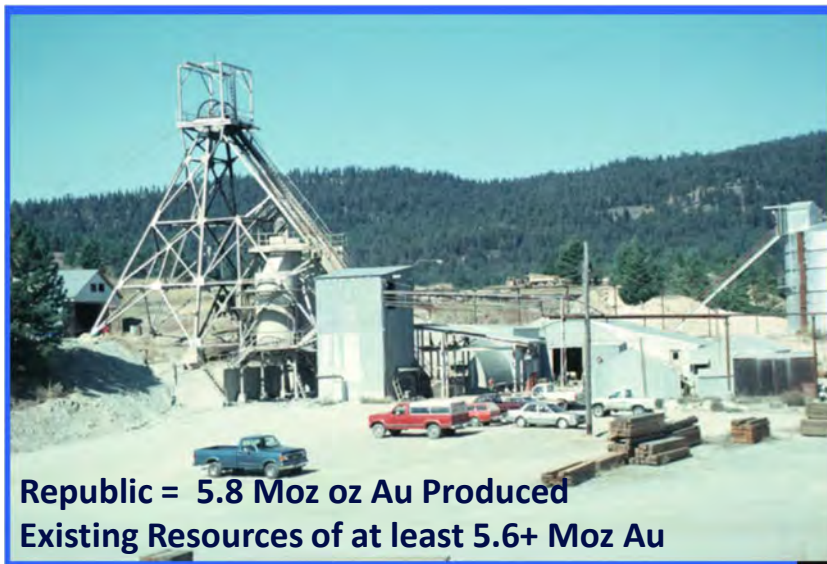


Figure 18. Hecla's Knob Hill mine site 2001, showing mill foundations (1), shop buildings (2), circa-1920 adits on Knob Hill (3). View is to the north.



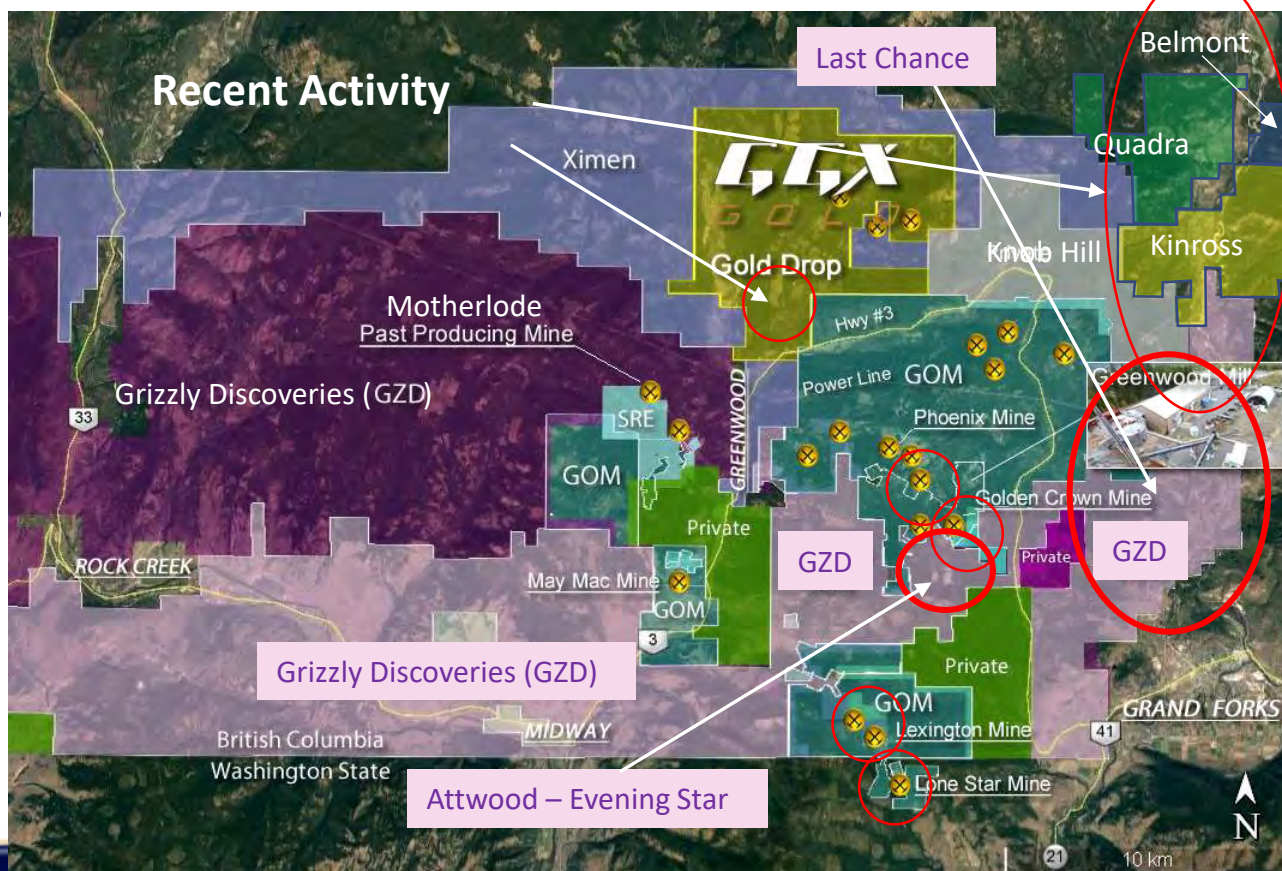
*Source: M. Dufresne, A. Banas, K. Salter. "Assessment Report for the Robocop Property, South-Eastern British Columbia," APEX Geoscience Ltd. Edmonton, AB, Tech. Rep. March. 2013.

Greenwood Recent Activity

South Central British Columbia, Canada

- Grizzly Discoveries Inc.
- Golden Dawn Minerals Inc.
- GGX Gold Corp.
- Ximen Mining Corp.
- Belmont Resources Inc.
- Kinross Gold Corp.

- Knob Hill Silver Inc.
- Coast Mountain Geological
- Quadra Coastal



Attwood – Evening Star Undrilled Target



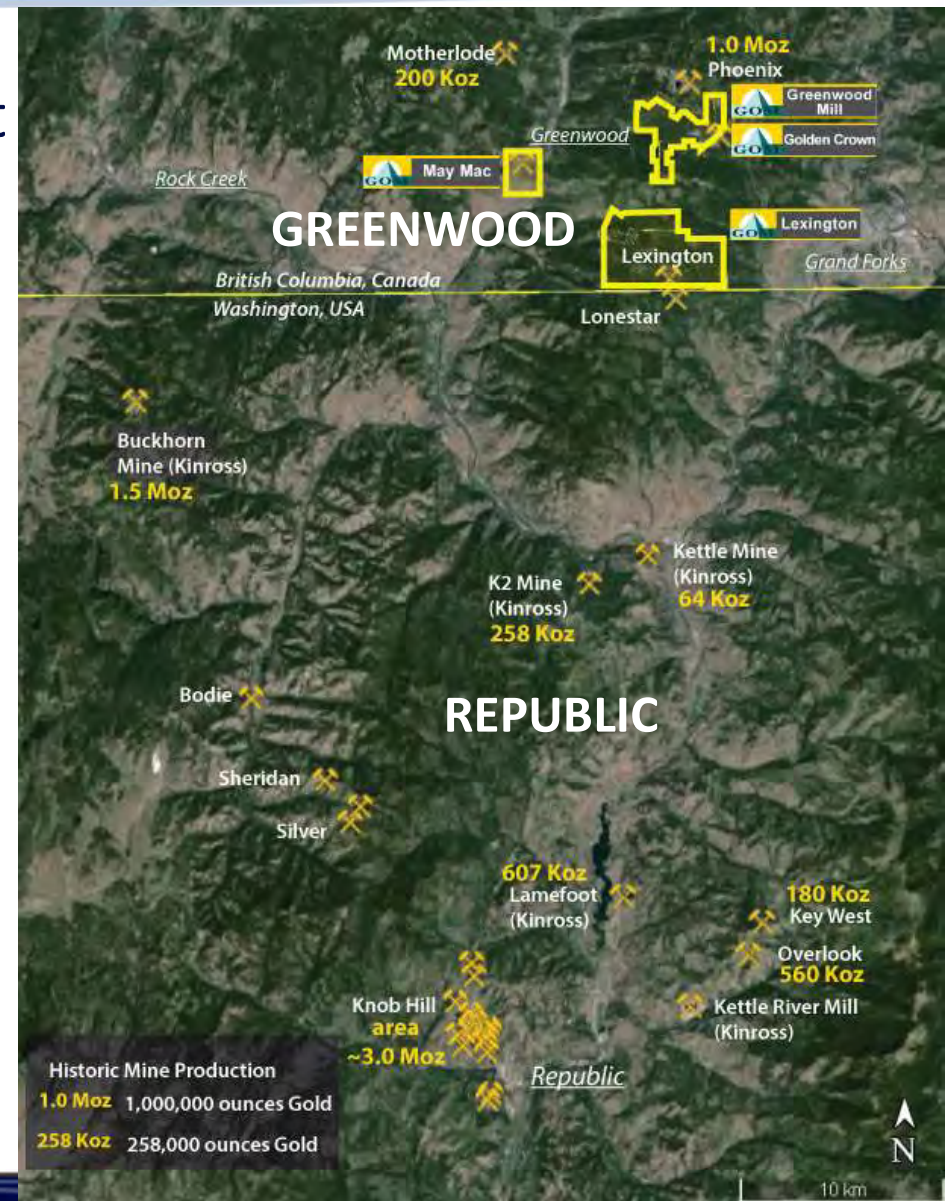
The Greenwood Gold District aka Greenwood – Republic Gold District

Active Companies in the US

- Adamera Minerals Inc. – Hochschild JV
- Fiore Gold Inc. (New Resource)
- Hecla Mining Company
- Kinross Gold Corp.
- Kettle River Mill on Care & Maintenance

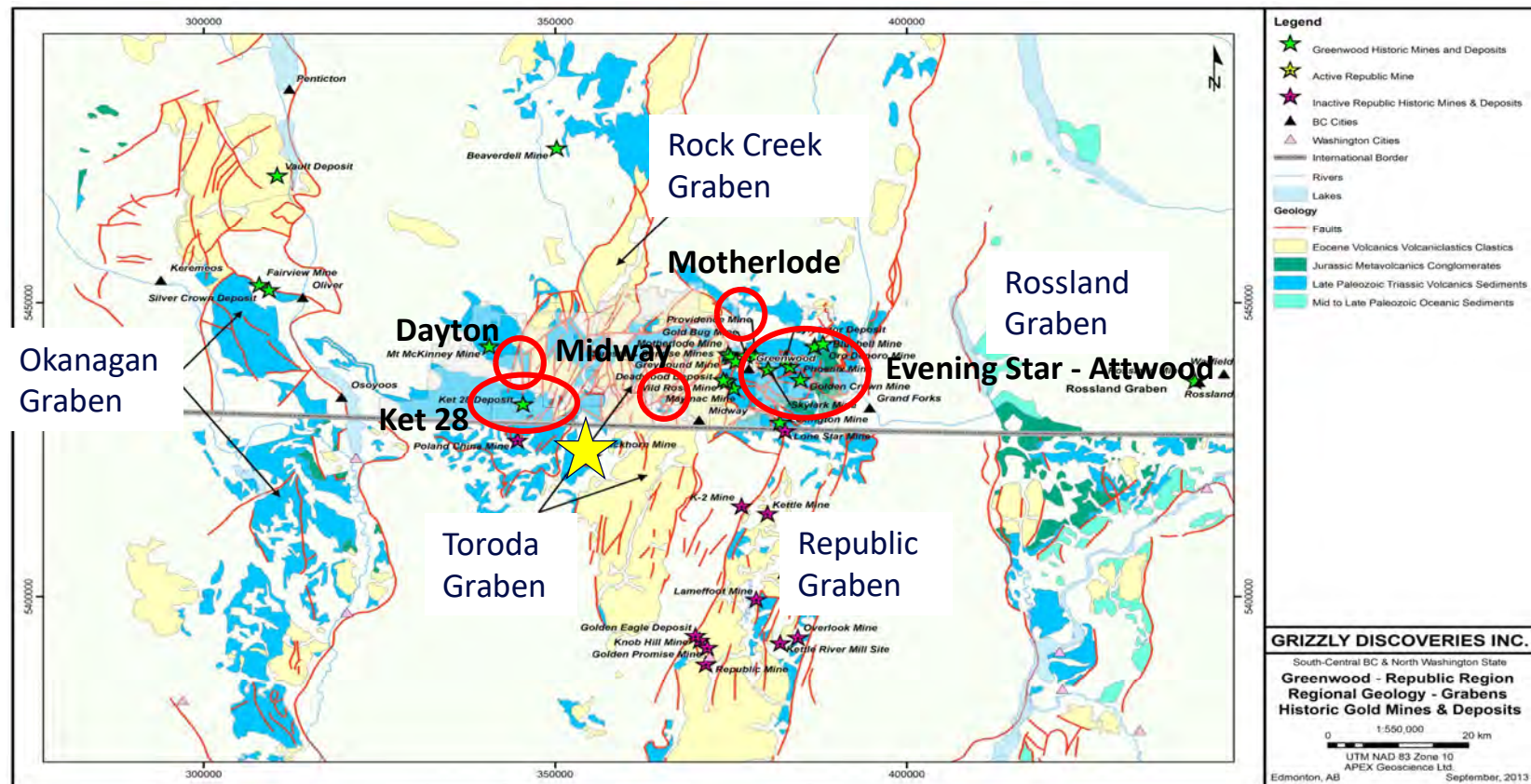
Geology Links these two Districts!

World Class Gold District! If it was all part of BC it would be in the top two producing gold districts in BC!



Greenwood Claim Groups South Central British Columbia, Canada

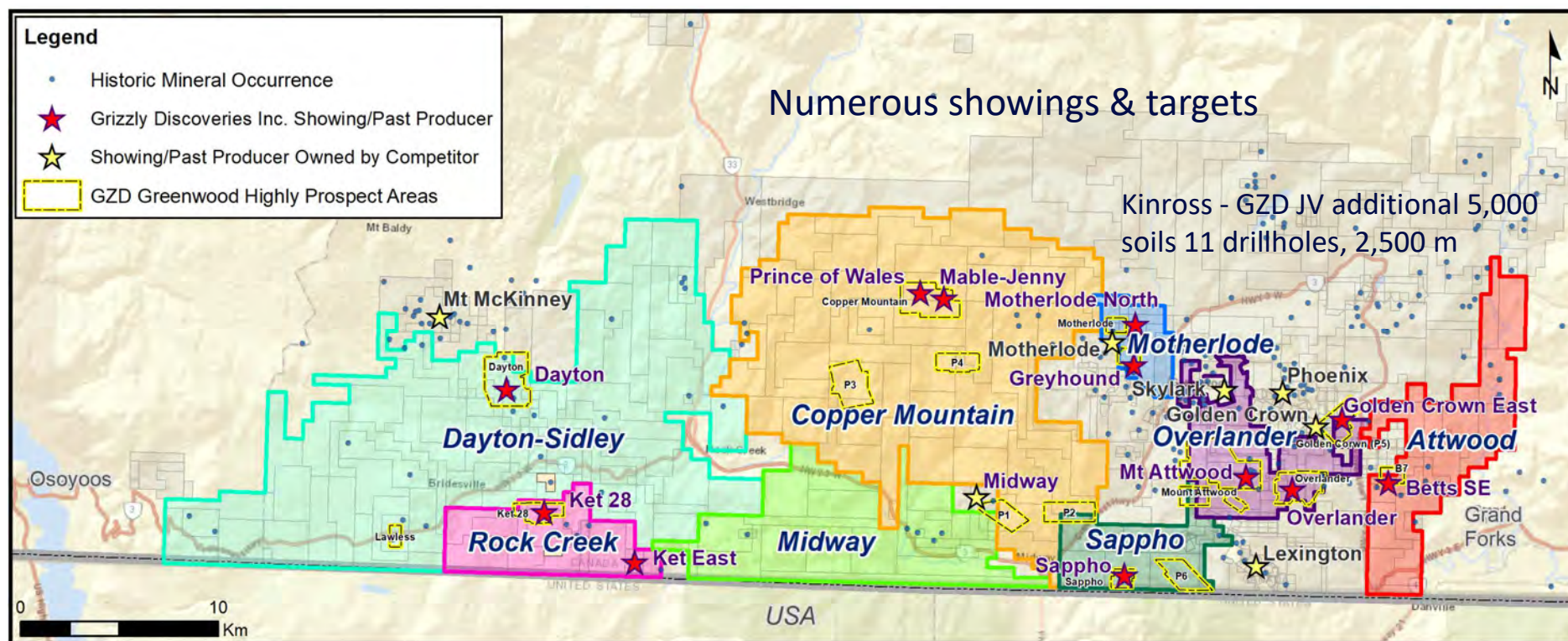
Mineralization & Grabens – Greenwood & Beyond!



Structures associated with the grabens, particularly their edges, have been conduits for intrusive activity, hydrothermal fluids and precious and base metal mineralization

Greenwood Claim Groups

South Central British Columbia, Canada



2,673 rock samples



10,218 soil samples



169 HMC samples



2,026 line-km of geophysics



10,397m in 58 holes of core drilling (2009 to 2012)



Advanced Targets

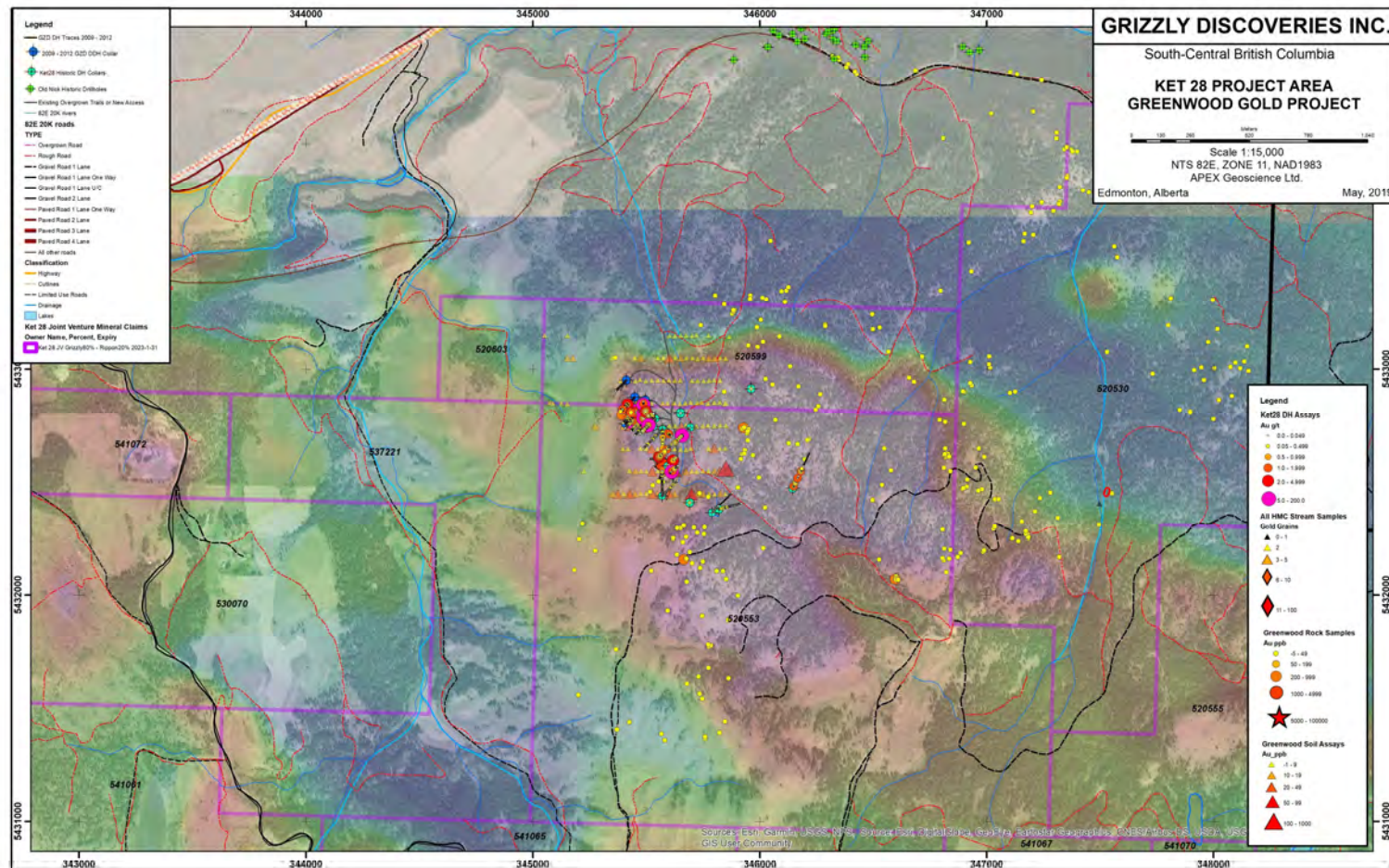
Grizzly Greenwood Drilling Highlights

Target	Drillhole	Interval (m)	Gold (g/t)	Silver (g/t)
Ket 28	KT-1	6.1	8.91	
Ket 28	94RM1-2C	3.35	52.18	
Ket 28	9KT01	11.0	2.77	2.38
Ket 28	9KT02	2.0	11.9	3.2
Copper Mountain	10CM07	30.0	1.0	4.65
<i>includes</i>	10CM07	5.0	4.31	10.14
Copper Mountain	10CM11	7.0	1.1	2.12
Dayton	10DA02	86.5	0.18	
Dayton	11DA09	51.0	0.43	0.81
Motherlode	11ML03	4.5	6.07	15.13
<i>includes</i>	11ML03	1.5	17.15	41.7
Motherlode	11ML05	14.85	1.64	3.15
<i>includes</i>	11ML05	1.5	6.79	11.10

Source: M. Dufresne, A. Banas, K. Salter. "Assessment Report for the Robocop Property, South-Eastern British Columbia," APEX Geoscience Ltd. Edmonton, AB, Tech. Rep. March. 2013.

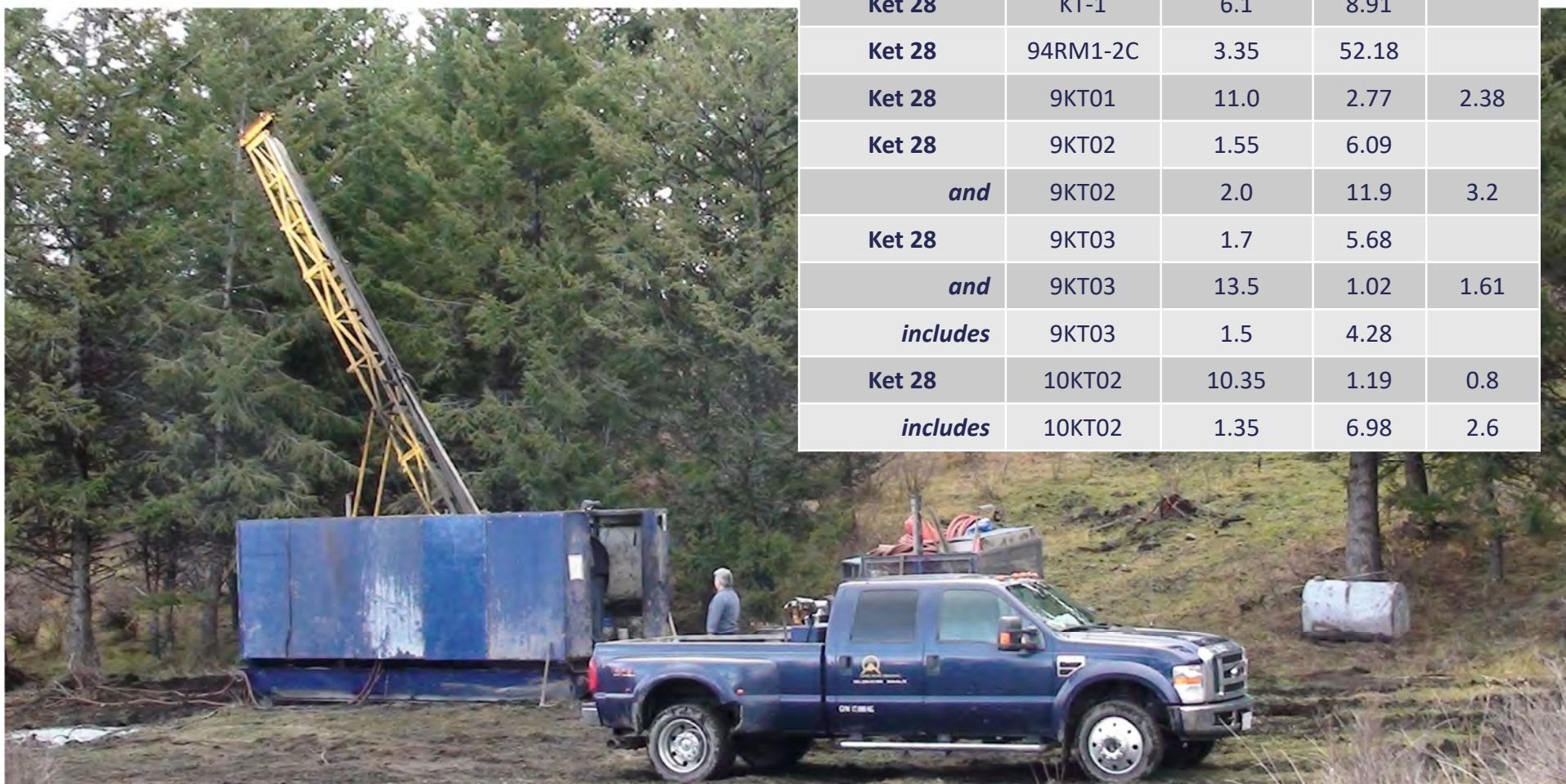
TSX.V : GZD

Focus 2020 - Ket 28 Part of a Large Intrusive System?



Ket 28 showing exists on the edge of a sizeable deep seated magnetic feature
That is likely indicative of an intrusion–mineralization in Paleozoic Anarchist rocks

Ket 28 Drilling Highlights



Target	Drillhole	Interval (m)	Au (g/t)	Ag (g/t)
Ket 28	KT-1	6.1	8.91	
Ket 28	94RM1-2C	3.35	52.18	
Ket 28	9KT01	11.0	2.77	2.38
Ket 28	9KT02	1.55	6.09	
<i>and</i>	9KT02	2.0	11.9	3.2
Ket 28	9KT03	1.7	5.68	
<i>and</i>	9KT03	13.5	1.02	1.61
<i>includes</i>	9KT03	1.5	4.28	
Ket 28	10KT02	10.35	1.19	0.8
<i>includes</i>	10KT02	1.35	6.98	2.6

Ket 28 showing exists on the edge of a sizeable deep seated magnetic feature
That is likely indicative of an intrusion–mineralization in Paleozoic Anarchist rocks

Ket 28 Drilling Highlights



Target	Drillhole	Interval (m)	Au (g/t)	Ag (g/t)
Ket 28	KT-1	6.1	8.91	
Ket 28	94RM1-2C	3.35	52.18	
Ket 28	9KT01	11.0	2.77	2.38
Ket 28	9KT02	1.55	6.09	
<i>and</i>	9KT02	2.0	11.9	3.2
Ket 28	9KT03	1.7	5.68	
<i>and</i>	9KT03	13.5	1.02	1.61
<i>includes</i>	9KT03	1.5	4.28	
Ket 28	10KT02	10.35	1.19	0.8
<i>includes</i>	10KT02	1.35	6.98	2.6

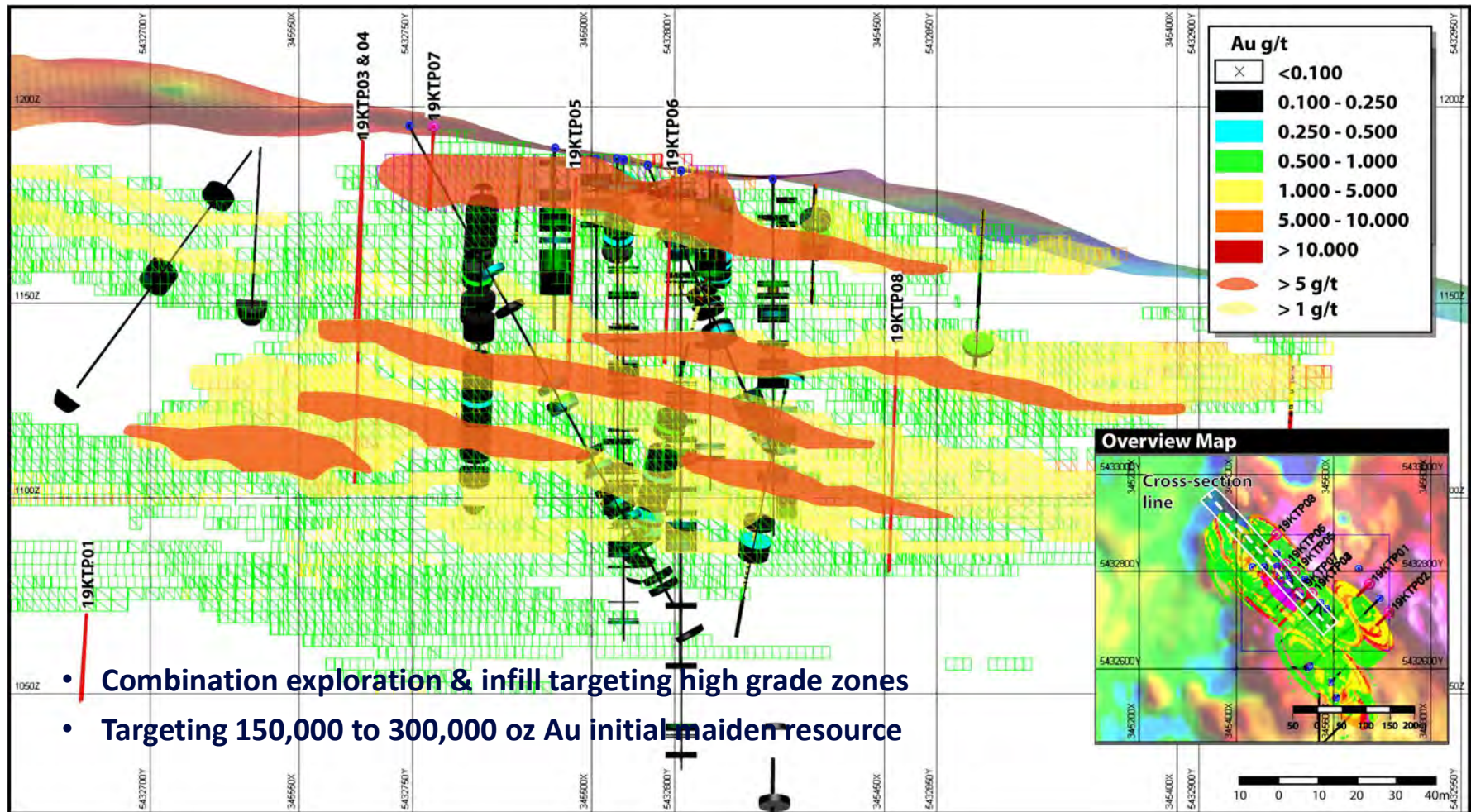
DH 9KT02

Highly altered Paleozoic sediments and volcanics – sericite, quartz veining, silification, pyrite



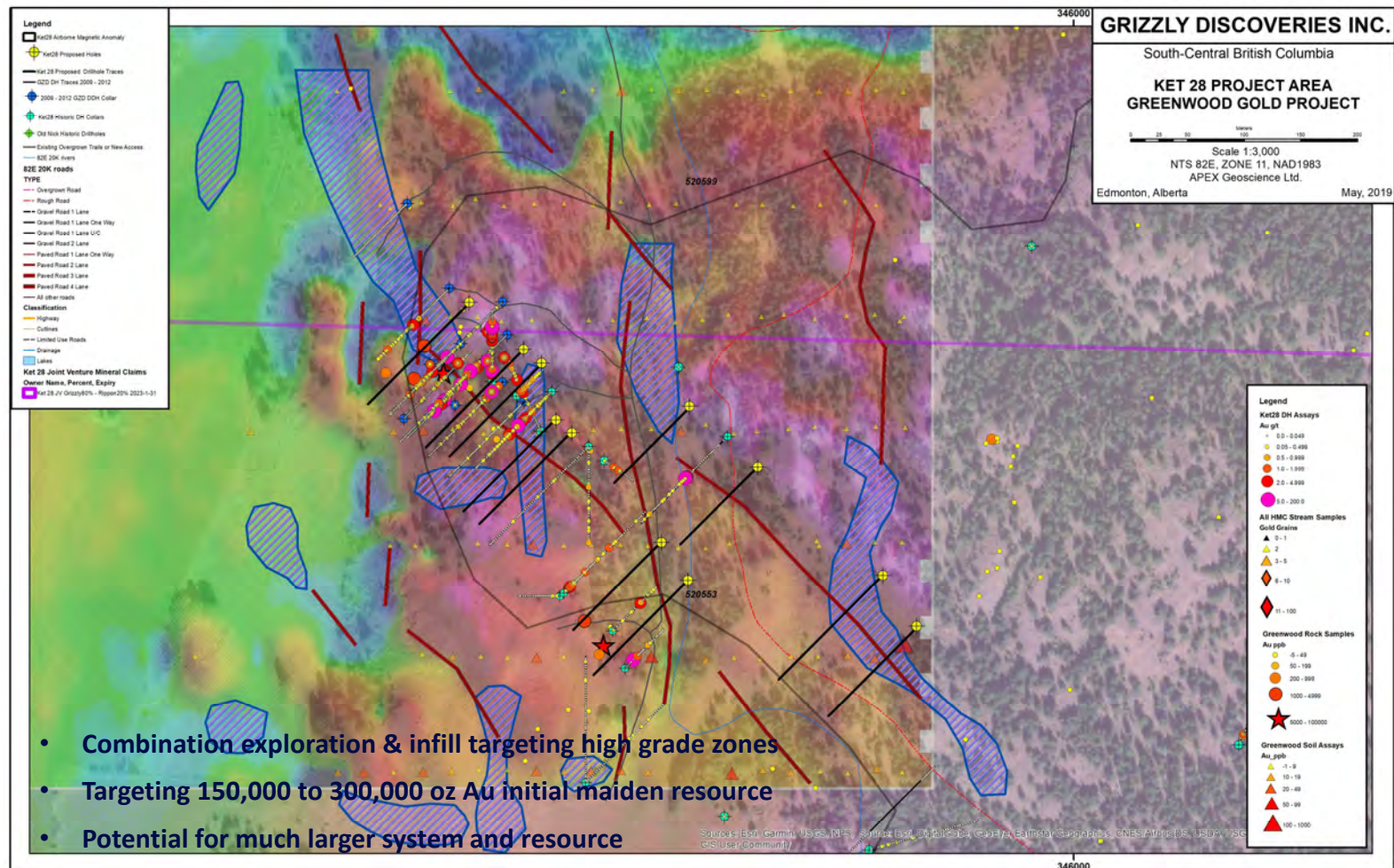
Ket 28 showing exists on the edge of a sizeable deep seated magnetic feature
That is likely indicative of an intrusion–mineralization in Paleozoic Anarchist rocks

Ket 28 Drilling Highlights



Main Zone Long Section with Gold Zones and Proposed Drill Holes

Ket 28 – 2020 Planned Drilling Program



Lexington Mill near the Golden Crown Deposit

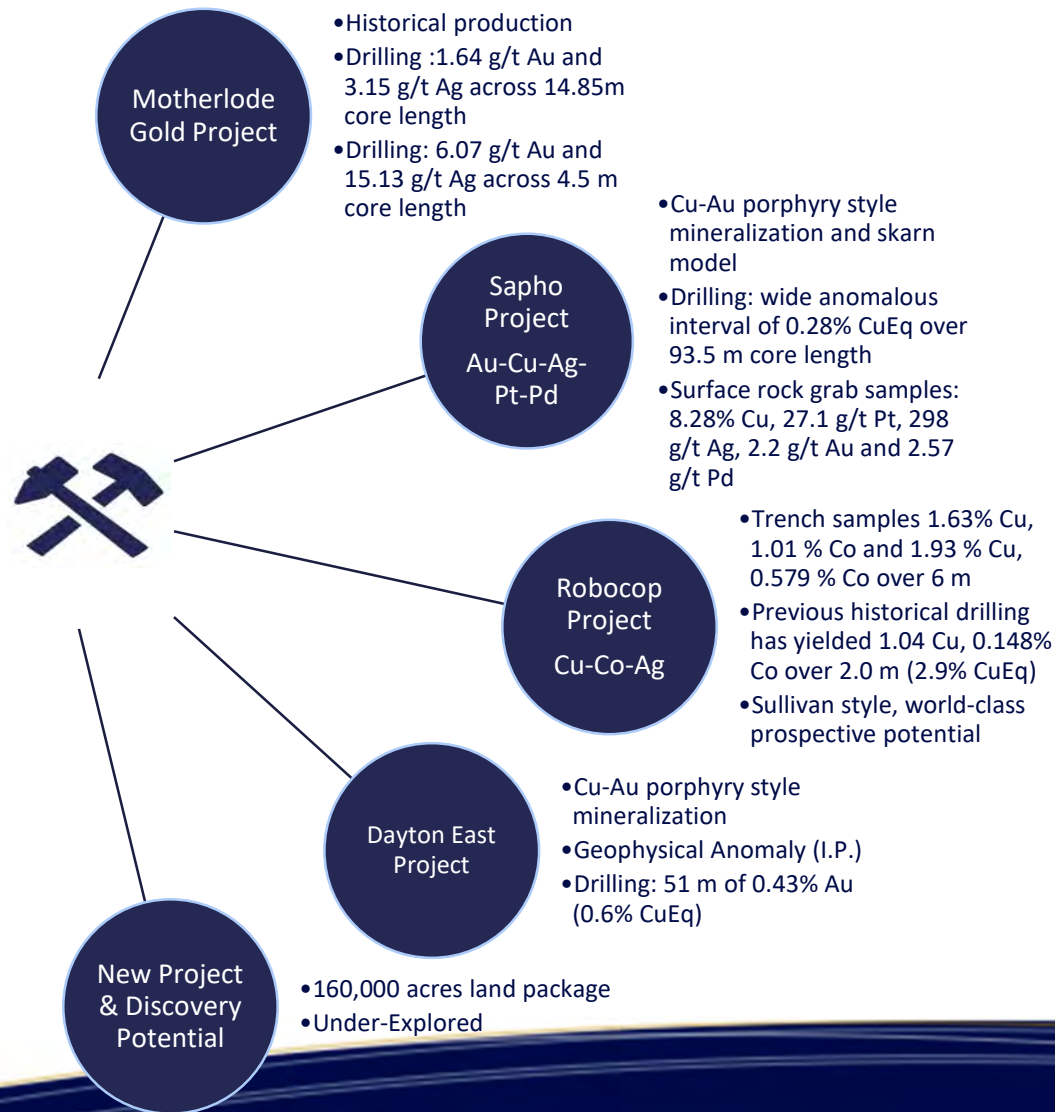


Initial production was severely hampered by the lack of an assay lab and gravity circuit at the mill



- Mill was constructed by Merit in 2008. Was in production in 2008 for almost a full year and quickly went out of production when the 2008 financial crisis hit. Has been on care and maintenance since.

Portfolio of Projects for Joint Venture



Source: M. Dufresne, A. Banas, K. Salter. "Assessment Report for the Robocop Property, South-Eastern British Columbia," APEX Geoscience Ltd. Edmonton, AB, Tech. Rep. March. 2013.

TSX.V : GZD

Grizzly Value Proposition & Catalysts for Growth



- **Q2, 2020 capital raise to prepare drill targets and launch Grizzly**
 - Up to \$500,000
 - Ground work and target preparation
- **Q3, 2020 capital raise for drilling**
 - 2,500 meter drill program
 - Geophysics
 - Mapping and soil sampling

CONTACT INFORMATION

BRIAN TESTO (CEO)

T: (780) 693-2242

E: info@grizzlydiscoveries.com

IAN LAMBERT (COO)

T: (604) 343-6122

E: ilambert@grizzlydiscoveries.com

**JIM GREIG,
CORPORATE
DEVELOPMENT**

T: (778) 788-2745

E: jgreig@grizzlydiscoveries.com

The time to buy Grizzly is now!

www.grizzlydiscoveries.com

TSX-V: GZD

FWB: G6H

OTCQB: GZDIF



APPENDIX

www.grizzlydiscoveries.com

TSX-V: GZD FWB: G6H OTCQB: GZDIF

Motherlode – Historical Exploration

Motherlode Intermittent Production Between 1900 and 1962			
	Gold	Silver	Copper
Metal Production	173,000 oz	688,000 oz	77 million lbs
Ore Grade	1.27 g/t	5.04 g/t	0.82%

- Motherlode was first staked and explored in 1891, with commercial production commencing in 1901
- The mine and smelter closed in 1919 due to decreasing ore grades
- Woodgreen Copper Mines Ltd. put the Motherlode Mine back in production in 1956 as an open pit operation, and operated the mine until 1962, at which time it was permanently closed
- Since the closure, Cumberland Mining, International Corona, Homestake and Veris have all explored the property to various degrees
- Grizzly Motherlode drilling produced:
 - 1.64 g/t Au and 3.15 g/t Ag across 14.85 m core length in hole 11ML05
 - 6.07 g/t Au and 15.13 g/t Ag across 4.5 m core length and hole 11M03 Including a higher-grade zone of 17.15 g/t Au and 41.7 g/t Ag across 1.5 m.
- The Motherlode North target warrants follow-up drilling
- Potential for a deeper target zone, below current drill intercepts

[illegible]

26

Geology & Deposits in Purcell Group

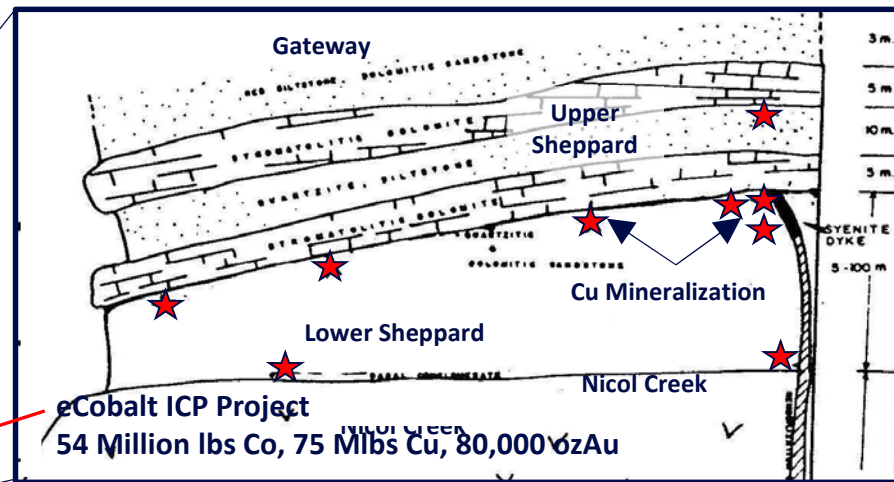
Table of Formations

	Nelson	Fernie	Montana	
Paleozoic	Hamill	Cranbrook		
Late Proterozoic	Horsthief Creek Toby			
Middle Proterozoic	Mt Nelsen		Garnet Range	Missoula
		Roosville	McNamara	
		Phillips	Bonner	
	Dutch Creek	Gateway Sheppard	Mt Shields Sheppard	
	Siyeh	Nicol Creek Van Creek	Purcell Lava Snow Slip	Wallace
	Kitchener	Kitchener	Helena Empire	
	Creston	Creston	St Revis Revett Burke	Ravalli
	Aldridge	Aldridge Fort Steele	Prichard	
	Moyie Sills			

★ Sullivan Pb-Zn Deposit

★ Cu Mineralization/Deposit

Robocop Stratigraphy

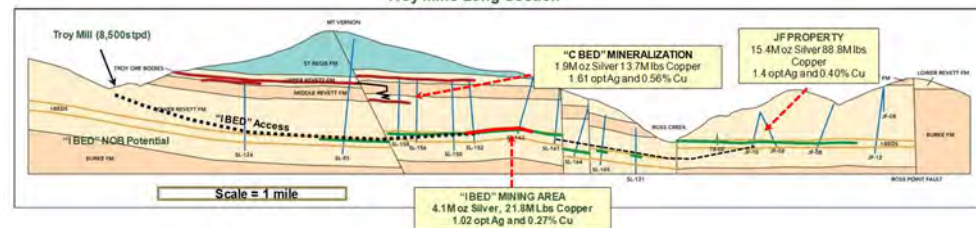


Structural & Stratigraphic Controlled Sediment Hosted Cu-Co-Ag

Troy, Mt = +1 million tons Cu, 150 Moz Ag @ 0.56% Cu & 1.32 oz/t Ag ¹

Rock Creek, Mt = 1 Million tons Cu, 230 Moz Ag @ 0.74% Cu & 1.67 oz/t Ag ²

Montanore, Mt = 760,000 tons Cu @ 0.7% and 183 Moz Ag at 1.6 oz/t Ag ³



Black Butte, Mt = 660,000 tons Cu, 20,250 tons Co, 8 Moz Ag @ 3.33% Cu, 0.1% Co & 0.4 oz/t Ag ⁴

Source: M. Dufresne, A. Banas, K. Salter. "Assessment Report for the Robocop Property, South-Eastern British Columbia," APEX Geoscience Ltd. Edmonton, AB, Tech. Rep. March. 2013.

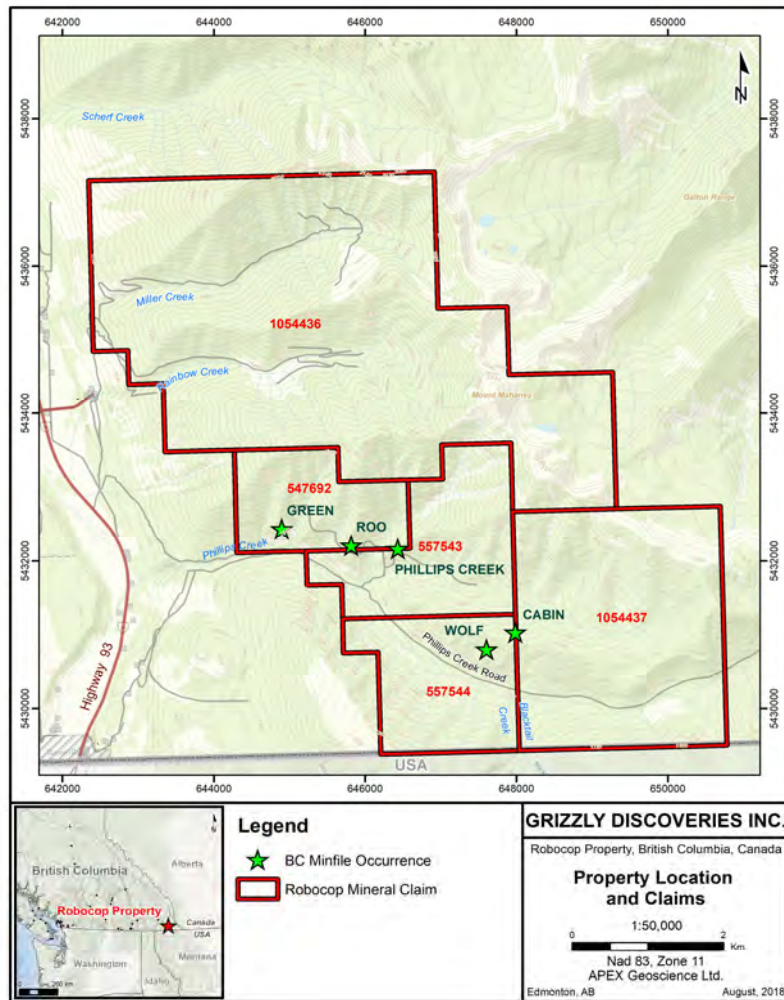
1. Troy produced 216,000 tons of Cu and 53 Moz Ag 1981-93, 2005-2014. Material from pillars and sub-economic underground mineralization remain in place - 800,000 tons Cu & 178 Moz Ag.

2. SRK, 2005 Independent Technical Report on the Rock Creek Cu-Ag Project, Montana

3. Revett Minerals, 2011. Montanore mineral resource of 760,000 tons of Cu (0.7%), 183 Moz Ag @ 1.6 oz/t (www.hecla-mining.com)

4. Winkers et al., 2013, "Updated technical report and preliminary economic assessment for the Black Butte Copper Project"

Robocop Property

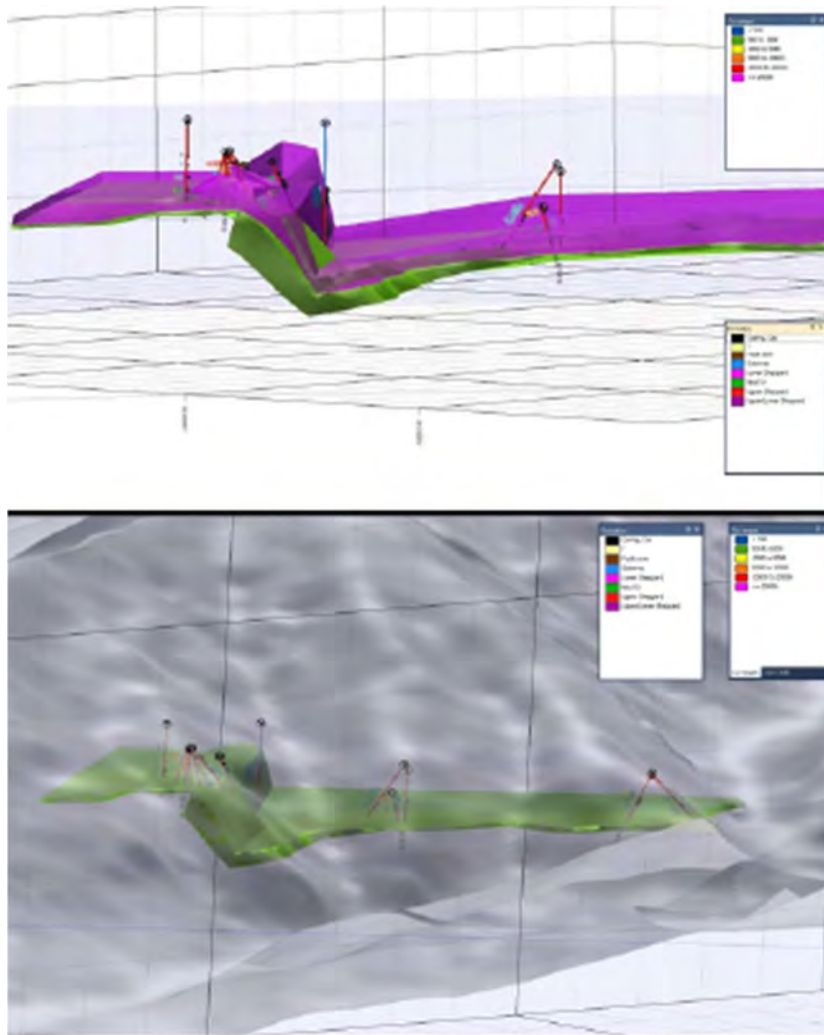


- Within the Fort Steele Mining District
- 100% owned 9,891 acres mineral claims
- Robocop can be worked 270 days/year
- Project has existing logging roads throughout the property
- 5 km from the highway 93/Power lines
- In existing mining region with over a 100-year history



Robocop Property

- Trench samples 1.63% Cu, 1.01 % Co and 1.93 % Cu, 0.579 % Co over 6 m
- Previous historical drilling has yielded 1.04 Cu, 0.148 % Co over 2.0 m (2.9% CuEq)
- Geological modelling using data from 15 historic drill holes and 325 samples returning Cu, Ag, Au, Co
- 2020 Work Program:
 1. 200 line km airborne survey
 2. soil sampling program
 3. 1,000 m diamond drill program



Micromine model of drilling showing vertical fault and east side down



Grizzly Discoveries Exploration Plans & Catalysts for Growth

- Focus on Precious Metal results
- Gold drill program of $\pm 2,500$ m at Ket 28 Project and Motherlode Project*
- Robocop Property plans airborne, sampling and up to $\pm 1,000$ m of diamond drilling*
- Opportunity to Joint Venture non-core projects

** Subject to financing*