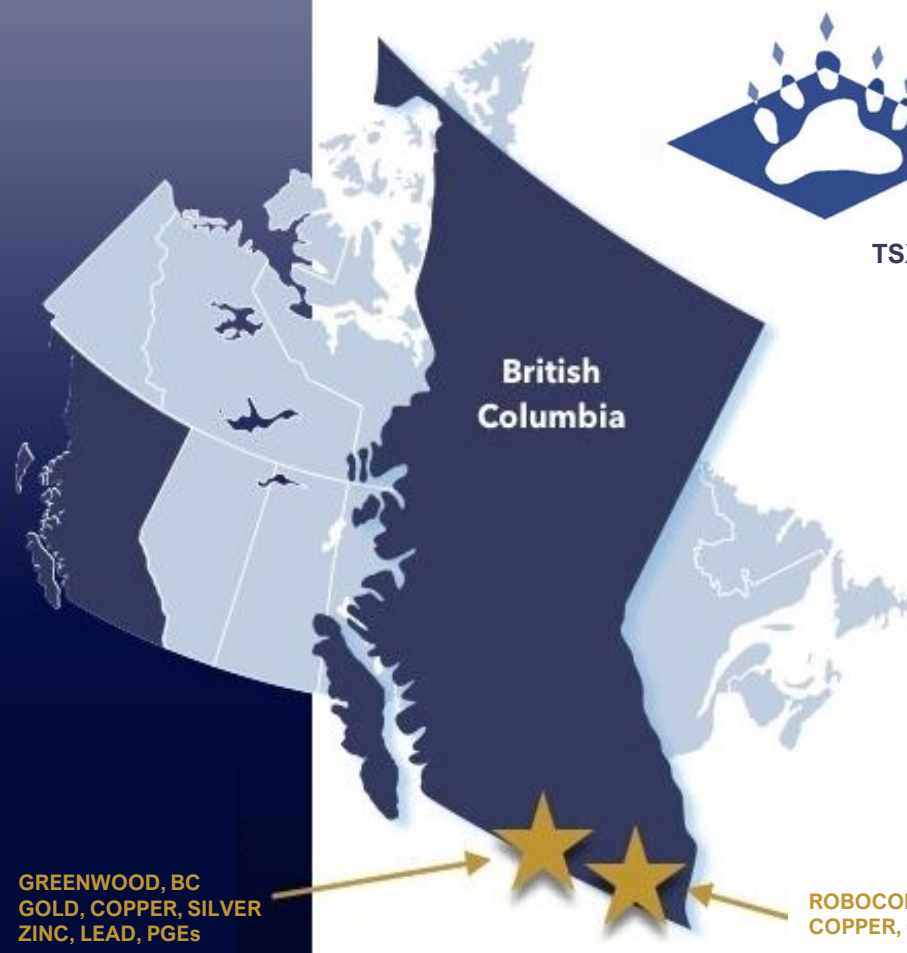




**GRIZZLY**  
DISCOVERIES INC.

TSX-V:GZD FWB:G6H OTCQB:GZDIF



**British  
Columbia**

**A Canadian  
Exploration  
Company with  
district scale  
mineral holdings in  
British Columbia,  
focused on copper,  
precious metals  
and cobalt.**

**GREENWOOD, BC  
GOLD, COPPER, SILVER  
ZINC, LEAD, PGEs**

**ROBOCOP, BC  
COPPER, COBALT, SILVER**

## **GRIZZLY DISCOVERIES**

- Exploration results returned Gold, Copper, Silver, Cobalt, Pt-Pd, Lead, and Zinc.
- Over 25% insider owned with a proven track record of success



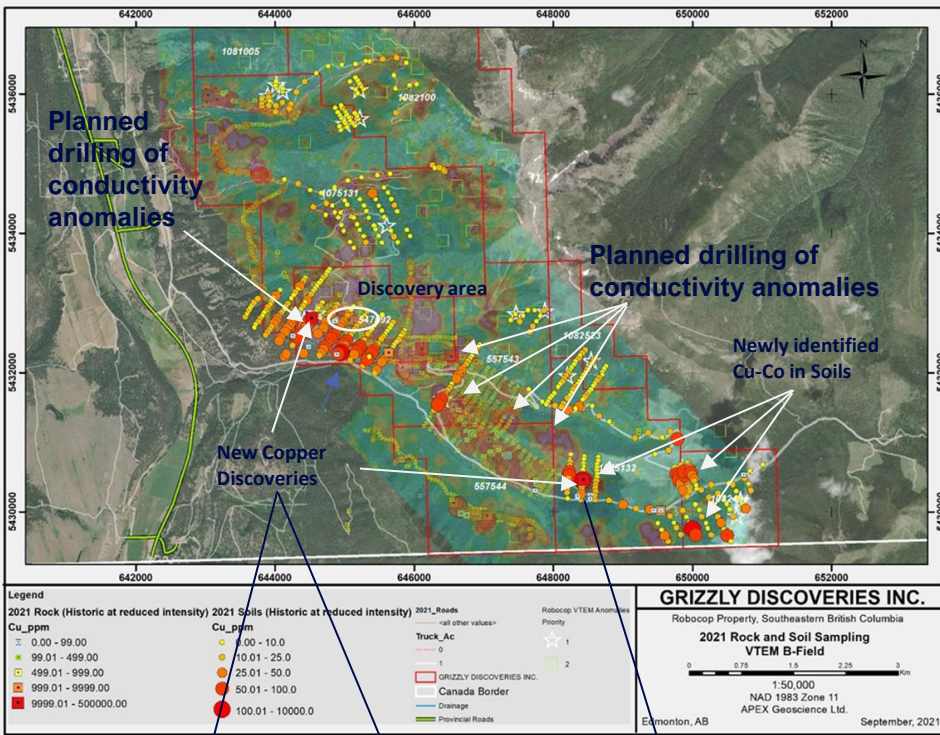
## **GREENWOOD PROPERTY, BC**

- 178,000 acres in Greenwood, BC
- Grizzly is the single largest mineral land holder in the Greenwood District
- Numerous historic mines located on the property and in the district with over 7M oz gold produced to date from the district
- Surrounds the Lexington and Gold Crown Mine Project
- GZD has spent >\$10M to date and discovered 7+ mineralized areas with near surface, high-grade open pit & underground potential
- 8 distinct projects within the land holding, Copper Mountain, Motherlode, Sappho, Ket 28, Granby River, Attwood & Overlander
- New additions of the historical mines at Midway, Imperial and Crown Silver
- Excellent prospects for gold, copper, silver, platinum, palladium, cobalt, zinc and lead
- Drilling Planned for 2025

TSXV: GZD | OTCQB:  
GZDIF | FWB: G6H



**GRIZZLY**  
DISCOVERIES INC.



- Fort Steele Mining District, accessed through extensive existing logging road network
- 5 km from the Highway 93, power lines & hydro power
- Region has a 100-year mining history
- Trench samples 1.63% Cu, 1,010ppm Co and 1.93% Cu, 579ppm Co over 6 m
- Previous historical drilling has yielded 1.04% Cu, 0.148% Co over 2.0m (2.9% CuEq)
- Geological modelling using data from 15 historic drill holes and 325 samples returning Cu, Ag, Au, Co



MANAGEMENT AND DIRECTORS		CORPORATE STRUCTURE (as at December 31, 2024)	
Brian Testo	CEO, President, Director	Shares Outstanding	159,527,287
Jeremy Strautman	CFO	Fully Diluted	184,214,884
Dr. Solomon Pillersdorf	Director	Market Capitalization	\$3.2M
Jim Greig, MBA	Director		
Jo Price, M.Sc., MBA, P.Geo	Director	<b>CONTACT</b>	
Nancy Massicotte	Corporate Development	Nancy Massicotte	
Michael Dufresne	Lead Technical Consultant	<a href="mailto:nancy@grizzlydiscoveries.com">nancy@grizzlydiscoveries.com</a>	