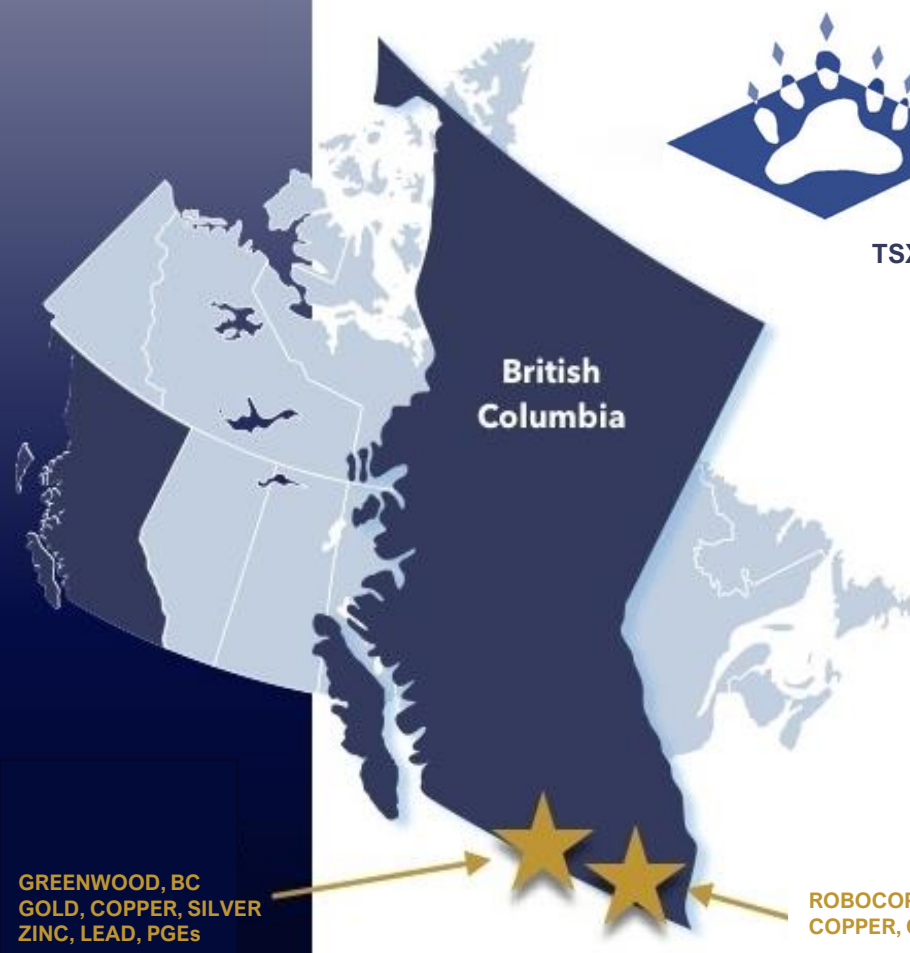




GRIZZLY
DISCOVERIES INC.

TSX-V:GZD FWB:G6H OTCQB:GZDIF



**British
Columbia**

**A Canadian
Exploration
Company with
district scale
mineral holdings in
British Columbia,
focused on copper,
precious metals
and cobalt.**

**GREENWOOD, BC
GOLD, COPPER, SILVER
ZINC, LEAD, PGEs**

**ROBOCOP, BC
COPPER, COBALT, SILVER**

GRIZZLY DISCOVERIES

- Exploration results returned Gold, Copper, Silver, Cobalt, Pt-Pd, Lead, and Zinc.
- Over 25% insider owned with a proven track record of success



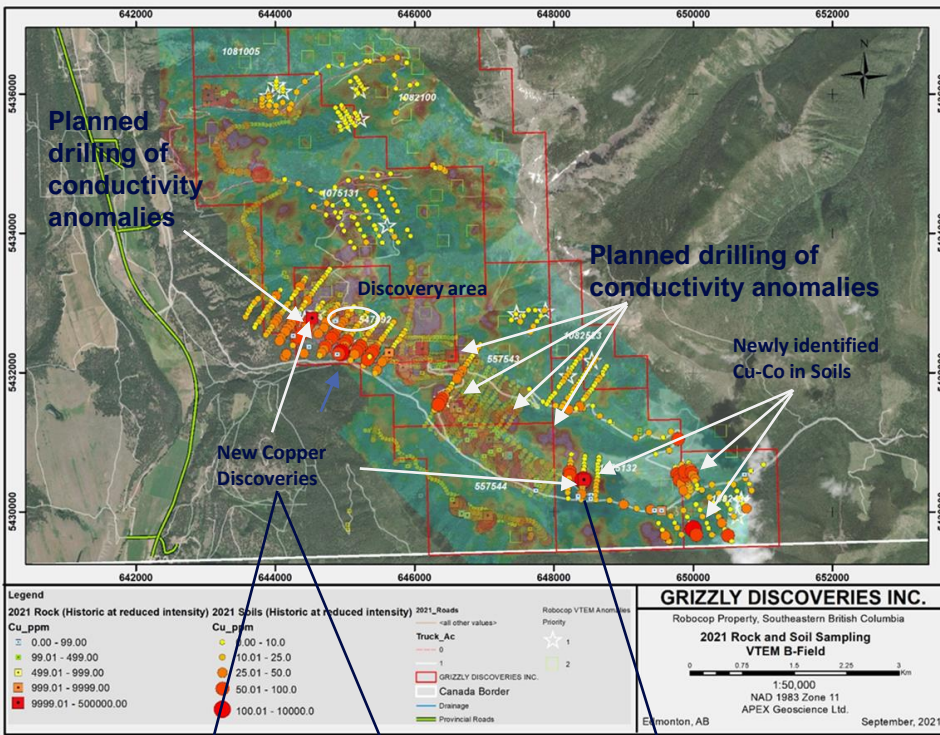
GREENWOOD PROPERTY, BC

- 160,000 acres in Greenwood, BC
- Grizzly is the single largest mineral land holder in the Greenwood District
- Numerous historic mines located on the property and in the district with over 7M oz gold produced to date from the district
- Surrounds the Lexington and Gold Crown Mine Project
- GZD has spent >\$10M to date and discovered 7+ mineralized areas with near surface, high-grade open pit & underground potential
- 8 distinct projects within the land holding, Ket 28 optioned, Dayton, Copper Mountain, Motherlode, Sappho, Granby River, Attwood & Overlander
- New additions of the historical mines at Midway, Imperial and Crown Silver
- Excellent prospects for gold, copper, silver, platinum, palladium, cobalt, zinc and lead
- Drilling Planned for 2023

TSXV: GZD | OTCQB:
GZDIF | FWB: G6H



GRIZZLY
DISCOVERIES INC.



- Fort Steele Mining District, accessed through extensive existing logging road network
- 5 km from the Highway 93, power lines & hydro power
- Region has a 100-year mining history
- Trench samples 1.63% Cu, 1,010ppm Co and 1.93% Cu, 579ppm Co over 6 m
- Previous historical drilling has yielded 1.04% Cu, 0.148% Co over 2.0m (2.9% CuEq)
- Geological modelling using data from 15 historic drill holes and 325 samples returning Cu, Ag, Au, Co
- Drill Permits Expected 2023



MANAGEMENT AND DIRECTORS		CORPORATE STRUCTURE (as at Oct 31 st 2022)	
Brian Testo	CEO, President, Director	Shares Outstanding	139,926, 427
Jeremy Strautman	CFO	Fully Diluted	172,059,856
Dr. Solomon Pillersdorf	Director	Market Capitalization	\$13M
Jim Greig, MBA	Director	Working Capital	CDN \$1.2M
Jo Price, M.Sc., MBA, P.Geo	Director	CONTACT	
Nancy Massicotte	Corporate Development	Nancy Massicotte	
Michael Dufresne	Lead Technical Consultant	nancy@grizzlydiscoveries.com	

