



# Grizzly Discoveries Inc.

## A Canadian Exploration Company

**Base (Battery) & Precious Metals in British Columbia, Canada**

May 2023

Michael Dufresne, M.Sc., P.Geol., P.Geo., President APEX Geoscience Ltd.

# Forward Looking Statements



- This presentation contains certain “forward-looking statements”. Such forward-looking statements include, without limitation:
  - estimates of future capital expenditures;
  - estimates of resources and statements regarding future exploration results, timing and amount of estimated future exploration
  - success of exploration, development and production activities.
  - expenditures; permitting; and requirements for additional capital and access to data.
- Where the Company expresses or implies an expectation or belief as to future events or results, such expectation or belief is expressed in good faith and believed to have a reasonable basis. However, forward-looking statements are subject to risks, uncertainties and other factors, which could cause actual results to differ materially from future results expressed, projected or implied by such forward looking statements. Such risks include, but are not limited to metals price volatility, currency fluctuations, increased production costs and variances in ore grade or recovery rates from those assumed in mining plans, as well as political and operational risks in the countries and states in which we operate or sell product to, and governmental regulation and judicial outcomes.
- The Company does not undertake any obligation to release publicly any revisions to any “forward looking statement” to reflect events or circumstances after the date of this presentation, or to reflect the occurrence of unanticipated events, except as may be required under applicable securities laws. The following presentation does not constitute an offer to sell or solicitation of an offer to buy any securities of Grizzly Discoveries Inc.
- In addition, certain information provided in this presentation has been taken from 3rd party sources and 3rd party reports and/or presentations and has not been independently verified by the company. Readers are cautioned not to place undue reliance on such information.

# Grizzly Canadian Projects



**GREENWOOD PROJECTS**  
Gold, Copper, Silver

**ROBOCOP PROJECT**  
Copper, Cobalt, Silver

Precious Metal & Battery Metal properties  
Covering 170,000 acres

Focus Greenwood Project, Motherlode &  
Dayton Cu-Co-Au-Ag, Midway Ag-Au,  
Imperial Ag-Au, Sappho Cu-Au-Ag-PGEs,  
Copper Mt Cu-Au; Robocop Cu-Co-Ag

Active exploration programs in 2022 including  
drilling & groundwork; ~\$1+ million expended

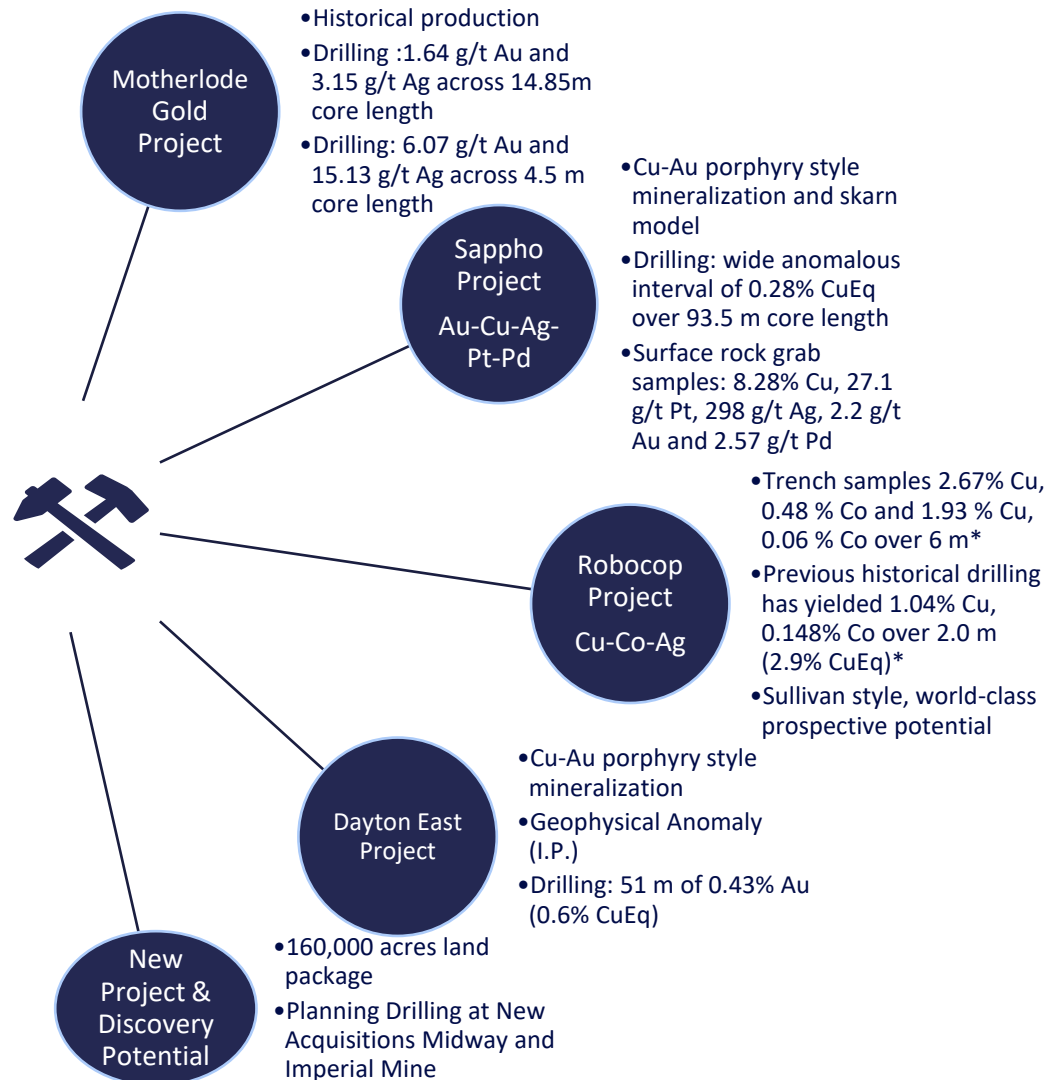
Proven, prolific and historic mining jurisdiction

Full road access with logistical advantages

First Nations – Supportive & Active Partner

Planning for Aggressive Exploration Program  
in 2023 - \$1.5 to \$2.0 Million

# Portfolio of Projects for Exploration and Joint Venture



# GREENWOOD POTENTIAL FOR BATTERY & PRECIOUS METALS

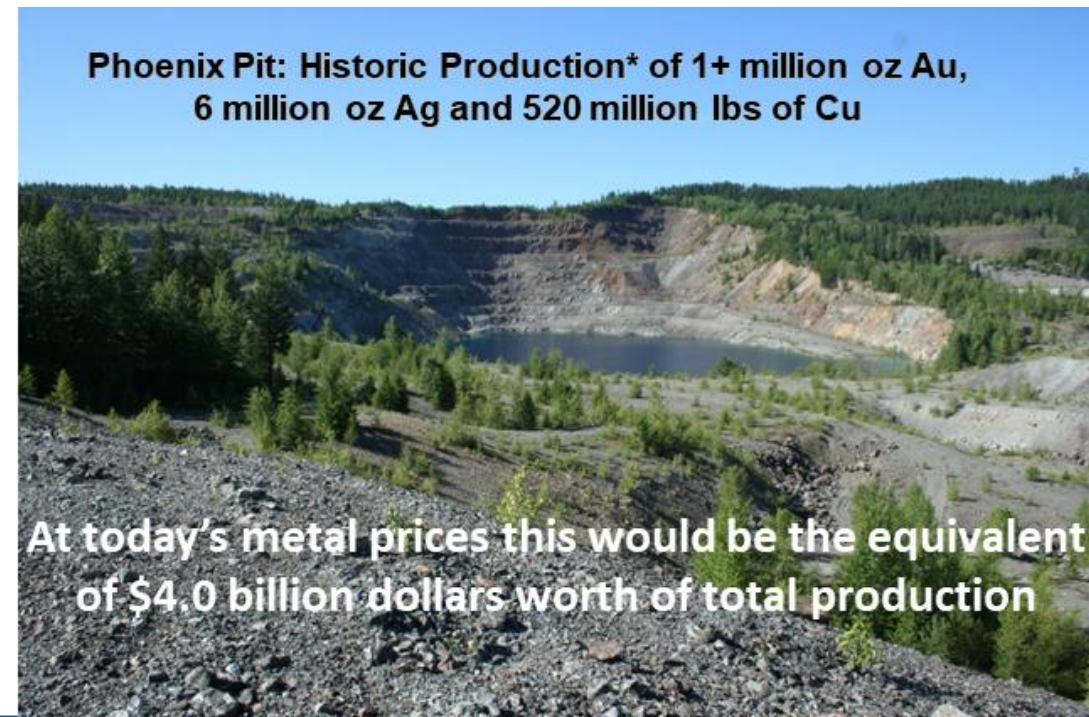




# Deposit Types & Conceptual Targets (Battery & Precious Metals)



- **Cu-Au-Ag or Au-Ag Skarns** – Intermediate to large tonnage targets, low grades to high grades ie Phoenix 27 Mt @ 1% Cu & 1 g/t Au (a \$4.0 billion dollar target) and Motherlode 4.2 Mt @ 0.82% Cu, 1.27 g/t Au & 5 g/t Ag (a \$0.5 to 1.0 billion target); GZD targeting Motherlode and Motherlode North
- **Epithermal Au-Ag Veins** - High grade, small to intermediate tonnage targets ie Knob Hill (2 million oz Au @ 20 g/t, Golden Promise 500,000 oz Au @ 24 g/t, Kettle River, Emmanuel Creek, K2; also low grade bulk tonnage ie Golden Eagle 33 Mt @ 2 g/t Au (\$2.5 billion dollar target) – Golden Crown Greenwood
- **Au-Cu-Ag Sulphide Bodies** - Rossland type (mesothermal) veins/bodies (VMS? bodies) high grade small tonnage - Lamefoot, Wild Rose, Lexington, Sylvestor K
- **Cu-Au-Ag ± PGE's in Mesozoic Alkalic Porphyry's** – low grade and very large bulk tonnage targets – GZD targeting Dayton & Sappho; Dayton DDH returned 0.4% CuEq\*\* over 51 m and a Sappho DDH returned 0.38% CuEq\*\* over 63.5 m both near surface intersections



**Phoenix Pit: Historic Production\* of 1+ million oz Au, 6 million oz Ag and 520 million lbs of Cu**

**At today's metal prices this would be the equivalent of \$4.0 billion dollars worth of total production**

\*Production report from BCMEMPR Minfile Report; The past production has not been verified by the Company

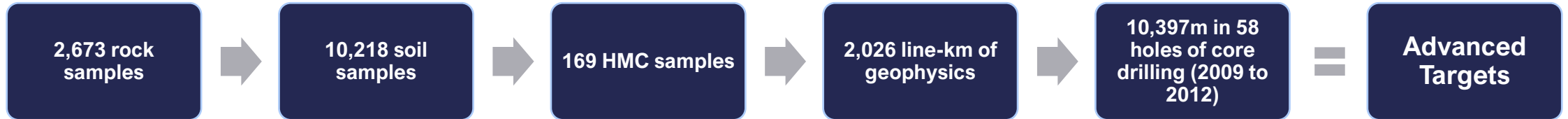
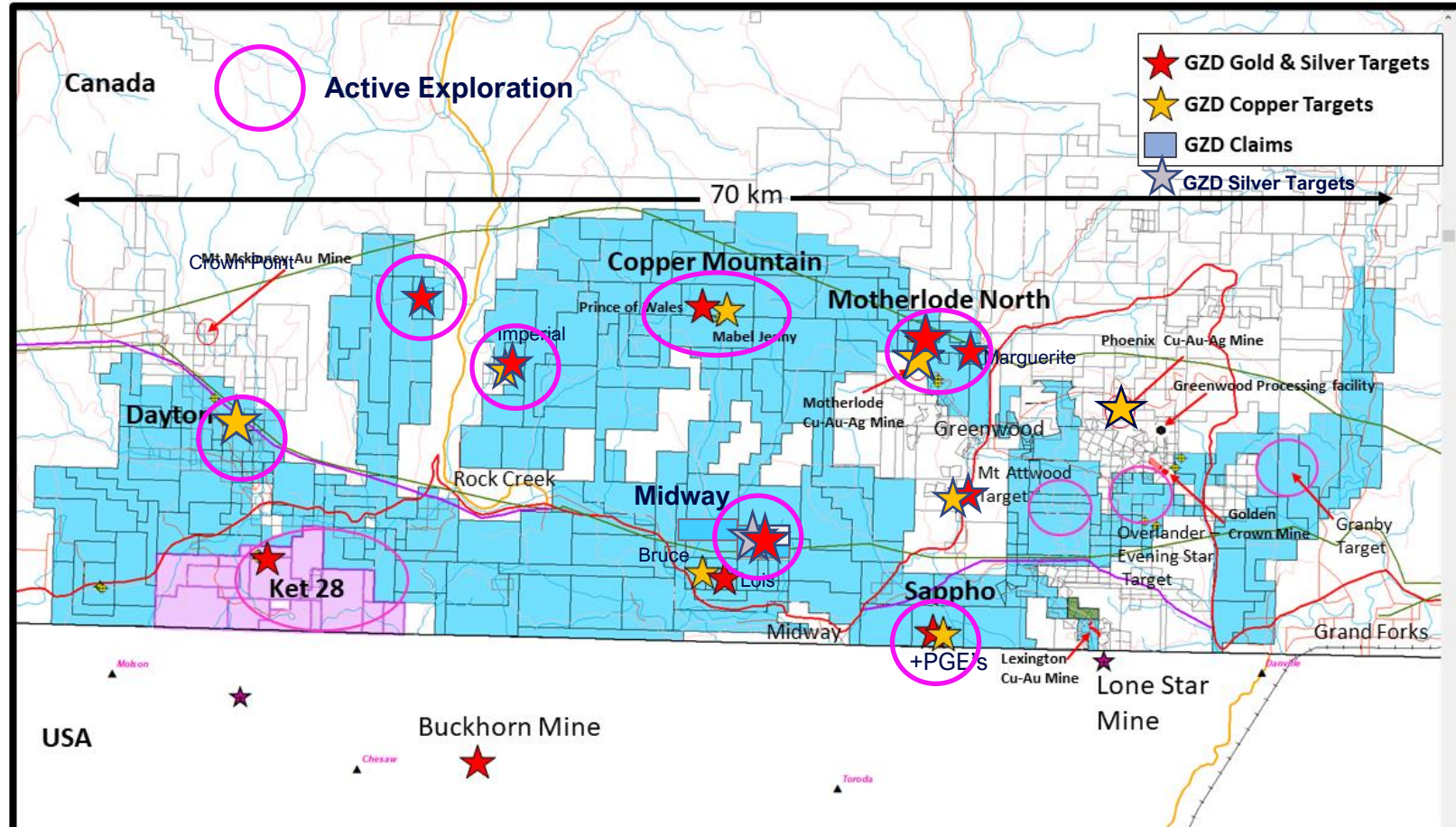
\*\* Cu Eq calculated using \$1800/oz Au, \$25/oz Ag and \$4.50/lb Cu, \$1000/oz Pt, \$1800/oz Pd

# Greenwood Claim Groups



## Grizzly 2021 - 2022 Exploration

- Restarted Exploration on all fronts
- Additional 2,000 Soil Samples
- Additional 1,000 Rock Samples
- Additional 200 In-km of Ground Geophysics - Magnetic and EM Loupe Surveys
- Total 15 Core Holes and 3,100 m
- Results Received now for 4 Dayton core holes, and the 11 Motherlode drill holes.
- Results Received for all Rock and Soil Samples

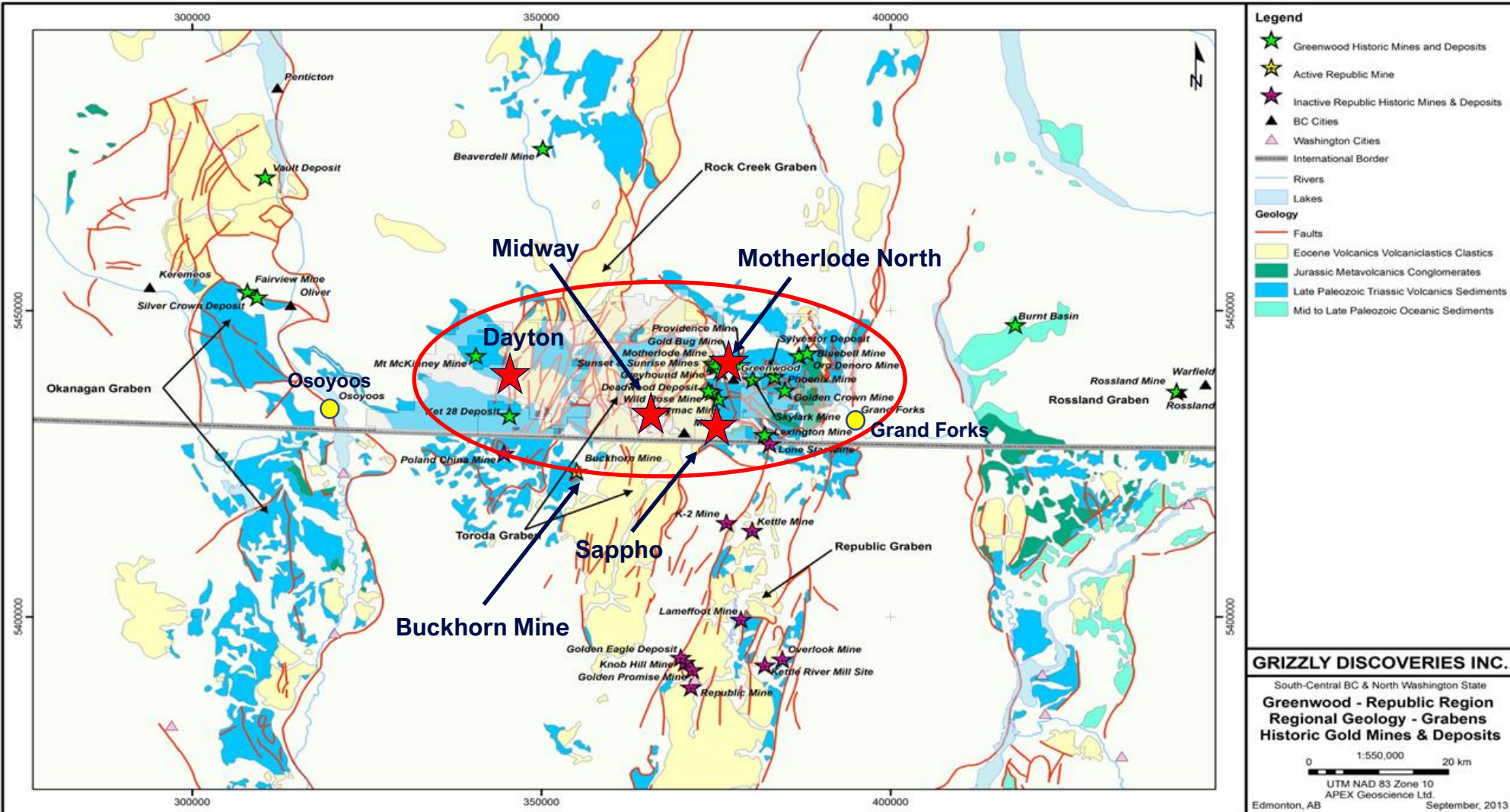






# Paleozoic Grabens – Good Setting for Skarn, Porphyry’s & Epithermal Systems

- Fault bounded Tertiary grabens bordered by high grade metamorphic terranes
- Cored by West edge NA Paleozoic to Triassic volcanics (basalt) & sediments (in blues)
- intruded by 4 ages of intrusives; Triassic, Jurassic, Cretaceous and Tertiary - overlain & cut by Tertiary volcanics (in yellow)



**Motherlode North – East Side of the Toroda Graben**

**Maybe More Accurately Tertiary Grabens with Exposed Core Paleozoic – Triassic Rocks**

# Motherlode/Motherlode North – Historical Exploration

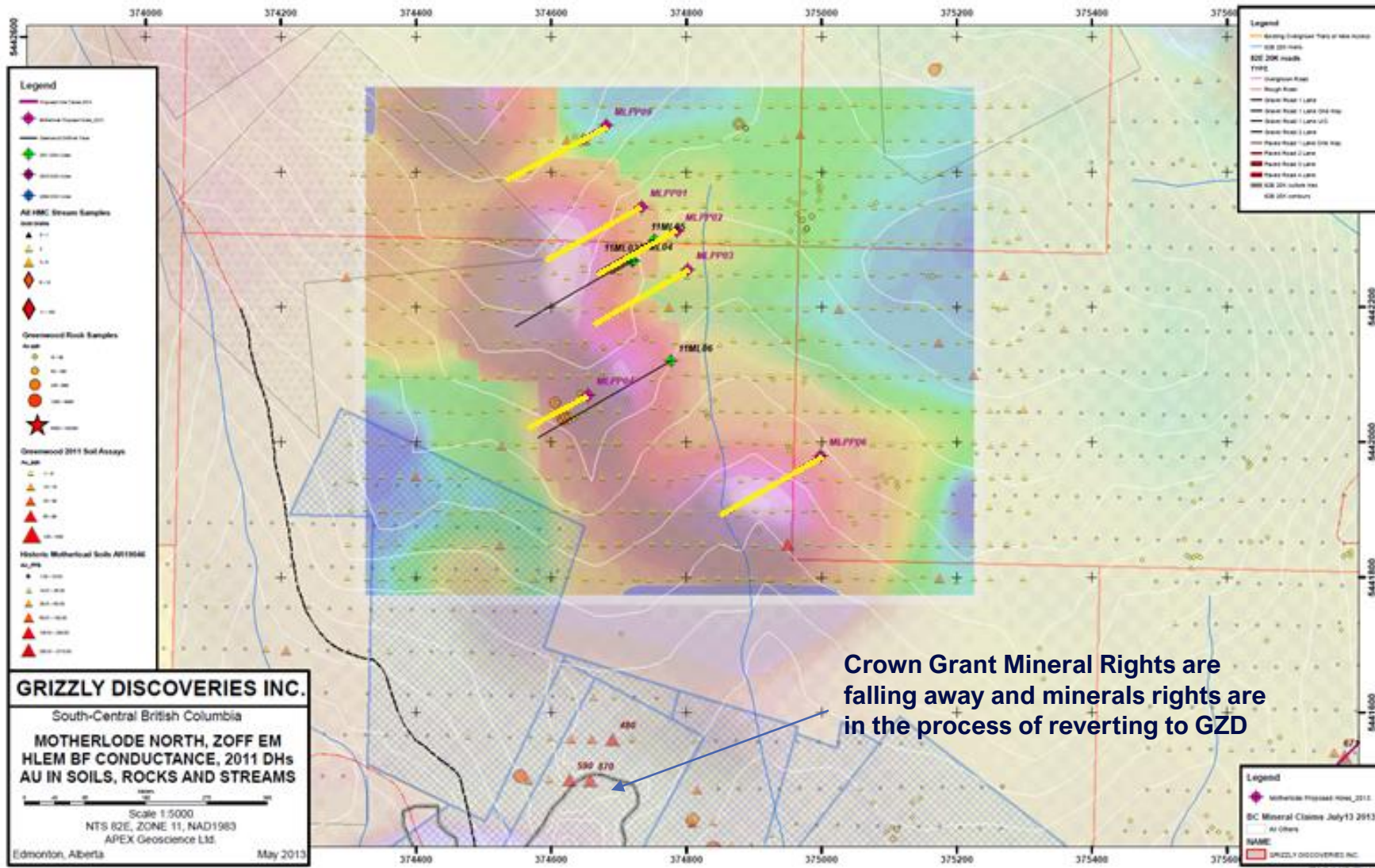


- Motherlode was first staked and explored in 1891, with commercial production commencing in 1901
- The mine and smelter closed in 1919 due to decreasing ore grades
- Woodgreen Copper Mines Ltd. put the Motherlode Mine back in production in 1956 as an open pit operation, and operated the mine until 1962, at which time it was permanently closed
- Since the closure, Cumberland Mining, International Corona, Homestake and Veris Gold have all explored the property to various degrees but with nothing substantial since the 1990's
- Grizzly Motherlode drilling produced:
  - 1.64 g/t Au & 3.15 g/t Ag across 14.85 m core length in hole 11ML05
  - 6.07 g/t Au & 15.13 g/t Ag across 4.5 m core length in hole 11M03 Including a higher-grade zone of 17.15 g/t Au & 41.7 g/t Ag across 1.5 m
- The Motherlode North target warrants follow-up drilling
- Potential for a deeper target zone, below current drill intercepts



Motherlode Intermittent Production Between 1900 and 1962			
4.7 Million Tons	Gold	Silver	Copper
Metal Production	173,000 oz	688,000 oz	77 million lbs
Ore Grade	1.27 g/t	5.04 g/t	0.82%

# Proposed Motherlode/Motherlode North Drill Program

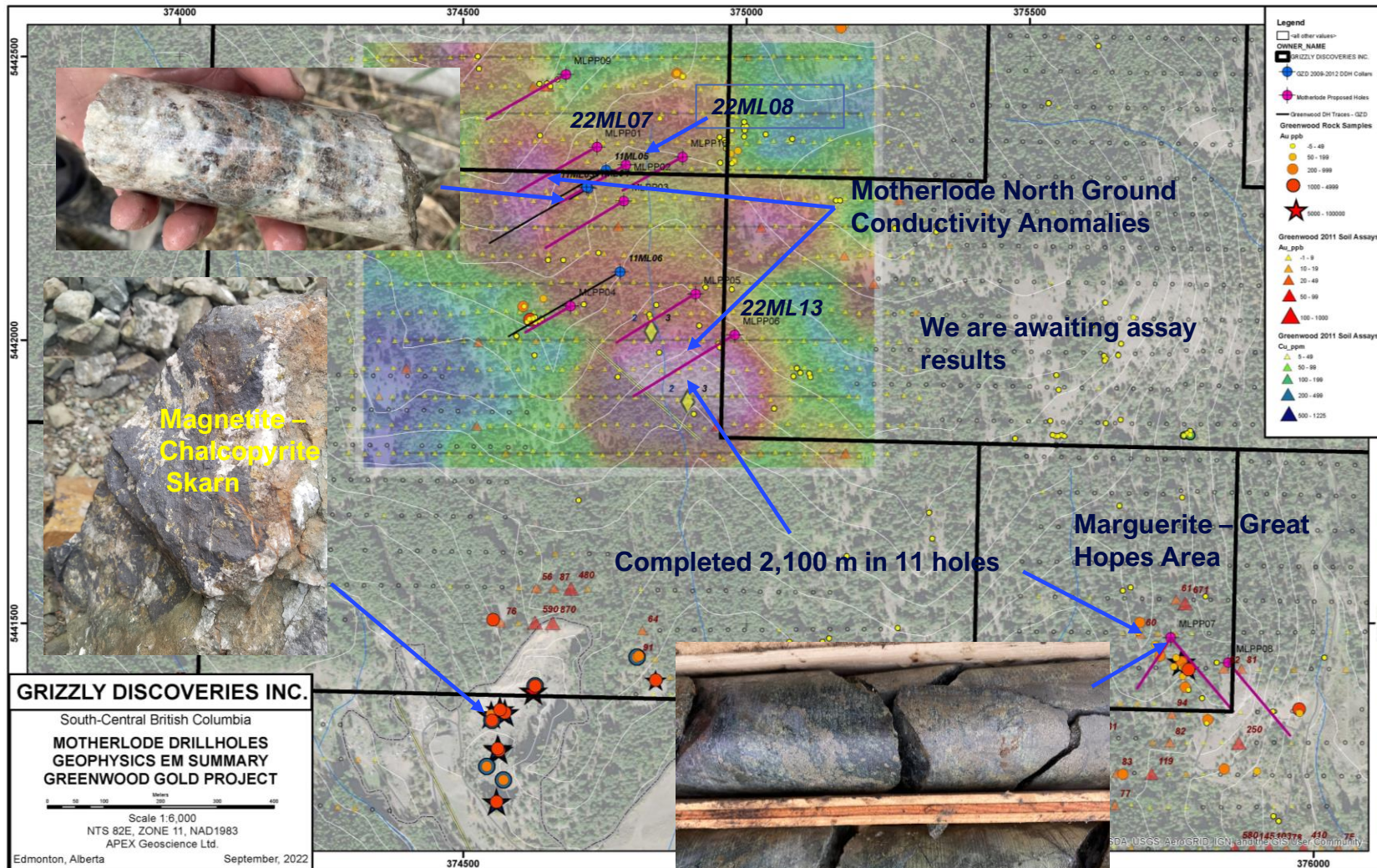


Magnetite - Chalcopyrite Skarn

Crown Grant Mineral Rights are falling away and minerals rights are in the process of reverting to GZD

FIGURE 10

# Motherlode North & Marguerite 2022 Drill Program



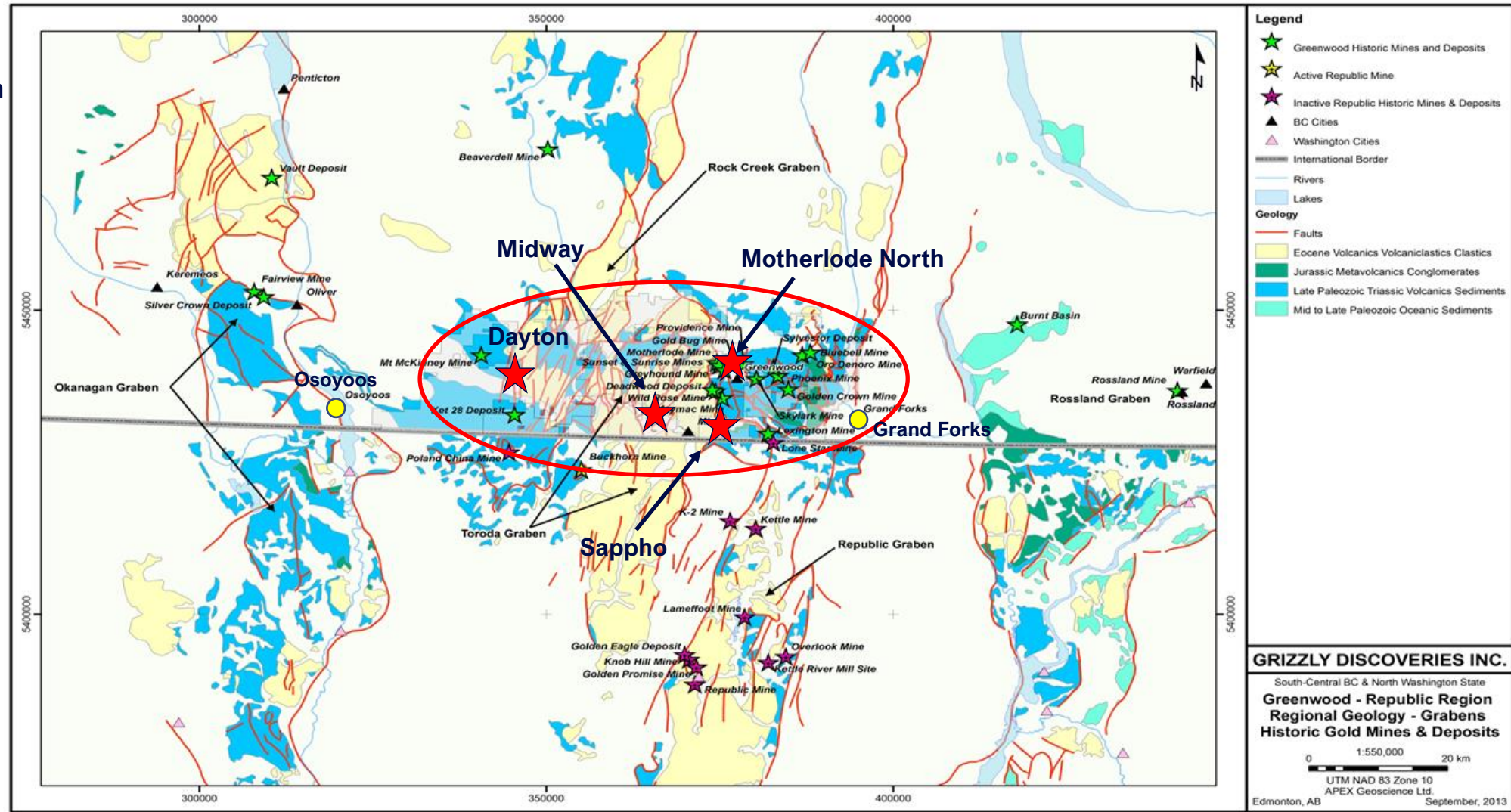
Hole ID	From m	To m	Length m	Au g/t	Ag g/t	Cu%	Pb%	Zn%
11ML03*	7.00	26.00	19.00	1.559	11.12	0.035	0.069	0.303
includes	11.00	15.50	4.50	6.069	15.13	0.028	0.196	0.669
11ML04*	8.95	24.00	15.05	0.473	1.43	0.020	0.010	0.154
includes	8.95	15.00	6.05	0.979	2.53	0.034	0.023	0.296
11ML05*	24.50	53.00	28.50	0.88	1.90	0.010	0.020	0.250
includes	27.50	42.35	14.85	1.643	3.15	0.012	0.035	0.465
includes	39.50	42.35	2.85	4.114	6.88	0.037	0.031	1.036
22ML07	92.00	109.56	17.56	0.415	2.19	0.019		0.080
includes	99.00	104.00	5.00	1.307	3.10	0.034		0.191
includes	103.00	104.00	1.00	5.86	6.30	0.041		0.516
22ML08	38.00	49.09	11.09	0.108	2.43	0.013		0.059
and	52.46	53.00	0.54	2.12	5.20	0.075	0.014	0.957
22ML09	54.53	60.00	5.47		4.67			0.015
and	102.00	123.00	21.00		4.01			0.014
includes	117.00	123.00	6.00		4.83	0.012		0.017
22ML12	47.00	60.00	13.00	0.023	1.10	0.015		0.018
22ML13	11.17	22.00	10.83	0.049	4.44	0.012		0.029
and	73.00	88.00	15.00	0.332	2.63		0.010	0.053
includes	73.00	78.57	5.57	0.58	3.09			0.088
22MR01	5.31	10.63	5.32	0.442	5.61	0.028		
and	34.00	37.10	3.10	0.091	6.21	0.037		
and	97.00	216.00	119.00	Total of 80 of 116 samples >100 ppm Cu up to 1,600 ppm Cu				
and	97.00	216.00	119.00	Total of 49 of 116 samples >200 ppm Cu up to 1,600 ppm Cu				
includes	166.00	184.75	18.75	0.065	3.34	0.062		
includes	176.00	184.75	8.75	0.101	3.82	0.090		
22MR02	70.00	79.50	9.50	0.227	4.36	0.037		0.013
includes	76.91	79.50	2.59	0.602	9.11	0.076		
and	123.00	169.00	46.00	0.051	1.59	0.047		
and	123.00	169.00	46.00	Total of 41 of 45 samples >100 ppm Cu up to 1,980 ppm Cu				
and	123.00	169.00	46.00	Total of 35 of 45 samples >200 ppm Cu up to 1,980 ppm Cu				
includes	129.00	137.00	8.00	0.123	2.06	0.127		

\*2011 core holes with results previously released. All hole lengths are core length, true thickness is unknown at this stage of exploration

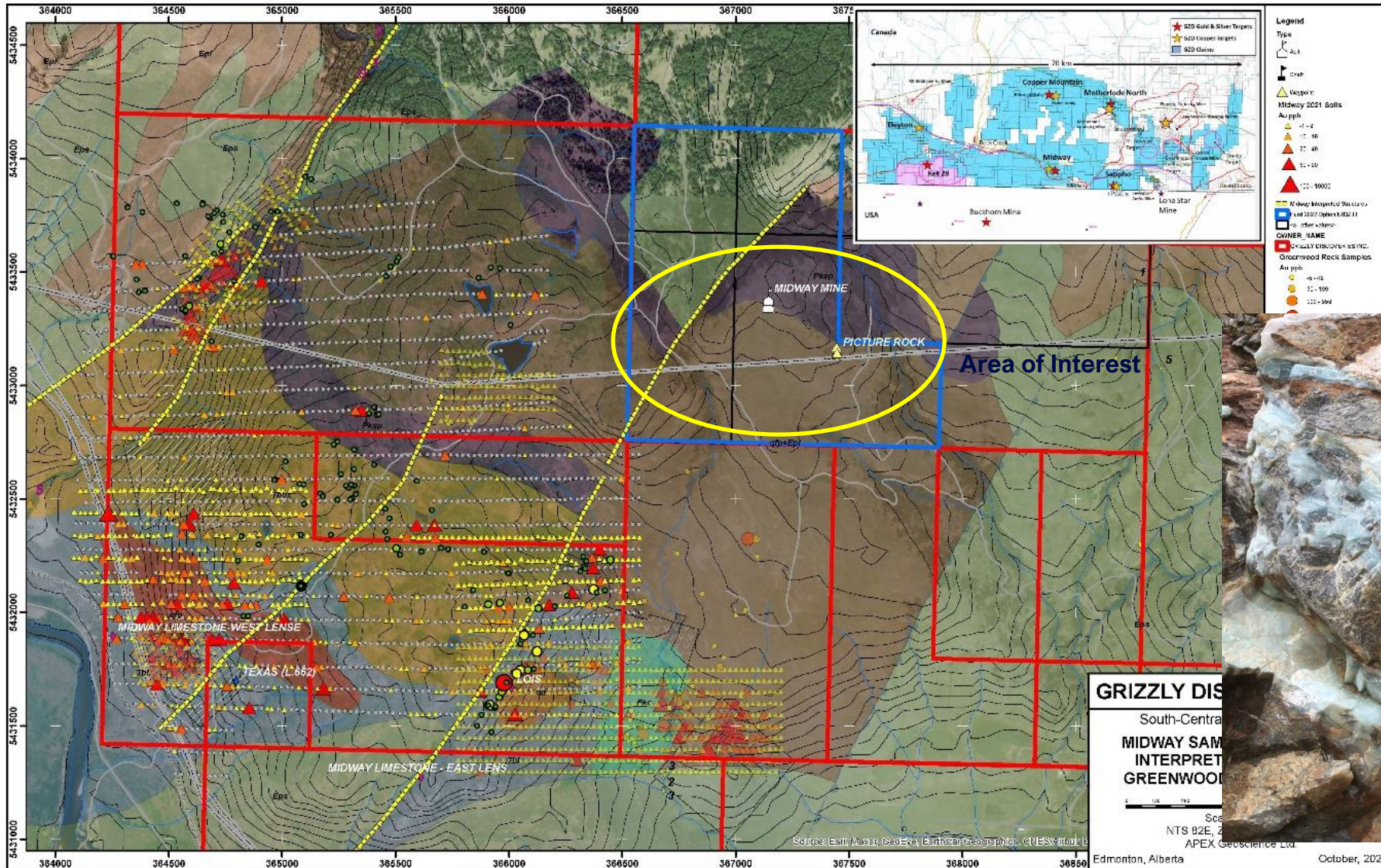


# Tertiary Grabens – Midway Window Through Tertiary Graben Material

- Fault bounded Tertiary grabens bordered by high grade metamorphic terranes
- Cored by west edge NA Paleozoic to Triassic volcanics (basalt) & sediments (in blues)
- intruded by 4 ages of intrusives; Triassic, Jurassic, Cretaceous and Tertiary - overlain & cut by Tertiary volcanics (in yellow)

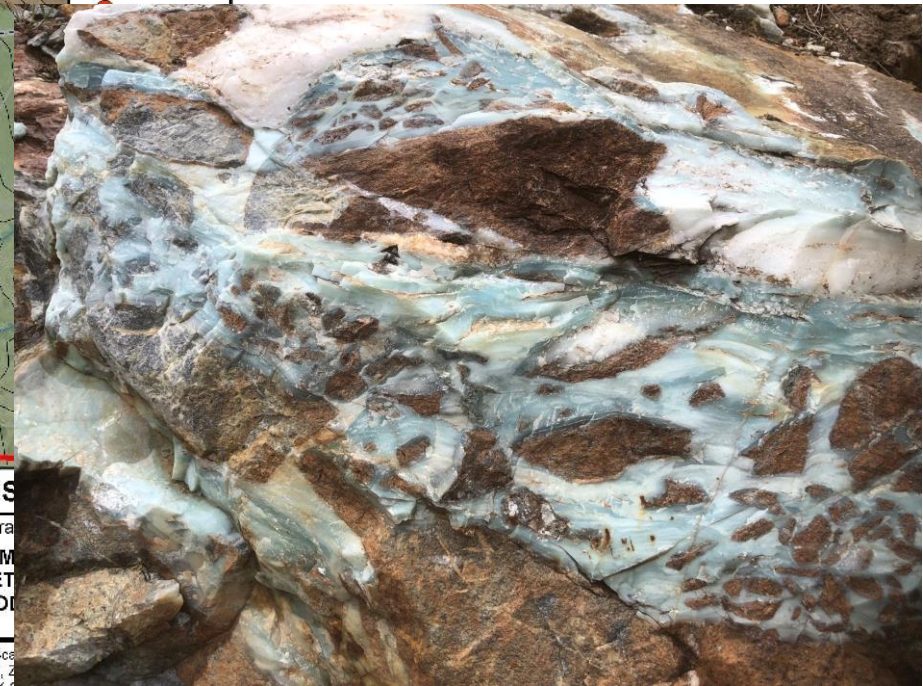


# Midway Mine – Dan Hurd Option



## Sampling and Ground Geophysical Surveys

Option to Purchase Mineral Rights from Dan Hurd – He keeps the Picturestone or Picture Rock Quarriable Rock rights



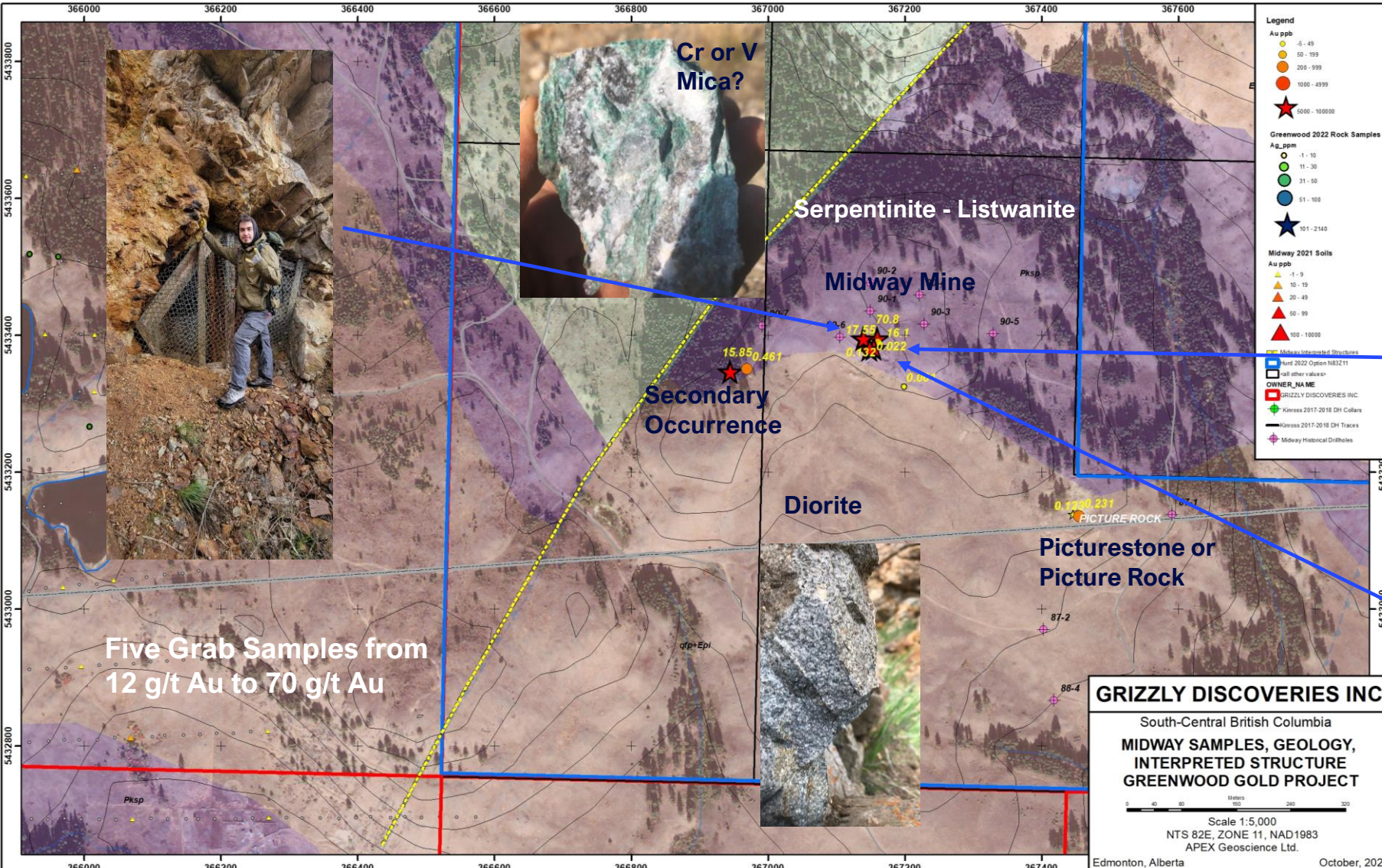
# Midway Mine 2022 Exploration – Dan Hurd Option



**Gold Samples  
Backdrop of Geology  
Produced Ag-Au from 3 levels and  
small pit in the 1980s era**



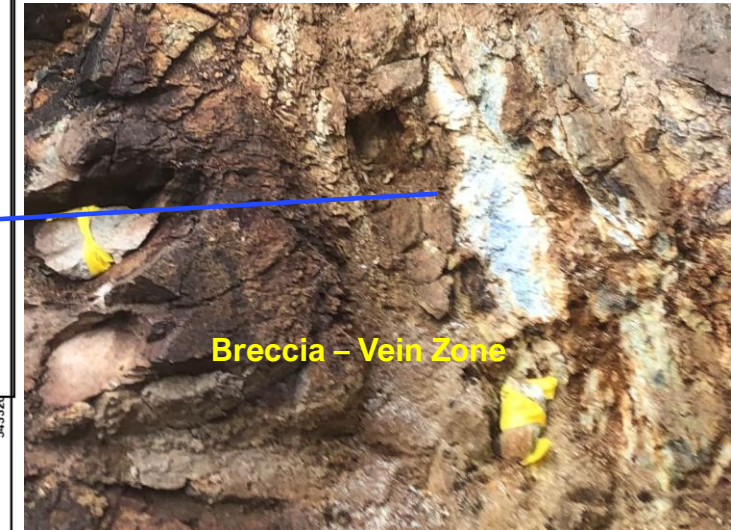
**Massive sulphide – pyrite, arsenopyrite,  
galena, sphalerite, stibnite, electrum etc**



# Midway Mine 2022 Exploration – Dan Hurd Option



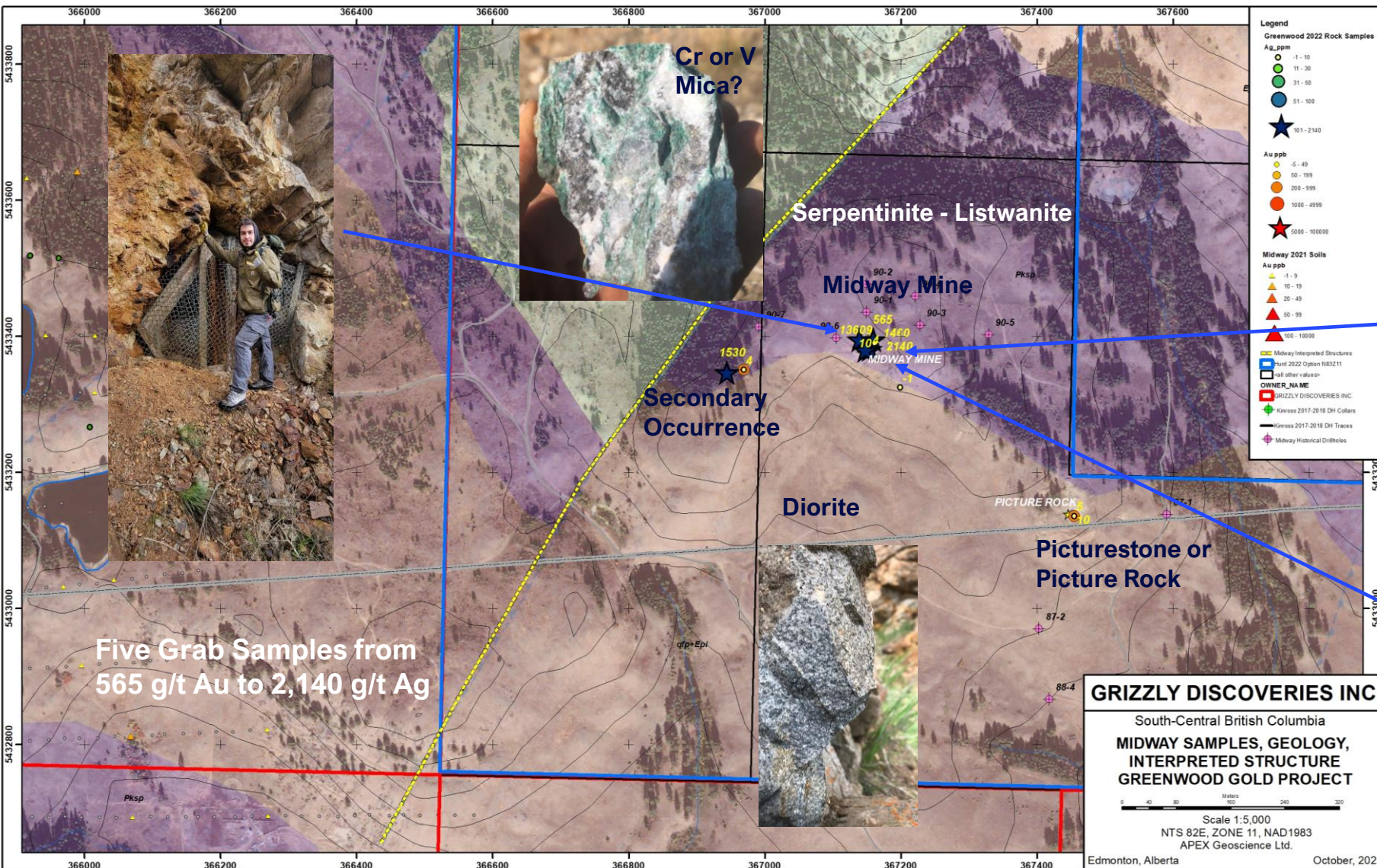
## Silver Samples Backdrop of Geology



Breccia – Vein Zone



Massive sulphide – pyrite, arsenopyrite, galena, sphalerite, stibnite, electrum etc





# Midway Mine 2022 Exploration – Sample Results



**Table 1: Selected geochemical highlights for 12 rock grab samples\* collected in the Midway Mine area.**

Sample	Target	Au g/T	Au oz/t	Ag g/T	Ag oz/t	As ppm	Cu ppm	Pb ppm	Sb ppm	Zn ppm
22SLP001	Midway Mine	0.185	0.005	8.6	0.3	740	11	146	10	395
22SLP002	Midway Mine	12.05	0.351	2,140.0	62.4	>10,000	1470	41,400	1,870	33,300
22SLP003	Midway Mine	0.132	0.004	9.7	0.3	66	9	121	13	127
22SLP004	Midway Mine	0.022	0.001	3.9	0.1	51	24	41	8	1,925
22SLP005	Midway Mine	16.1	0.470	1,460.0	42.6	>10,000	345	11,100	1,095	2,290
22SLP006	Midway Mine	70.8	2.065	565.0	16.5	9970	202	62,500	404	1,610
22SLP007	Midway Mine	17.55	0.512	1,360.0	39.7	>10,000	993	41,700	1,155	43,400
22SLP008	Picturestone	0.123	0.004	10.0	0.3	458	17	141	113	130
22SLP009	Picturestone	0.231	0.007	4.7	0.1	268	4	221	51	53
22SLP011	Midway West Ridge	15.85	0.462	1,530.0	44.6	>10,000	591	10,550	932	19,900
22SLP012	Midway West Ridge	0.461	0.013	4.4	0.1	510	4	32	55	59
22SLP013	Midway East Ridge	0.001	0.000	-	0.5	0.0	3	7	14	30

\*Selective rock grab samples are illustrative of the tenor of mineralization for the material collected but may or may not be characteristic of the overall mineralization of the deposit as they are selective in nature..

**Assay Highlights – more sampling has been conducted**

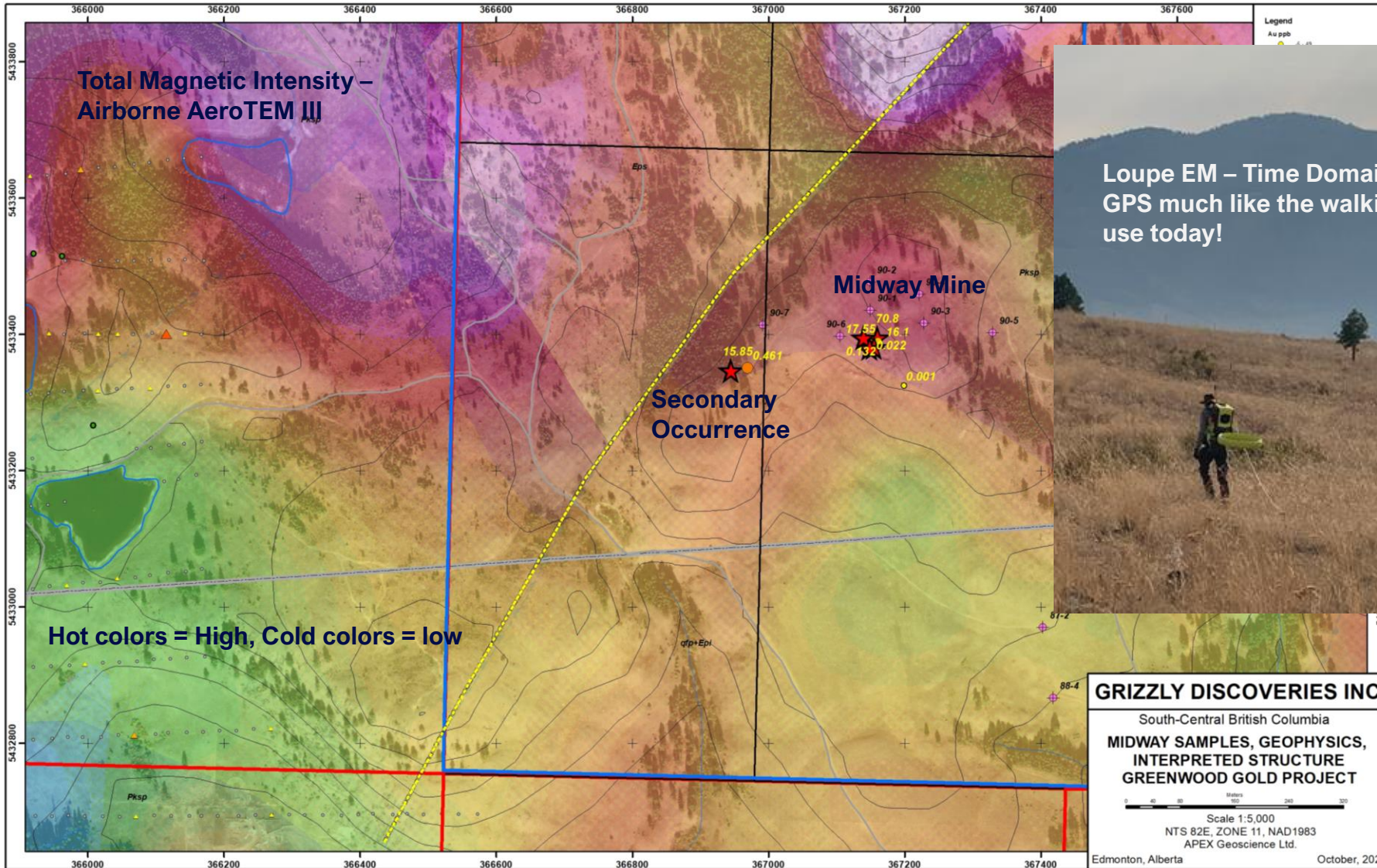
**Massive sulphide – pyrite, arsenopyrite, galena, sphalerite, stibnite, electrum etc in multiple vein/fault breccia zones and structures**



# Midway Mine 2022 – Airborne & Ground Geophysics



## Sampling and Airborne Survey



Loupe EM – Time Domain EM with continuous readings and GPS much like the walking Magnetometer system that most of use today!

**GRIZZLY DISCOVERIES INC.**  
 South-Central British Columbia  
**MIDWAY SAMPLES, GEOPHYSICS,  
 INTERPRETED STRUCTURE  
 GREENWOOD GOLD PROJECT**

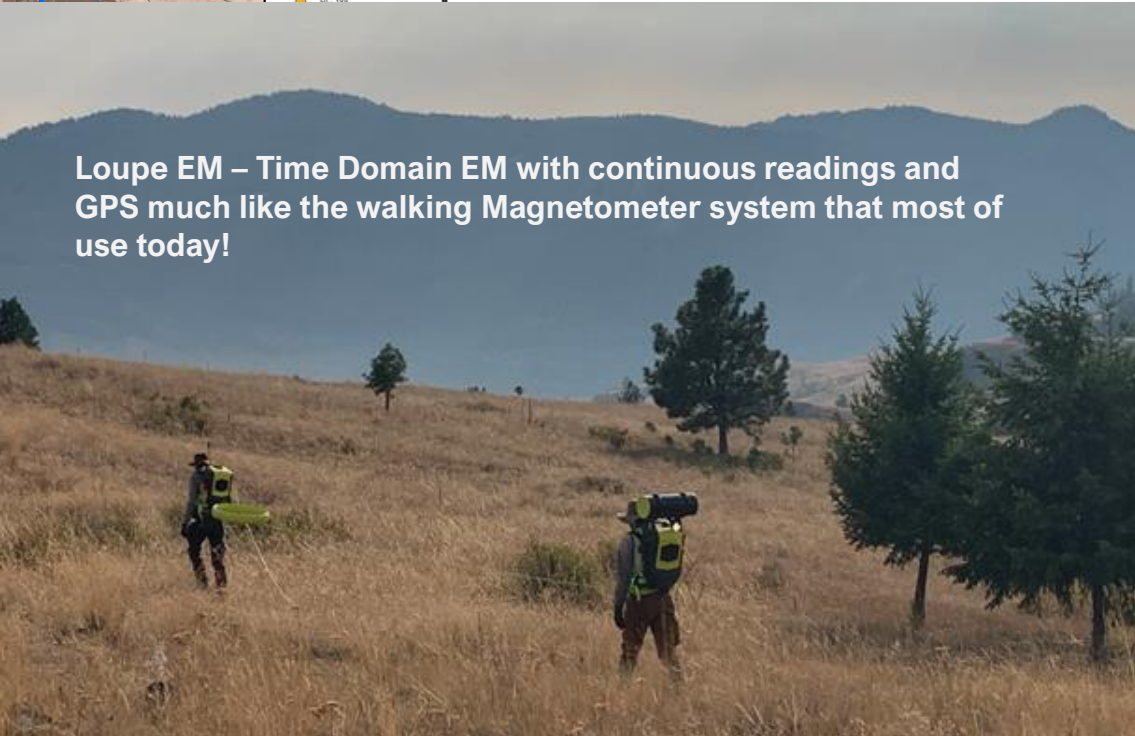
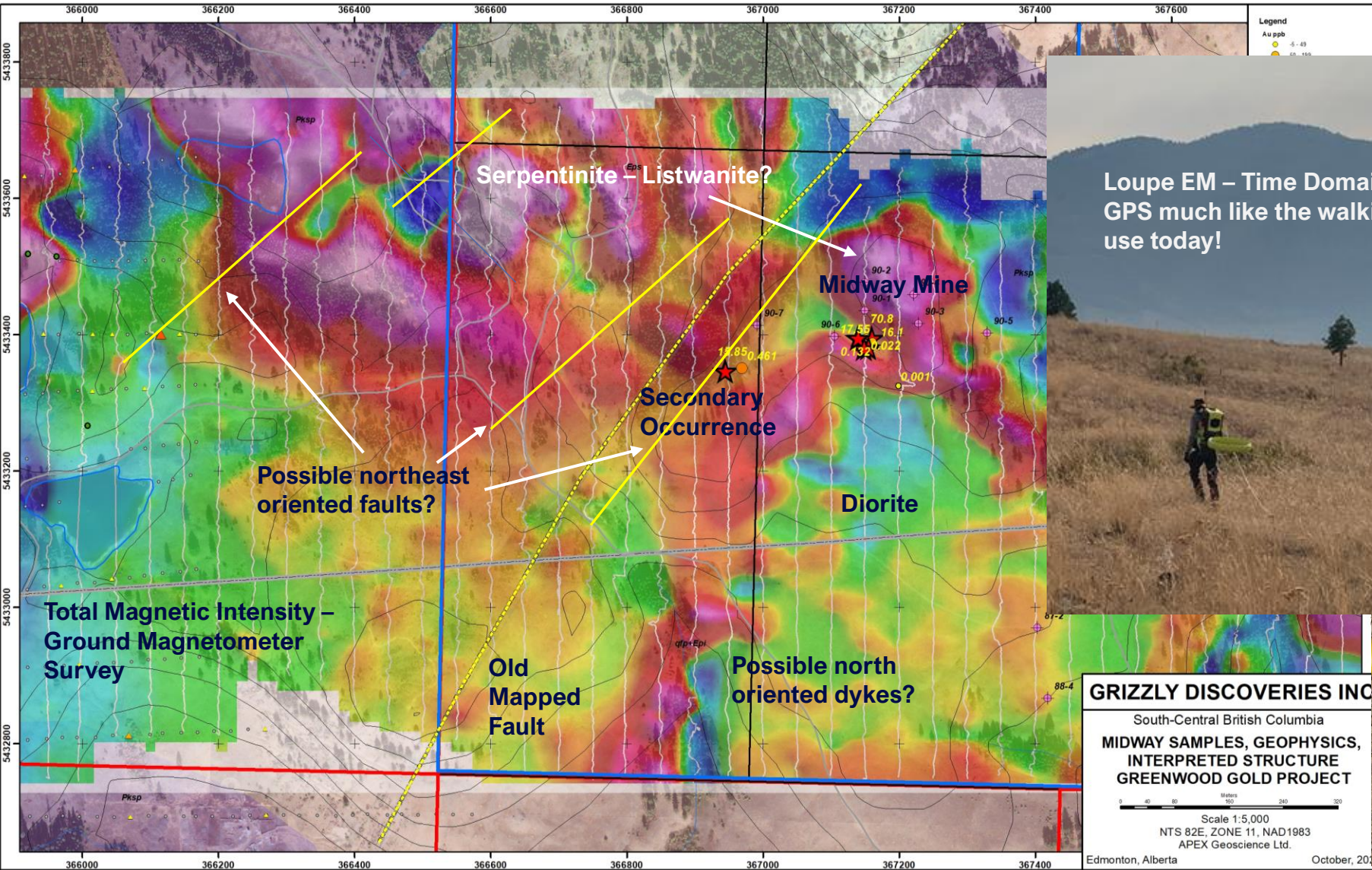
Scale 1:5,000  
 NTS 82E, ZONE 11, NAD1983  
 APEX Geoscience Ltd.  
 Edmonton, Alberta      October, 2022



# Midway Mine 2022 – Ground Geophysics



## Sampling and Ground Geophysical Survey



**GRIZZLY DISCOVERIES INC**

South-Central British Columbia

**MIDWAY SAMPLES, GEOPHYSICS, INTERPRETED STRUCTURE GREENWOOD GOLD PROJECT**

0 40 80 120 160 200 240 280  
 Meters

Scale 1:5,000  
 NTS 82E, ZONE 11, NAD1983  
 APEX Geoscience Ltd.

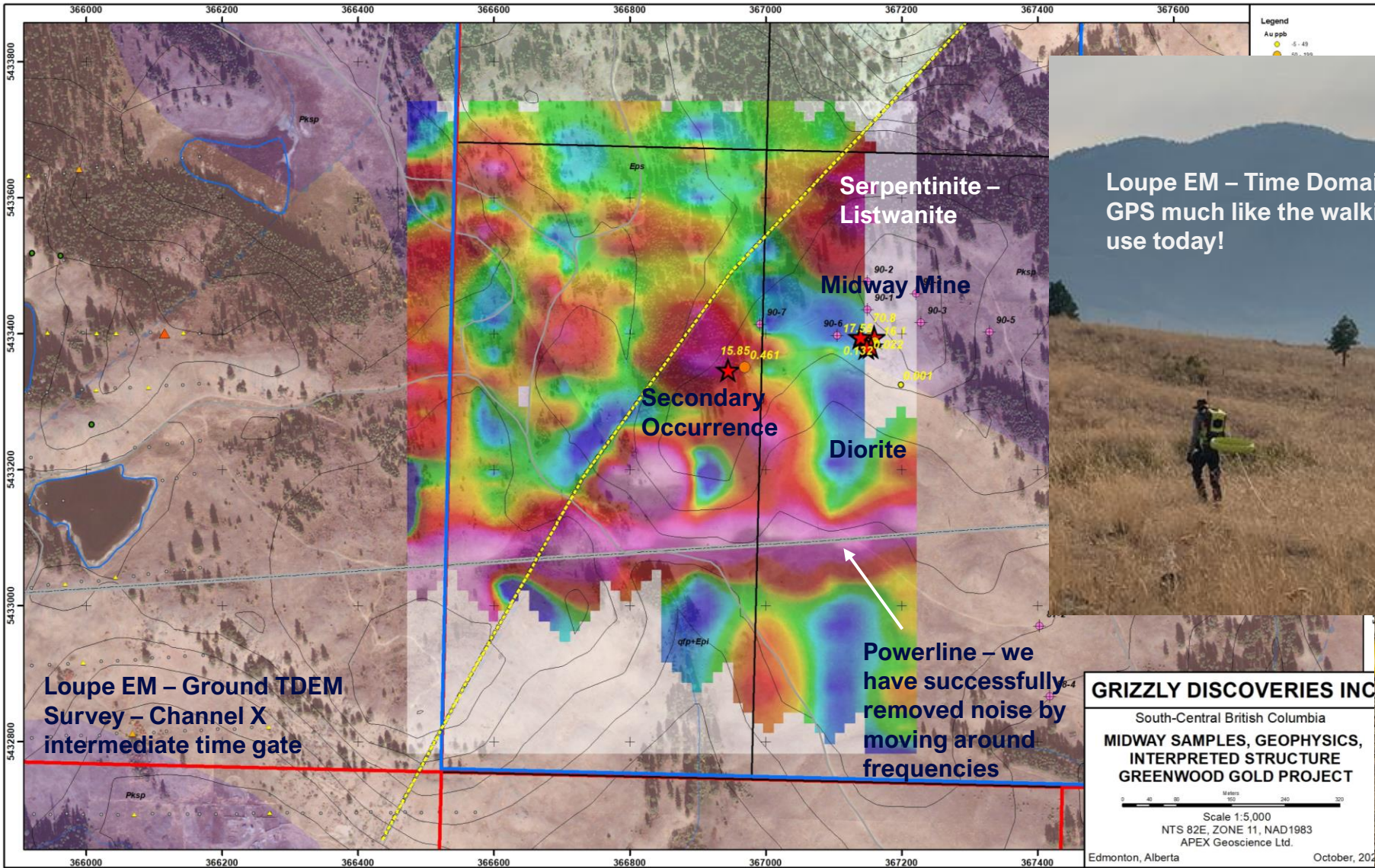
Edmonton, Alberta October, 2022



# Midway Mine 2022 – Ground Geophysics



## Sampling and Ground Geophysical Survey



Loupe EM – Time Domain EM with continuous readings and GPS much like the walking Magnetometer system that most of use today!

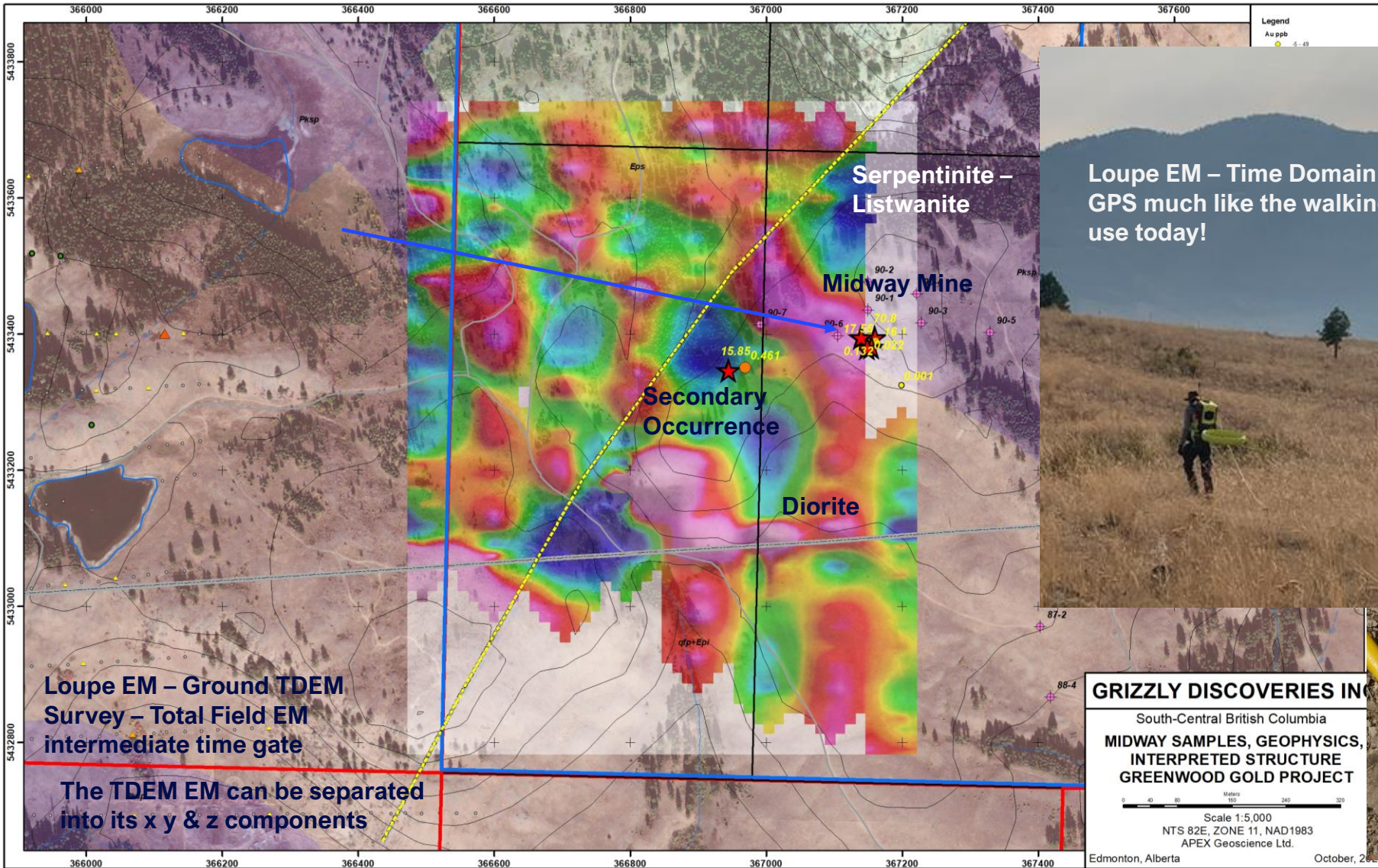


**GRIZLY DISCOVERIES INC**  
 South-Central British Columbia  
**MIDWAY SAMPLES, GEOPHYSICS,  
 INTERPRETED STRUCTURE  
 GREENWOOD GOLD PROJECT**  
 Scale 1:5,000  
 NTS 82E, ZONE 11, NAD1983  
 APEX Geoscience Ltd.  
 Edmonton, Alberta      October, 2022

# Midway Mine 2022 – Ground Geophysics



## Sampling and Ground Geophysical Survey



Loupe EM – Time Domain EM with continuous readings and GPS much like the walking Magnetometer system that most of use today!

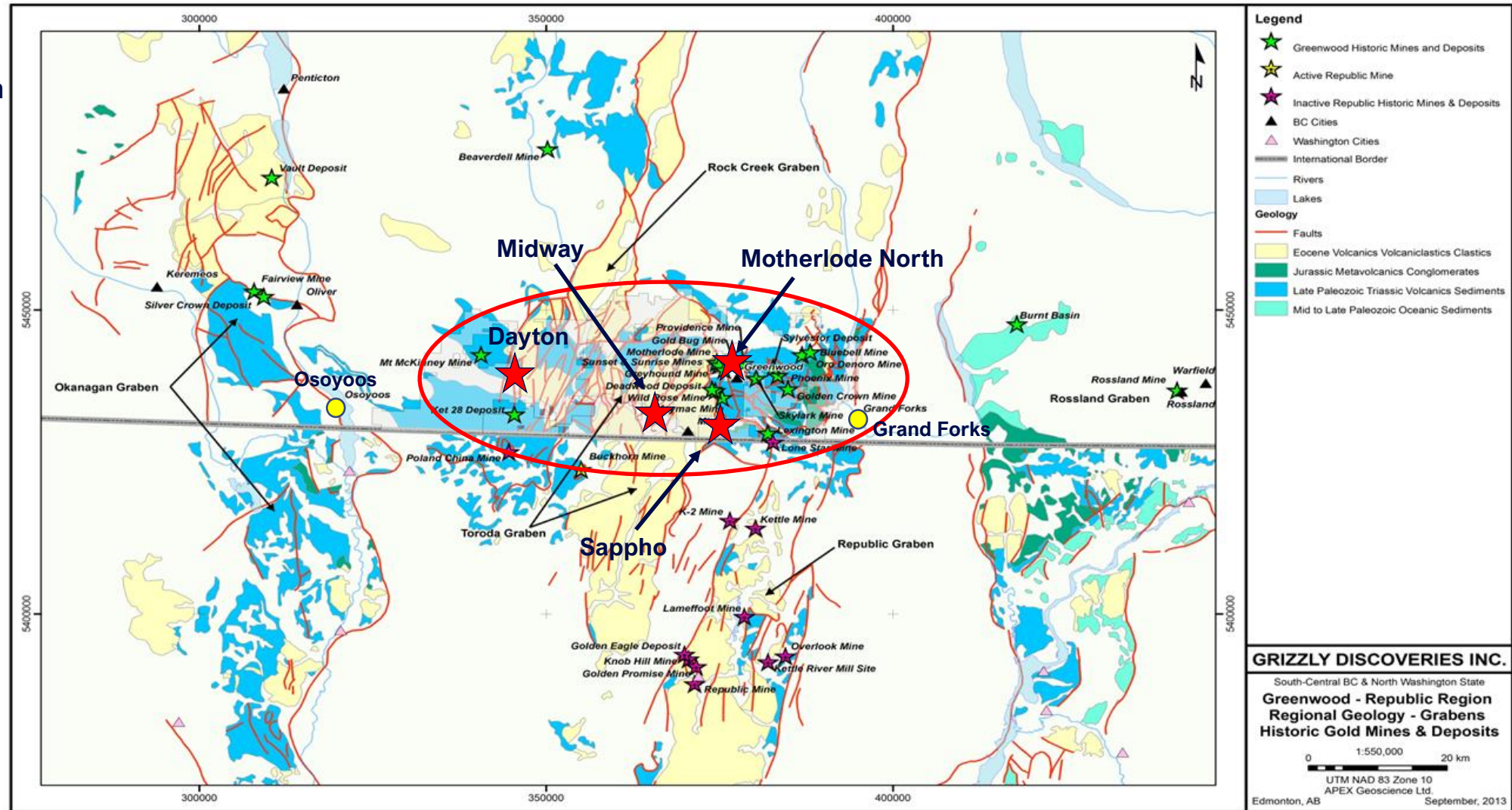


**GRIZZLY DISCOVERIES INC.**  
 South-Central British Columbia  
**MIDWAY SAMPLES, GEOPHYSICS,  
 INTERPRETED STRUCTURE  
 GREENWOOD GOLD PROJECT**  
 Scale 1:5,000  
 NTS 82E, ZONE 11, NAD1983  
 APEX Geoscience Ltd.  
 Edmonton, Alberta      October, 2022

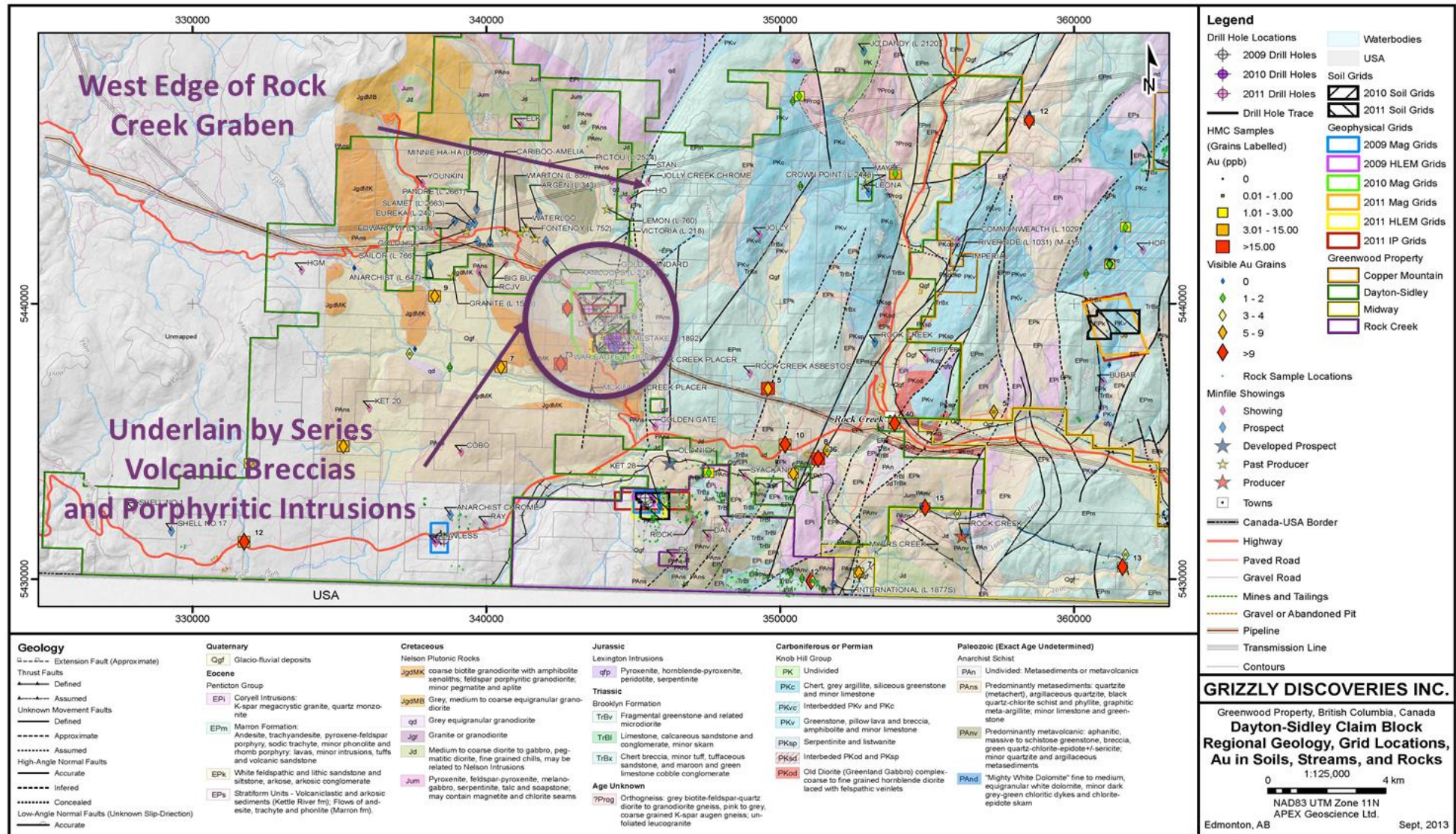


# Tertiary Grabens – Dayton Target – West Edge of Rock Creek Graben

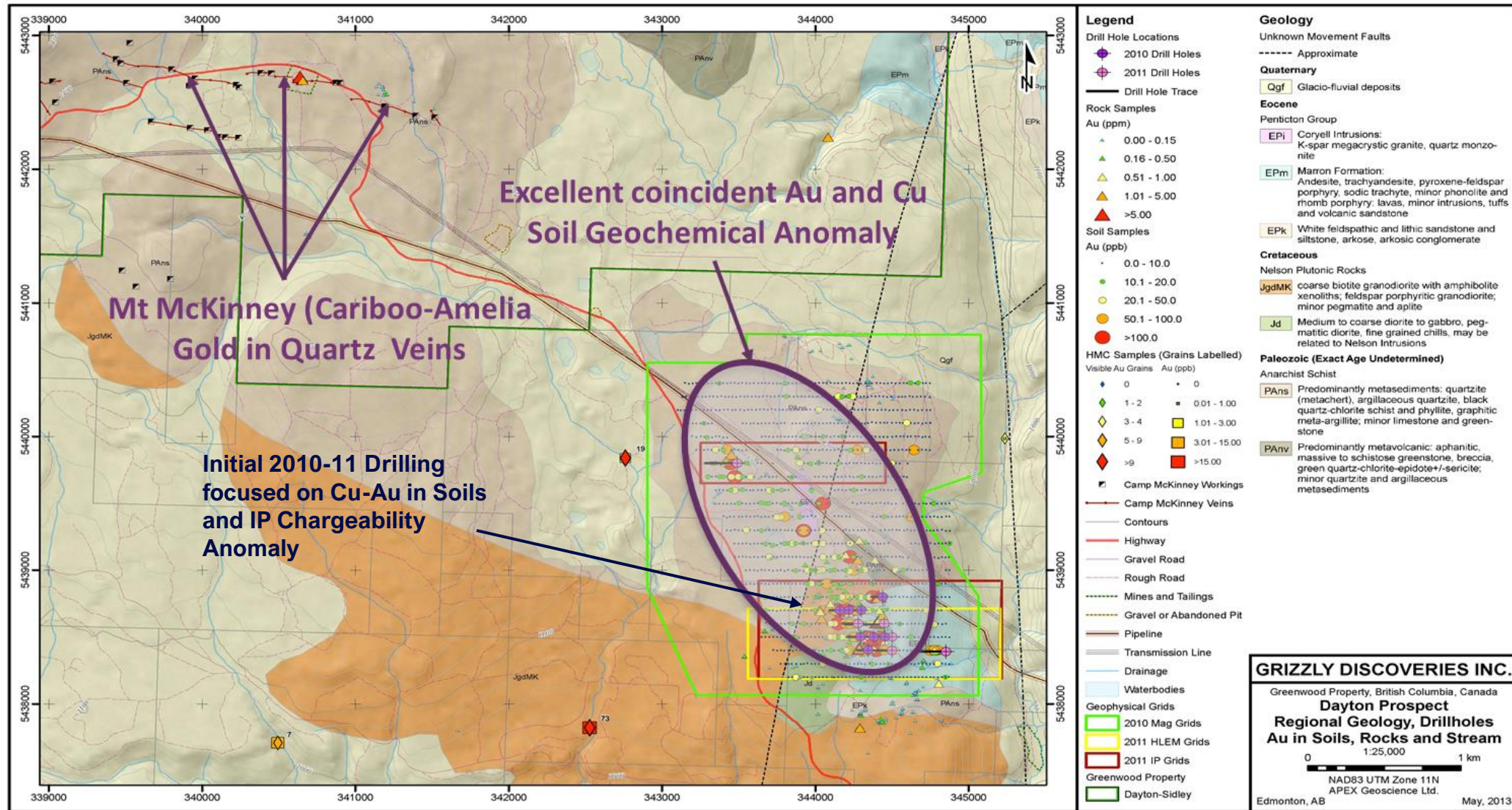
- Fault bounded Tertiary grabens bordered by high grade metamorphic terranes
- Cored by west edge NA Paleozoic to Triassic volcanics (basalt) & sediments (in blues)
- intruded by 4 ages of intrusives; Triassic, Jurassic, Cretaceous and Tertiary - overlain & cut by Tertiary volcanics (in yellow)



# Dayton Regional Geology – Edge of Graben

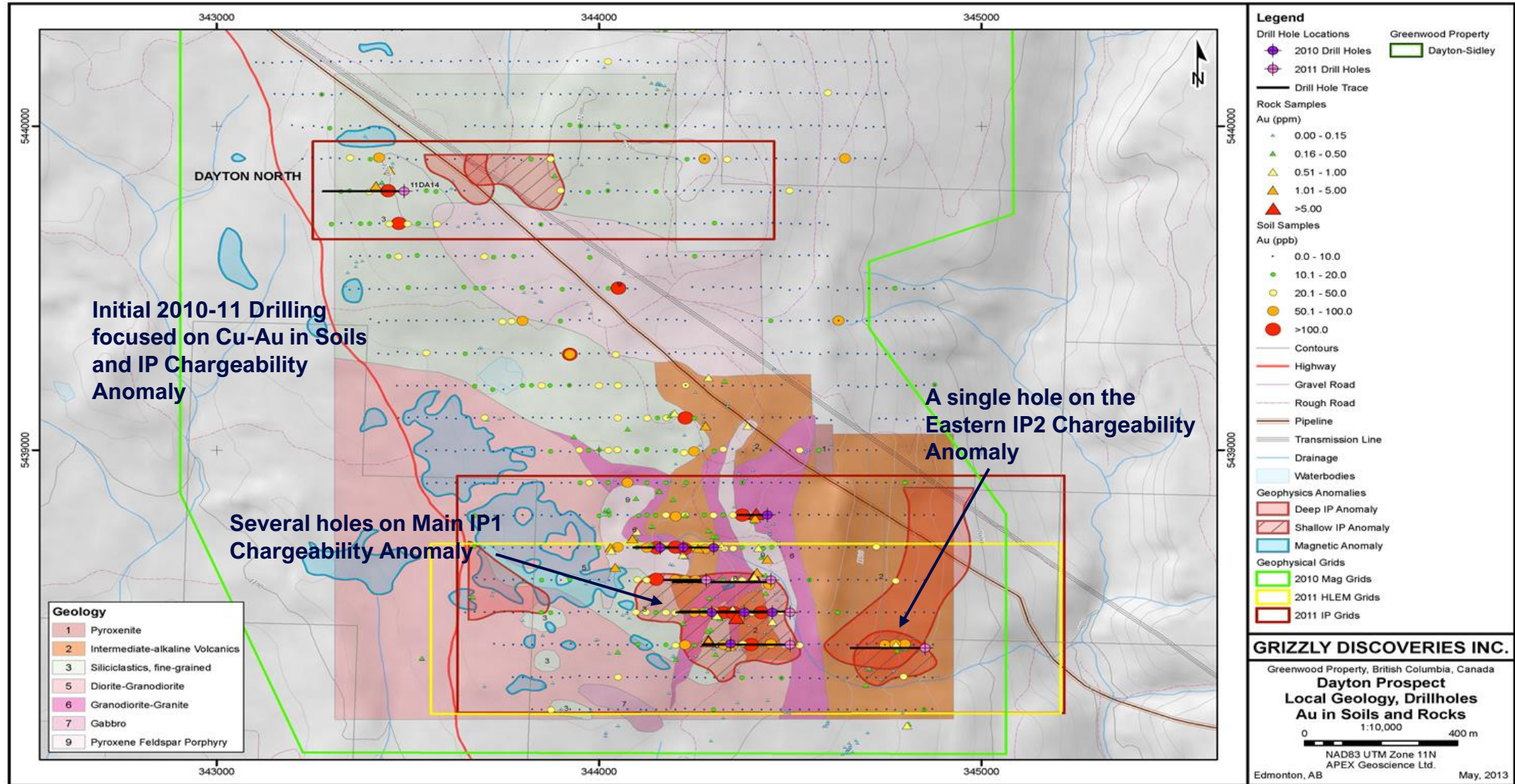


# Dayton Geochemistry Cu-Au Anomaly

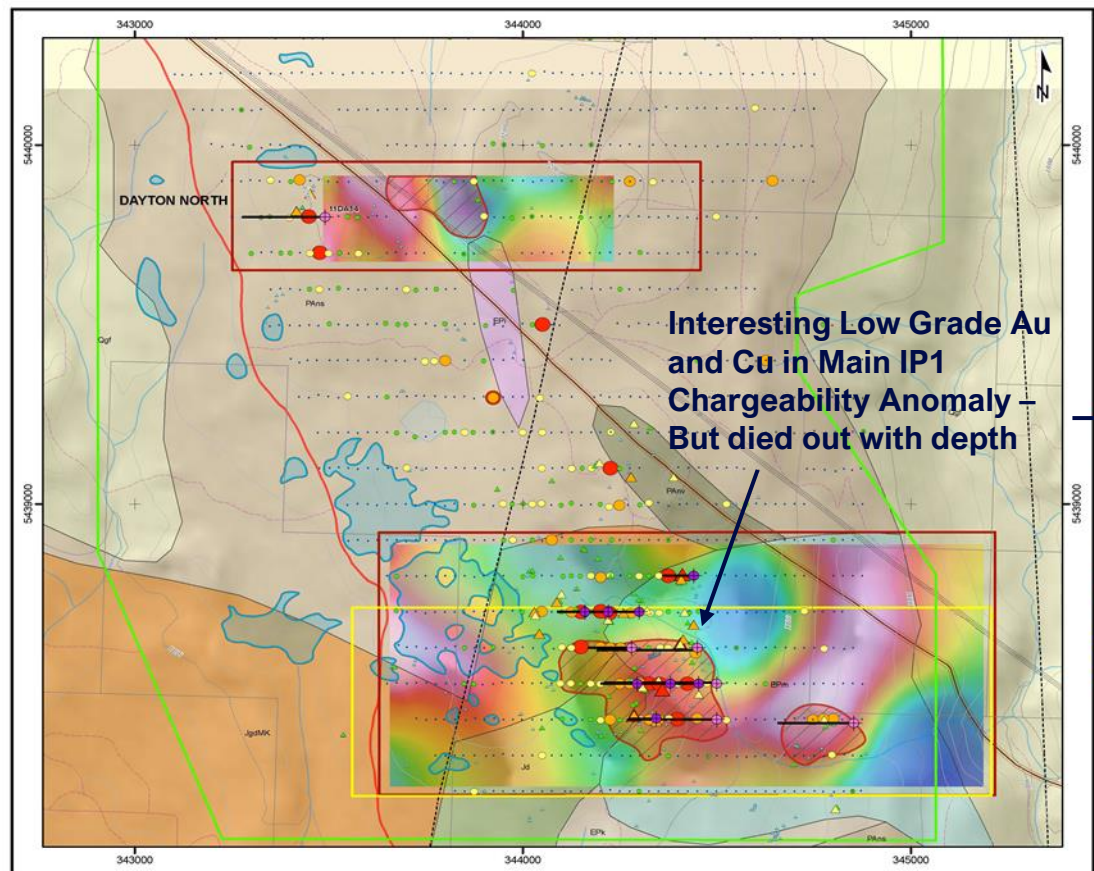




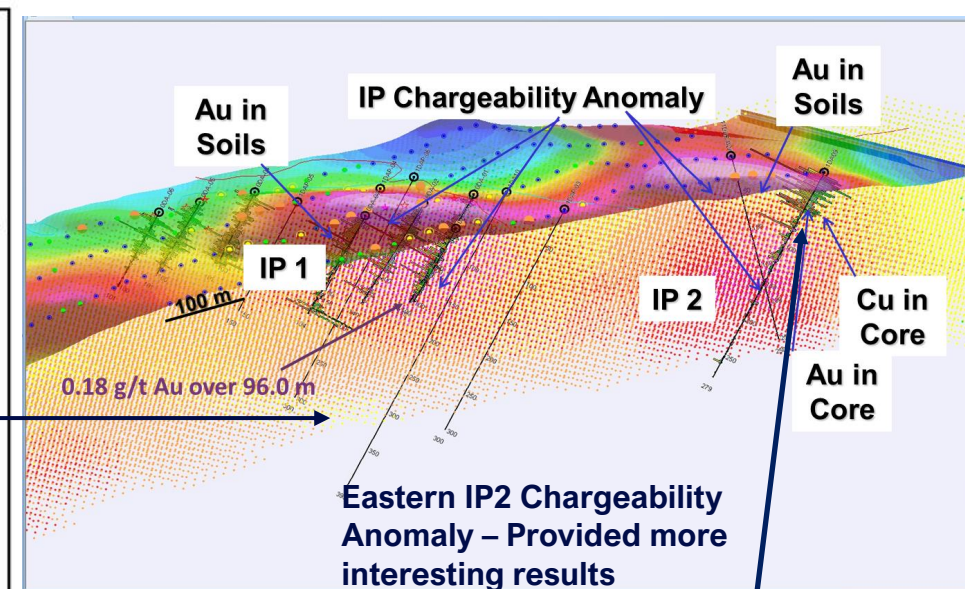
# Dayton Property Geology – Series of Intrusions & Altered Volcs



# Dayton Drilling & IP Target to Follow-up Drill Test



Interesting Low Grade Au and Cu in Main IP1 Chargeability Anomaly – But died out with depth



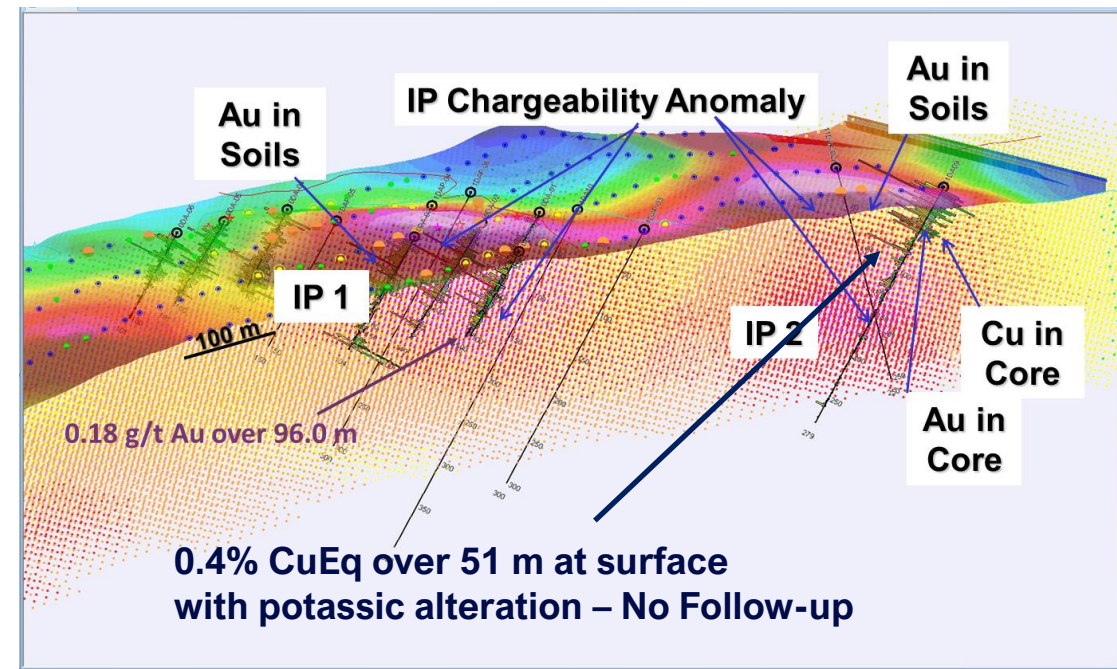
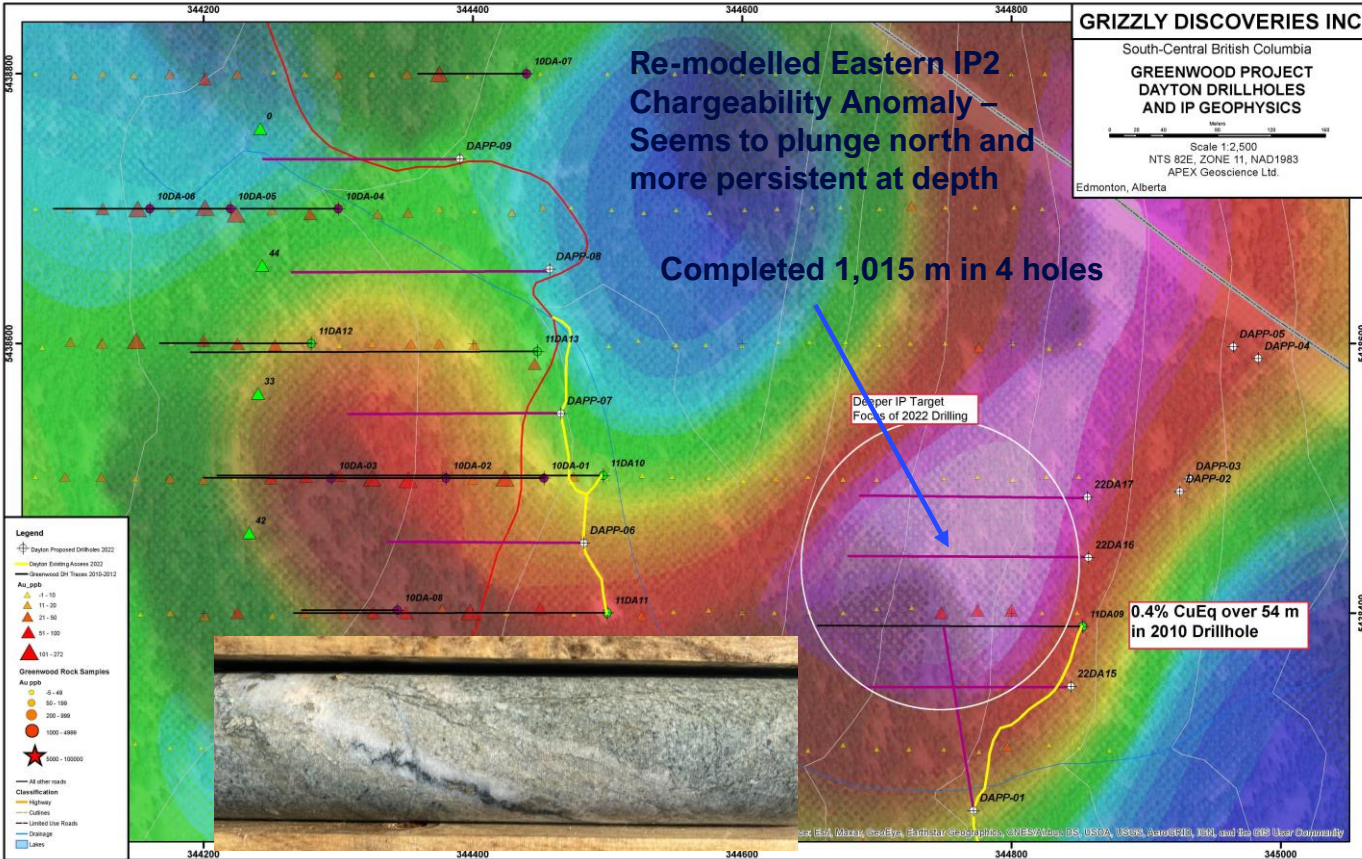
0.4% CuEq over 51 m at surface with potassic alteration – No Follow-up

- Intersection in 11DA09 hosted in a pervasively altered mafic to intermediate volcanic breccia – Au-Cu-Ag are associated with strong potassic alteration

Target	Drillhole	Interval (m)	Au (g/t)	Ag (g/t)	Cu %
Dayton	10DA01	96.0	0.18		0.029
Dayton	10DA02	86.5	0.18		0.055
Dayton	11DA09	51.0	0.43	0.81	0.15

GRIZZLY DISCOVERIES INC.  
Greenwood Property, British Columbia, Canada  
Dayton Prospect  
Regional Geology, Drillholes  
Au in Soils and Rocks  
on Apparent Deep Chargeability IP Ground Geophysics  
1:110,000  
NAD83 UTM Zone 11N  
APEX Geoscience Ltd.

# Dayton Drilling 2022

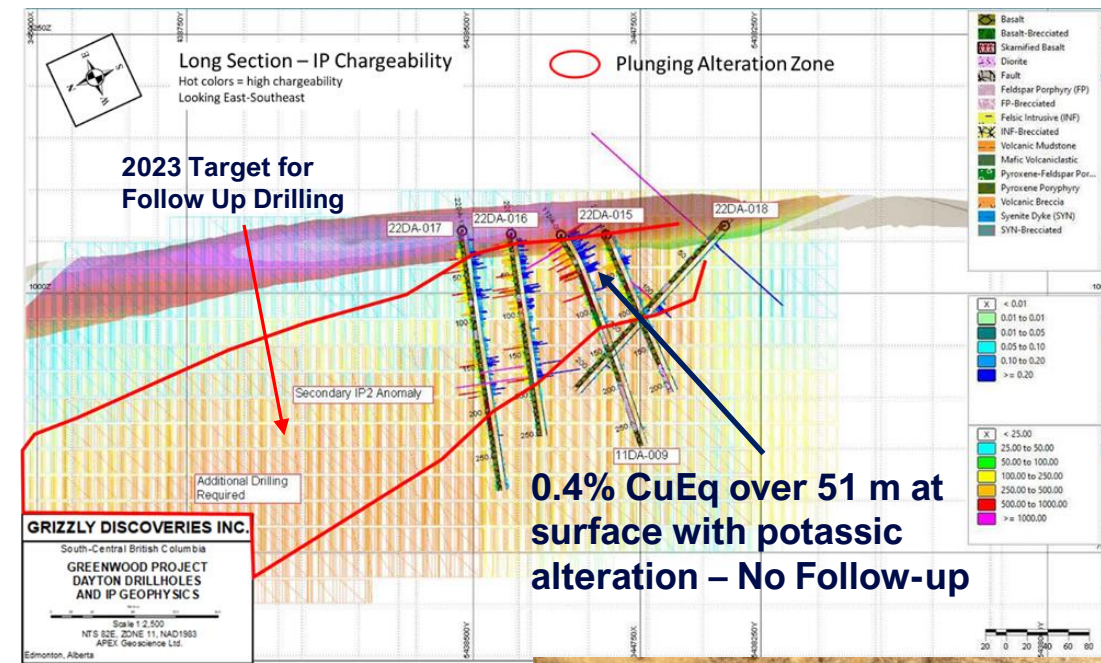
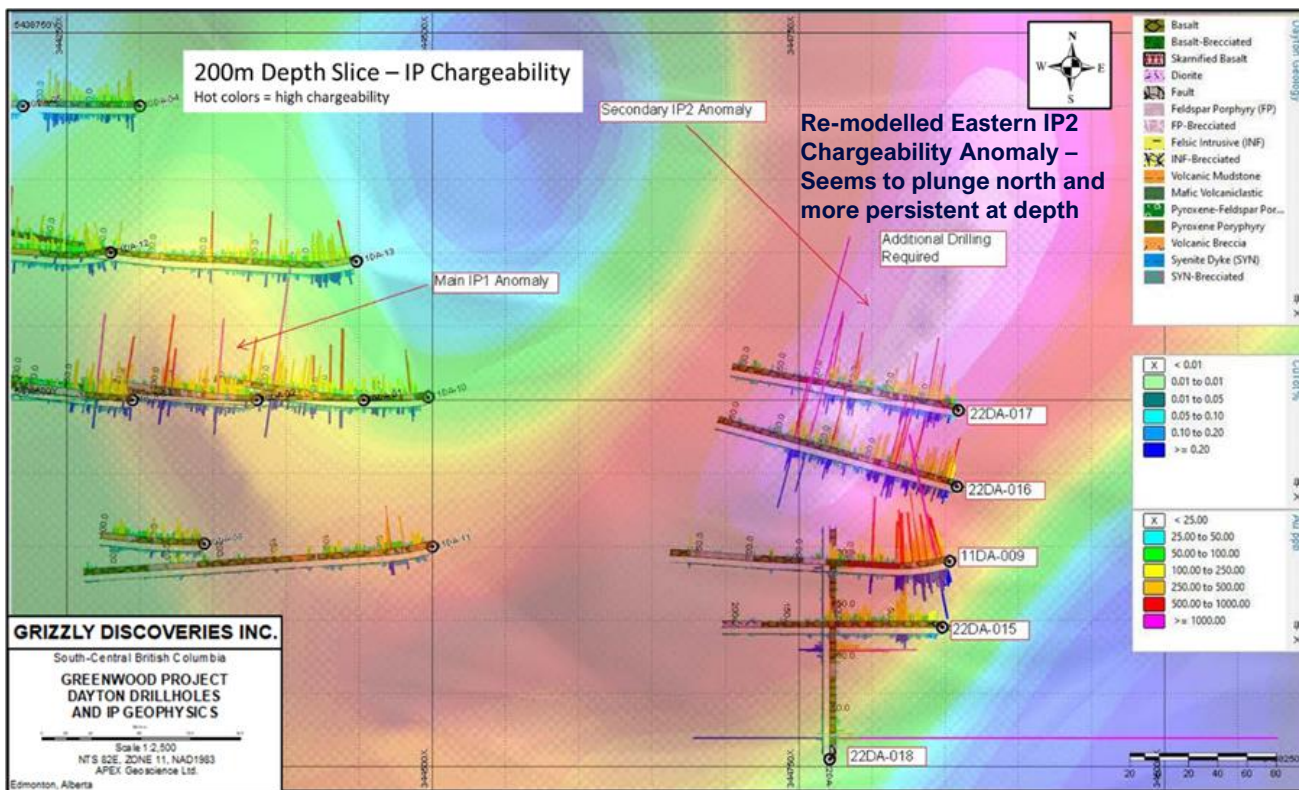


**2022 Drilling intersected skarnified and strongly altered volcanics and diorite intrusions, micro-veined zones and substantial sulphides! Particularly the Northernmost two holes.**

- Intersection in 11DA09 hosted in a pervasively altered mafic to intermediate volcanic breccia – Au-Cu-Ag are associated with strong potassic alteration

Target	Drillhole	Interval (m)	Au (g/t)	Ag (g/t)	Cu %
Dayton	10DA01	96.0	0.18		0.029
Dayton	10DA02	86.5	0.18		0.055
Dayton	11DA09	51.0	0.43	0.81	0.15

# Dayton Drilling 2022



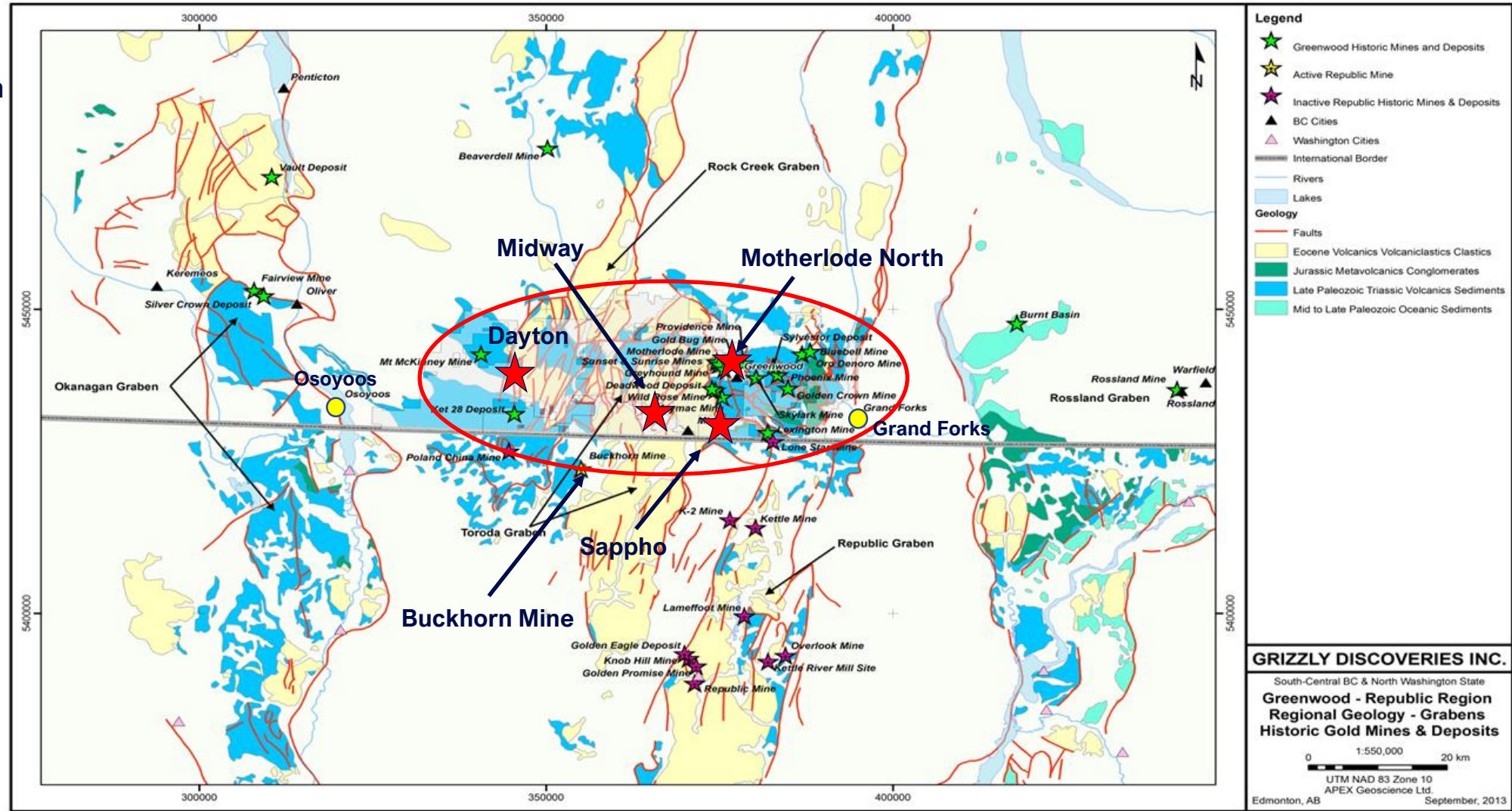
- Intersection in 11DA09 hosted in a pervasively altered mafic to intermediate volcanic breccia – Au-Cu-Ag are associated with strong potassic alteration
- 2022 Drilling intersected skarnified and strongly altered volcanics and diorite intrusions, micro-veined zones and substantial sulphides ! Particularly the Northernmost two holes.
- 2023 additional drilling is being planned.

DH	From m	To m	Width m*	Au ppm	Ag ppm	Cu %	CuEq%**
<u>22DA-015</u>	6	50.5	44.5	0.155	2.06	0.033	0.162
<u>22DA-016</u>	7	187	180	0.201	1.89	0.062	0.221
<u>includes</u>	7	94	87	0.222	1.41	0.081	0.251
<u>22DA-017</u>	9	184	175	0.149	1.76	0.057	0.177
<u>22DA-018</u>	20	21	1	6.05	15.30	0.026	4.445
<u>and</u>	98	113	15	0.261	2.65	0.023	0.231
<u>includes</u>	103	111	8	0.419	2.60	0.021	0.341
<u>11DA-009***</u>	3	54	51	0.43	0.81	0.15	0.462

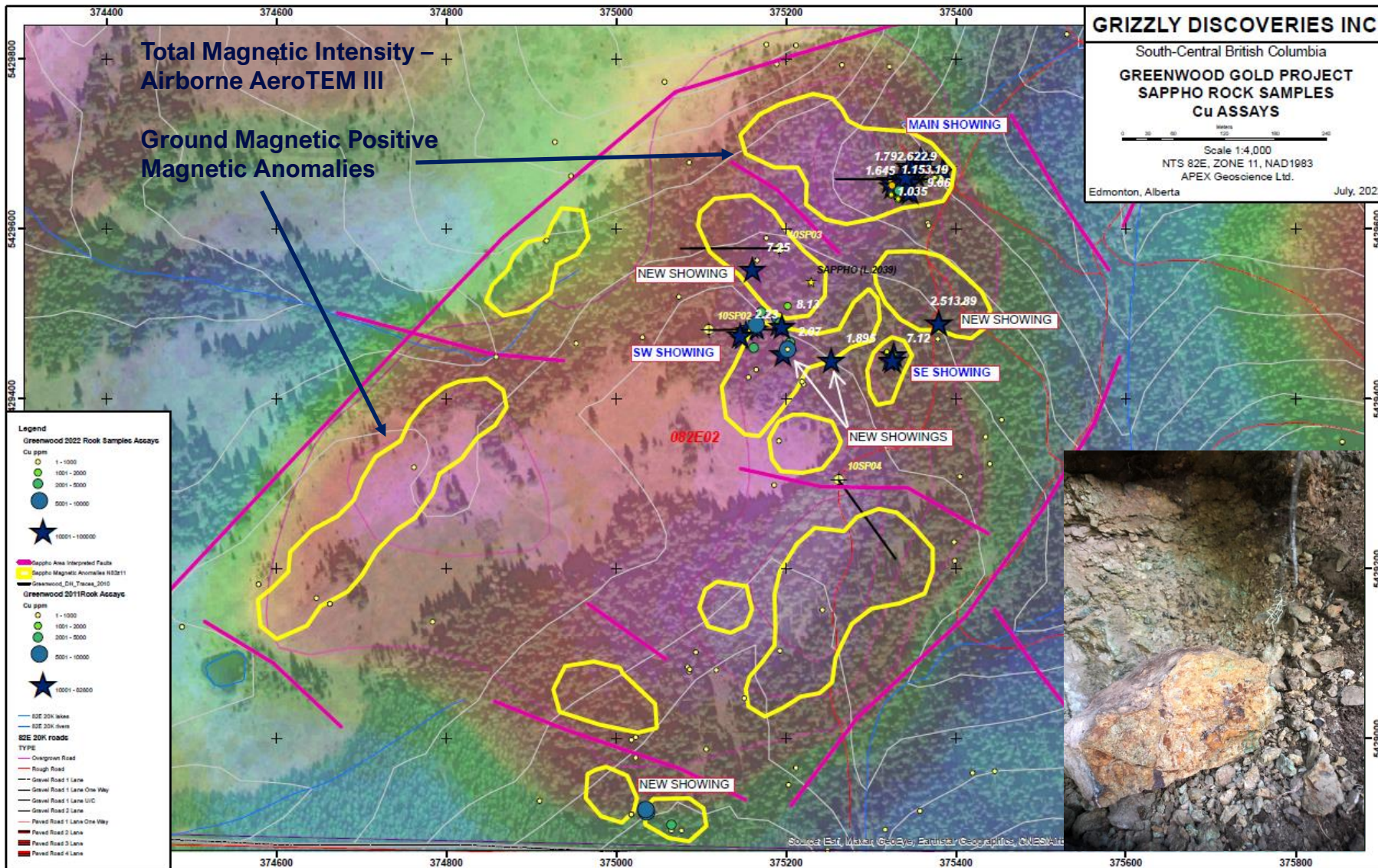


# Tertiary Grabens – Sappho Target – East Edge of Toroda Graben

- Fault bounded Tertiary grabens bordered by high grade metamorphic terranes
- Cored by west edge NA Paleozoic to Triassic volcanics (basalt) & sediments (in blues)
- intruded by 4 ages of intrusives; Triassic, Jurassic, Cretaceous and Tertiary - overlain & cut by Tertiary volcanics (in yellow)

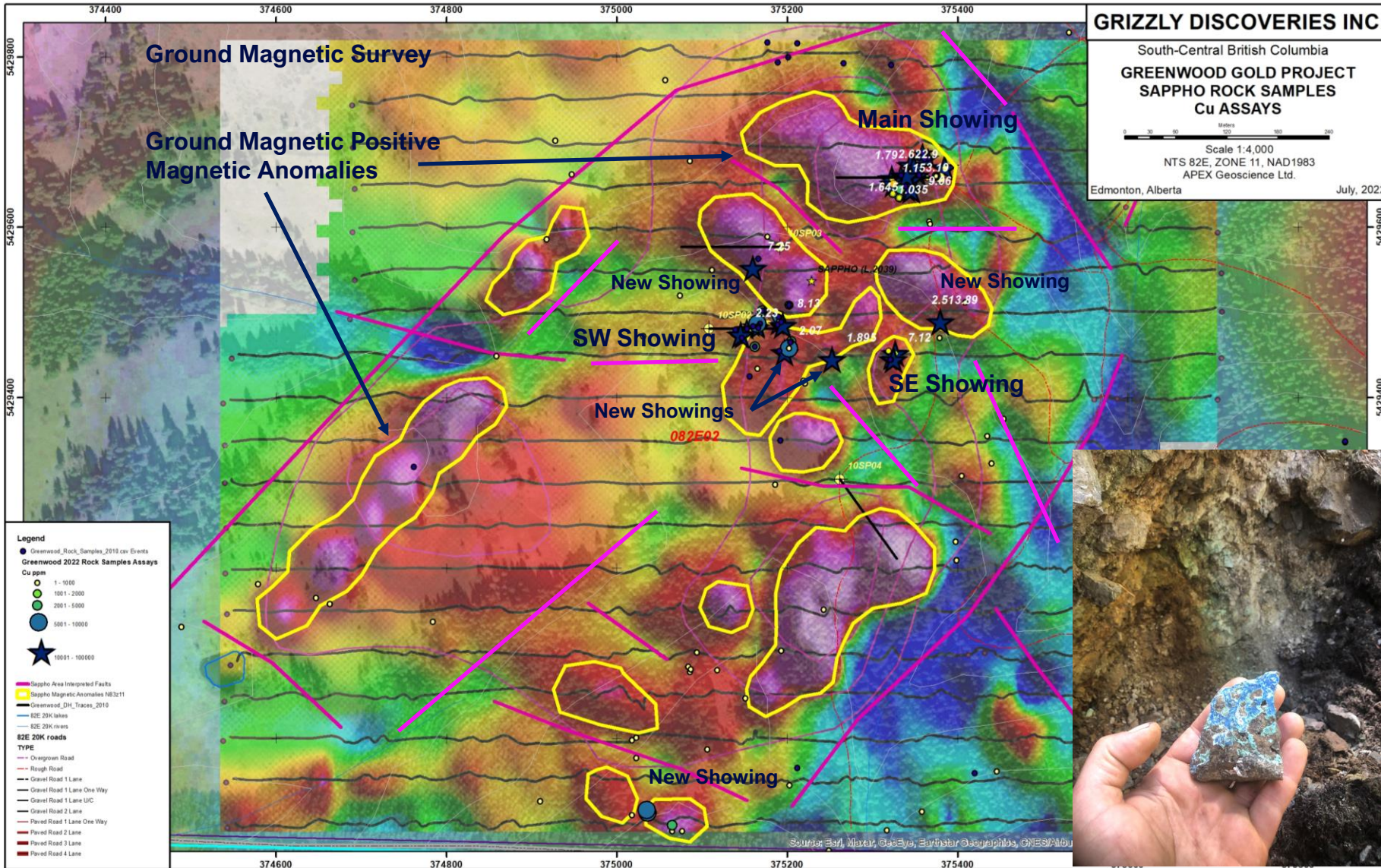


# Sappho Target 2022 – Sampling and Ground Geophysics



- Setting is the East Contact of the Toroda Graben with numerous pyroxenite-monzonite-diorite (older) and younger QFP-diorite (Tertiary) intrusions into intermediate-mafic volcanics
- Five (5) new sulphide showings with 4 of 5 yielding >1% Cu values in grab samples
- The 5<sup>th</sup> new showing near the US border with multiple grab samples just under 1% Cu
- One of the new showings yielding up to 7.25% Cu – a grab from the Main Showing yielded 9.06% Cu
- A total of 141 samples, mostly grabs, collected in 2022, with 26 samples >1,000 ppm Cu and 17 samples >1% Cu. Many with anomalous Au, Ag, Pt and Pd as well
- Historical drilling with skarn, sulphidic diorite & volcanics with significant intersections of Cu, Au, Ag, Pt and Pd – Only 4 holes drilled to date
- 2022 work – significant prospecting sampling and ground magnetics
- Planning a trial with the new Loupe EM system

# Sappho Target 2022 – Sampling and Ground Geophysics



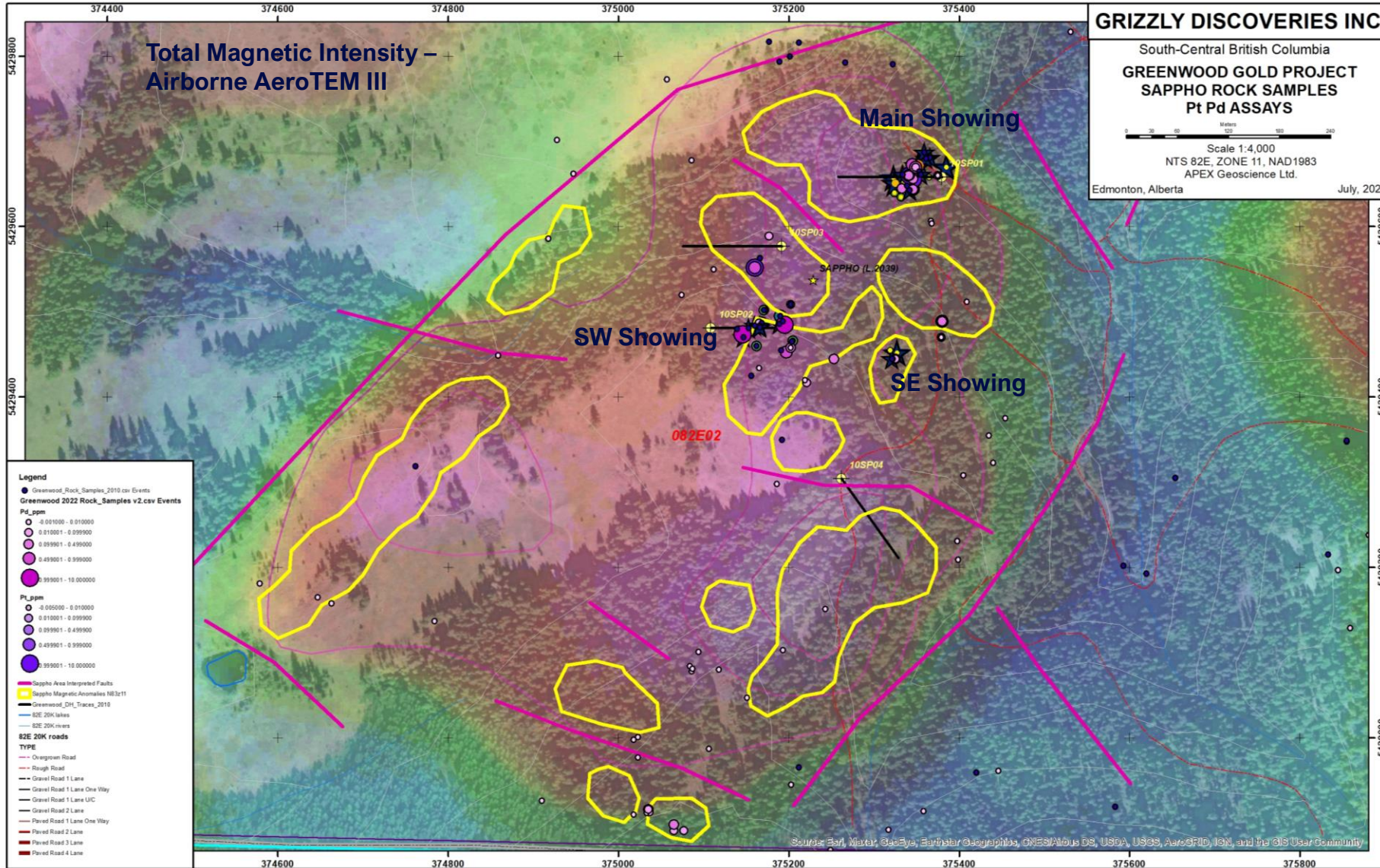
- Ground Magnetic Survey helps delineate likely faults and perhaps individual intrusive centers
- Certainly provides a better picture of the local fault architecture
- A test Loupe EM survey is planned for the Sappho Target area

Selective grabs up to 9% Cu with > 1 g/t Au, Pt, Pd



Sappho Cu Mineralization

# Sappho Target 2022 – Sampling and Ground Geophysics



- PGEs and historical work
- 2022 Exploration - A total of 17 samples with > 100 ppb Pt and with > 100 ppb Pd
- A total of 11 samples with > 500 ppb Pt and > 500 ppb Pd
- Maximum assays results for 2022 of up to 4.64 g/t (ppm) Pt and 2.28 g/t Pd
- Historical 2009-2010 sample results have yielded up to 27.1 g/t Pt and 2.51 in rock grab samples
- Historical (2010) drilling up to 3.82 g/t Au, 199 g/t Ag, and in separate samples 1.83 g/t Pt and 2.09 g/t Pd across 1 m in core samples – these results all associated with >1% Cu in those samples. Best results in hole 3 – a blind hole targeting magnetic anomaly
- Graham Nixon’s work showed these highly anomalous results to be associated with Jurassic Alkaline Intrusive Complex hos rocks
- Historical Production at Sappho is listed as 102 tonnes between 1916 and 1918 yielding 5.6% Cu and 61.7 g/t Ag, with significant Pt (Nixon and Archibald (2001)).



# Grizzly Greenwood Drilling Highlights



Target	Drillhole	Interval (m)	Gold (g/t)	Silver (g/t)	Copper%	Copper *Eq%
Ket 28	KT-1	6.1	8.91			
Ket 28	94RM1-2C	3.35	52.18			
Ket 28	9KT01	11.0	2.77	2.38		
Ket 28	9KT02	2.0	11.9	3.2		
<b>Copper Mountain</b>	10CM07	30.0	1.0	4.65	0.03	
<i>includes</i>	10CM07	5.0	4.31	10.14	0.06	
<b>Copper Mountain</b>	10CM11	7.0	1.1	2.12	0.08	
<b>Dayton</b>	10DA02	86.5	0.18		0.055	
<b>Dayton</b>	<b>11DA09</b>	<b>51.0</b>	<b>0.43</b>	<b>0.81</b>	<b>0.15</b>	<b>0.4</b>
<b>Motherlode</b>	11ML03	19.0	1.56	11.12	0.07	
<i>includes</i>	11ML03	4.5	6.07	15.13	0.03	
<b>Motherlode</b>	11ML05	14.85	1.64	3.15	0.01	
<i>includes</i>	11ML05	1.5	6.79	11.10	0.05	
<b>Sappho</b>	<b>10SP03</b>	<b>63.5</b>	<b>0.22</b>	<b>6.57</b>	<b>0.124</b>	<b>0.38</b>

Significant  
Cu at  
Sunshine  
& Sunset  
Pits

PGE's

# 2022 Advancement - Midway Acquisition & Other Exploration



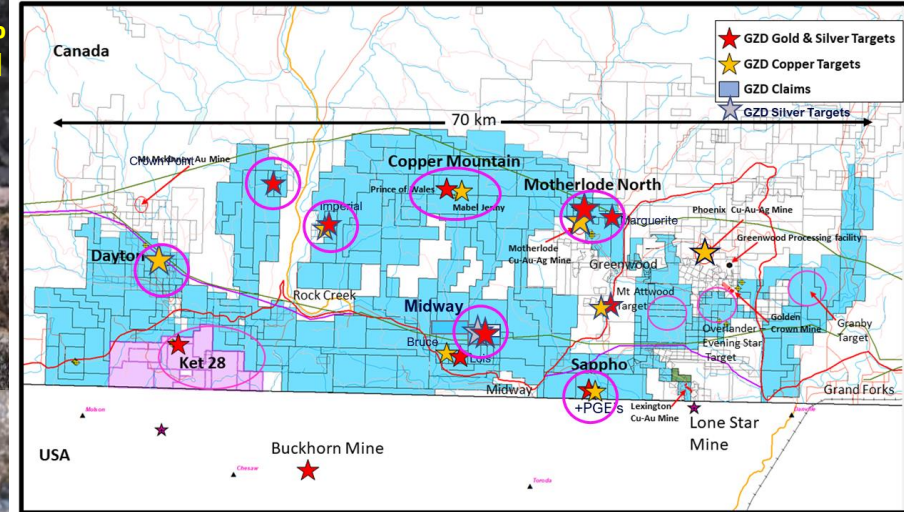
## Other Targets Greenwood Exploration 2022

- During the 2022 Exploration Program work including prospecting, rock sampling, soil sampling and ground geophysics has been performed at a number of other targets, some new, to bring them up to potential drill targets
- Includes the new historical Midway Mine, Sappho, Copper Mountain, Overlander, Motherlode area, Ket 28 area, Imperial and Crown Point showings
- Applications for drilling at several of these targets has commenced and will be submitted before EOY
- Additional field work and ground geophysical surveys conducted by GZD and a joint venture partner on the order of \$500,000 for 2022

Selective grabs up to 9% Cu with > 1 g/t Au, Pt, Pd



Sappho Cu Mineralization



A number of selective grab samples with > 10 g/t Au



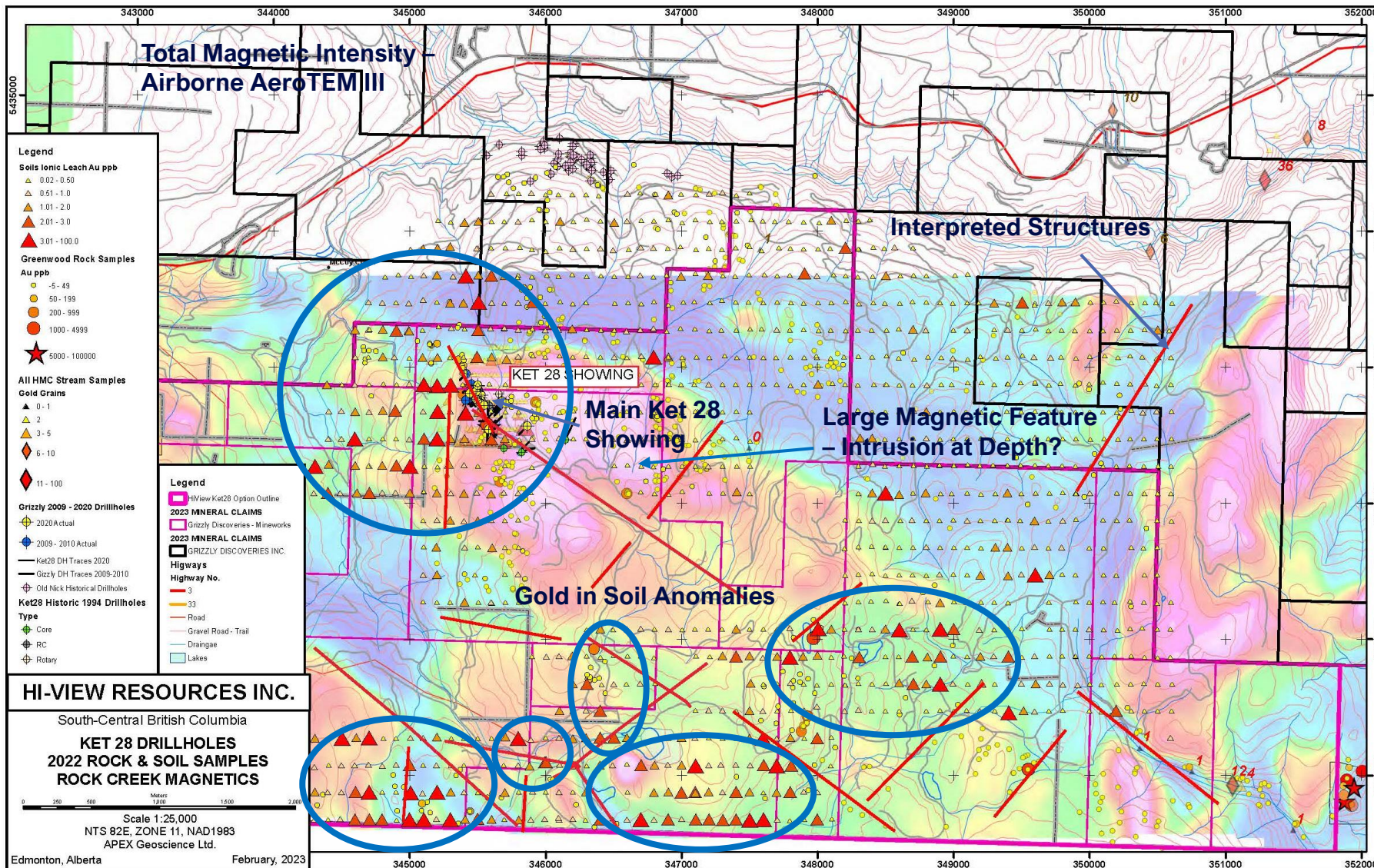
Overlander Veins



Midway Vein

A number of selective grab samples with >500 g/t Ag and 10 g/t Au up to 2,140 g/t Ag and 70.8 g/t Au

# Ket 28 - 2022 Regional Sampling Program

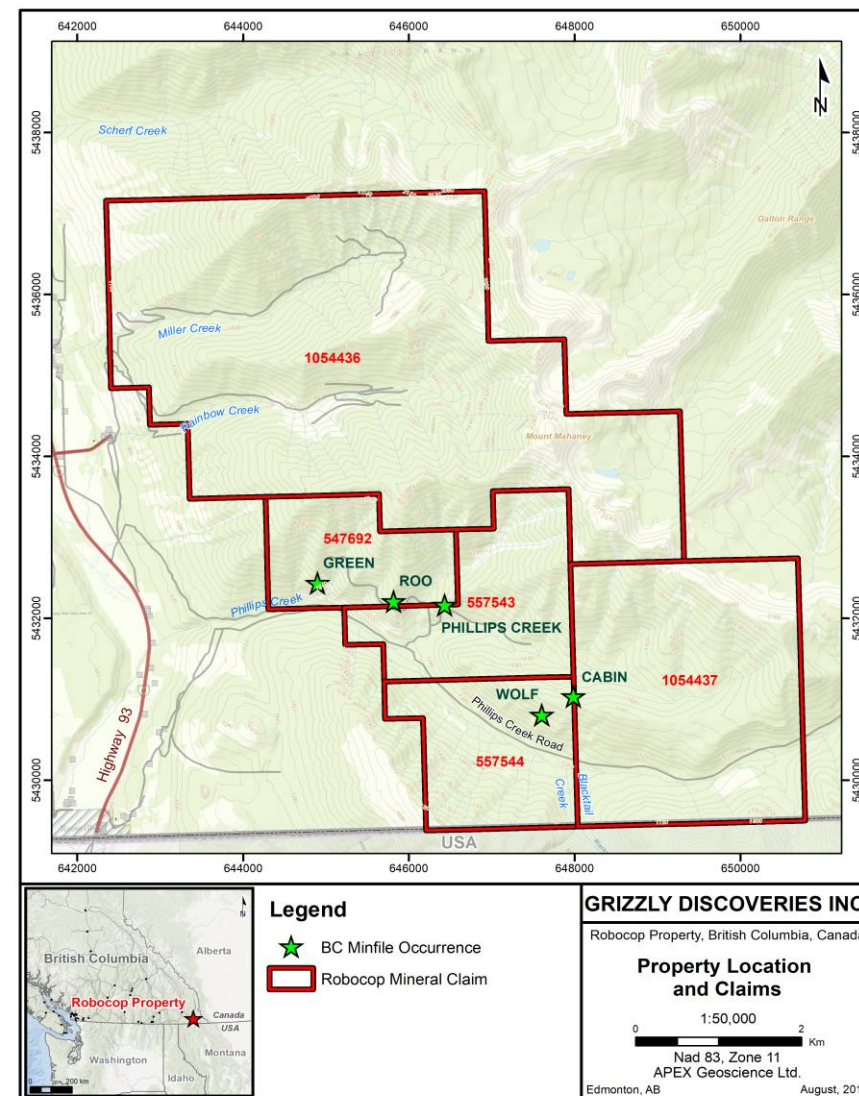


- More than 1,300 soil samples collected and assayed using ionic leach.
- First significant systematic regional sampling program with soil samples collected in a 100 m by 200 m grid pattern and analysed for gold and multi-elements using ionic leach.
- A significant and expanded gold in soil anomaly associated with Ket 28
- A number of new gold in soil anomalies detected to the south-southeast up against the US Border.
- A total of 129 rock grab samples collected across the Ket 28 area with up to 1.5 grams per tonne (g/t) gold (Au) from a sample within the southern anomalous gold in soil area.
- Ket 28 precious metal mineralization is hosted in Late Paleozoic Anarchist volcanic and sedimentary rocks with mineralization consisting of pyrite with minor galena and sphalerite in quartz veins, stockworks and pods associated with north, northeast and northwest trending faults related to the Rock Creek Graben.

# Robocop Property – Location & Infrastructure



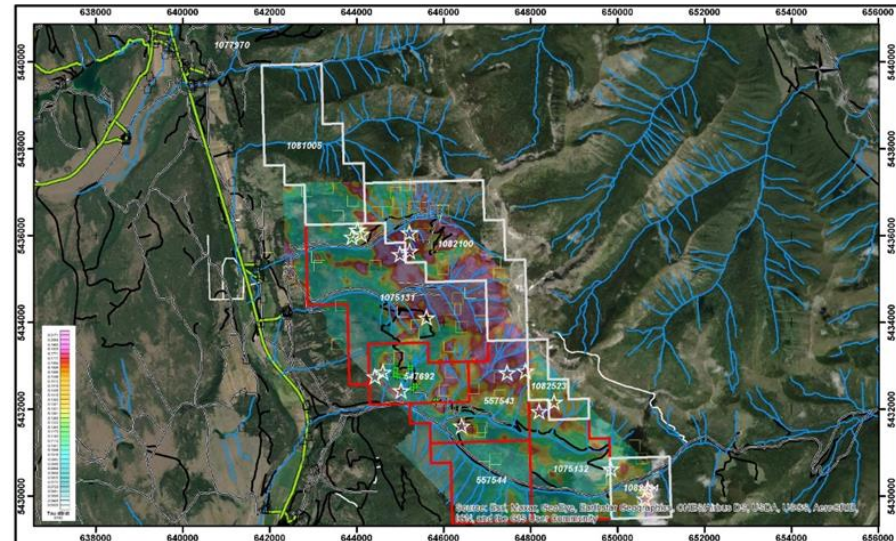
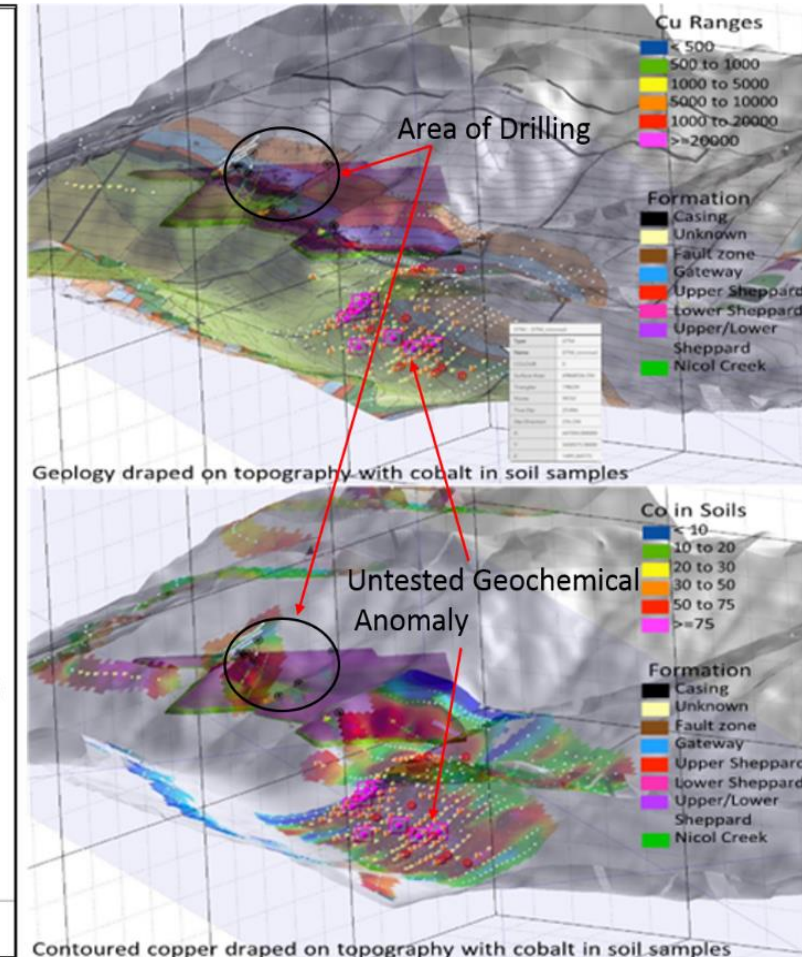
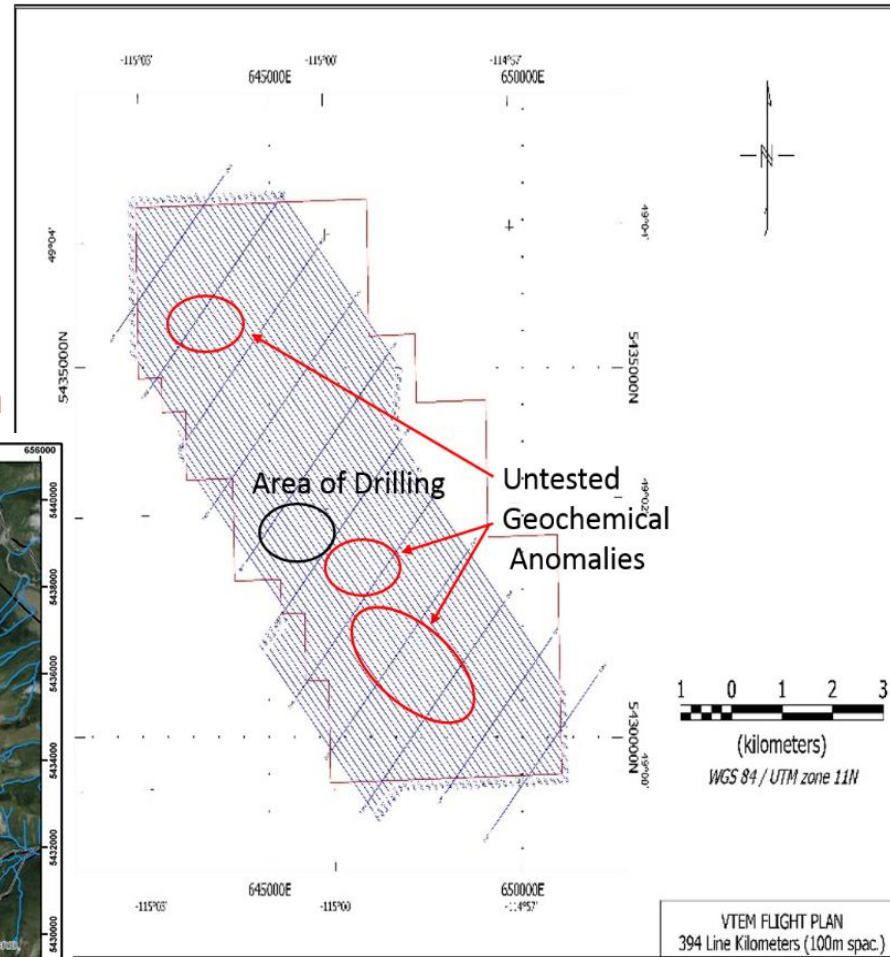
- Within the Fort Steele Mining District
- 100% owned 9,838 acres of mineral claims (9) – Recently Expanded
- Robocop can be worked 270+ days/year
- Project has existing logging roads throughout the property
- 5 km from the highway 93 and power lines – Phillipps Creek Hydro Power
- In existing mining region with over a 100-year history – East Kootenays



# Robocop Property & Planned 2021-2022-2023 Exploration



- \*Trench samples **2.67% Cu, 0.48% Co** and **1.93 % Cu, 0.06 % Co** over 6 m
- \*Historical drilling has yielded **1.04% Cu, 0.148% Co** over **2.0 m** (2.9% CuEq)
- 2021 Work program included:
  - 400 line km airborne EM survey**
  - Soil sampling program**
  - 1,000 – 2,000 m core drill program**



**GRIZZLY DISCOVERIES INC.**  
Robocop Property, Southeastern British Columbia  
VTEM EM ANOMALIES, S-FIELD (dB/dT) CONDUCTIVITY & STAKING

1:75,000  
NAD 1983 Zone 11  
APEX Geoscience Ltd.  
Edmonton, Alberta May, 2021

**Legend**  
Mineral Claims May 11, 2021  
OWNER\_NAME  
GRIZZLY DISCOVERIES INC.  
HARRIS\_COX\_NAD08L\_T21  
Robocop Drainage  
Robocop Roads  
Robocop Trails

**Legend**  
Mineral Claims May 11, 2021  
New Mineral Claims  
1082100  
1082101  
1082102  
1082103  
1082104  
1082105

**Legend**  
Robocop VTEM Anomalies  
Priority  
1  
2

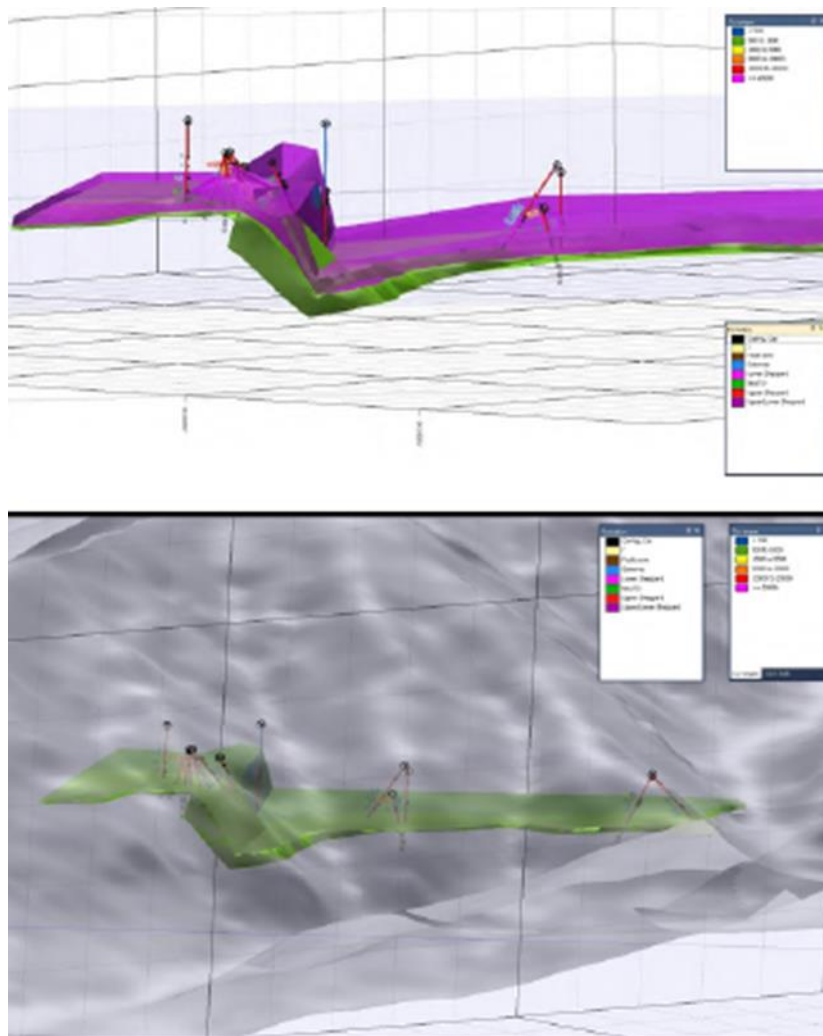
The Company is awaiting drilling permits and is in consultation with FN Groups

Micromine model of drilling showing vertical fault and east side down

# Robocop Historical Drilling



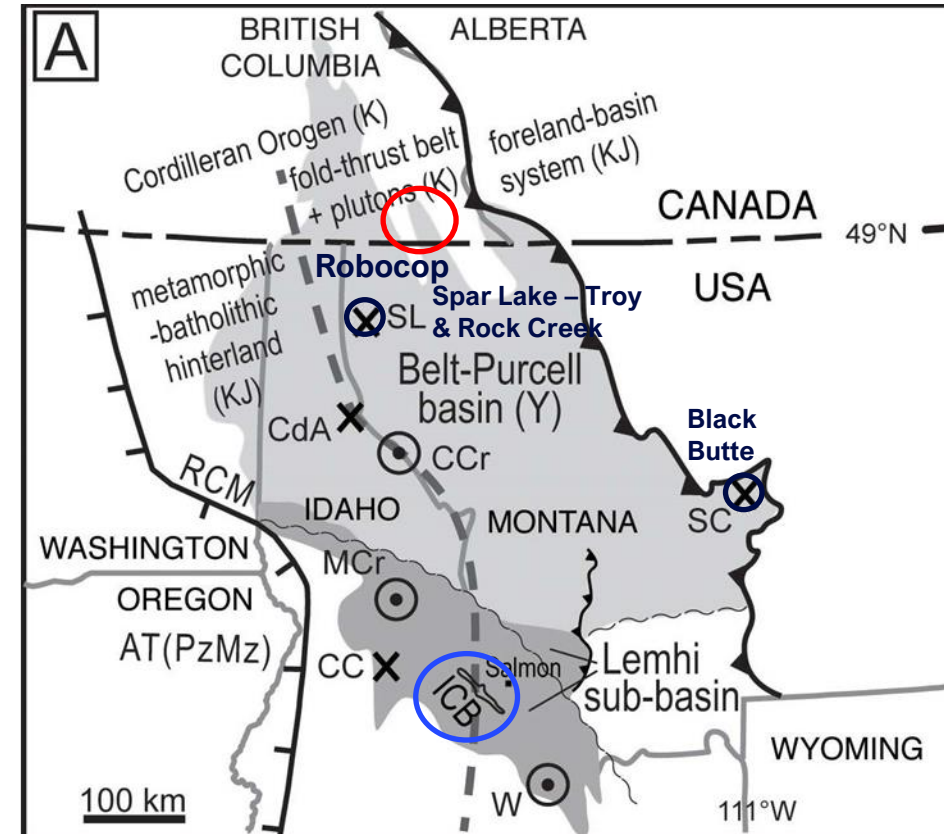
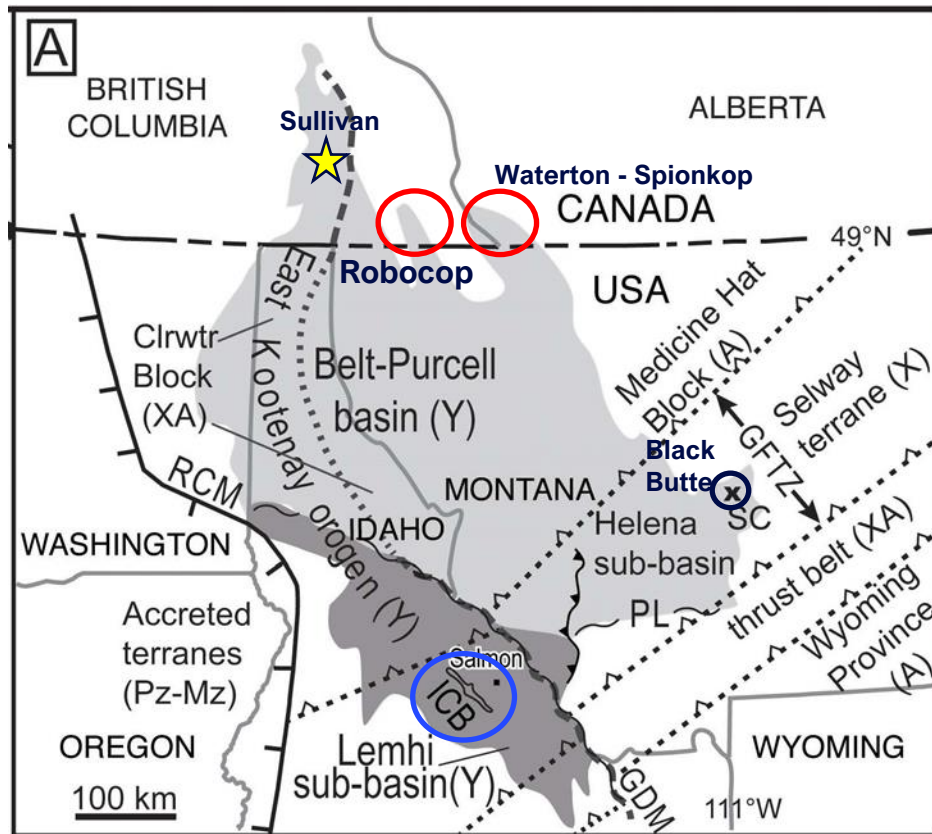
- \*Historical drilling has yielded up to **1.04% Cu, 0.148% Co over 2.0 m (2.9% CuEq)**
- Geological modelling using data from 15 historic drill holes and 325 samples returning Cu, Co, Ag, Au
- Seems to indicate significant offsets with west side down in the target Sheppard (Roo) Horizon – can be seen across the property
- A total of 15 drillholes in the 3 areas over 1.1 km strike length between 1990 and 2008 have yielded several intersections of near surface Cu-Co-Ag mineralization
- \*Grades of up to 0.134% Co, 1.19% Cu and 33.8 g/t Ag over 1.23 m core length in hole R-1990-5 and 0.14% Co, 0.9% Cu and 2.7 g/t Ag over 3.1 m core length in hole R-1990-6 (Thomson, 1990), along with an intersection of 0.18% Co, 0.28% Cu, 4.1 g/t Ag over 1 m core length in hole R-2008-02 (Pighin, 2009)



# Robocop Geology: Belt – Purcell Group Proterozoic Basin



- Sediment Hosted Copper-Cobalt-Silver in Upper Purcell Proterozoic Rocks edge of the basin
- Similar age (1,380 to 1,450 Ma) rocks and mineralization to Idaho Cobalt Belt (ICB) – Sediment hosted Cu-Co-Ag+/-Au



# Geology (Stratigraphy) & Deposits in Belt - Purcell Group

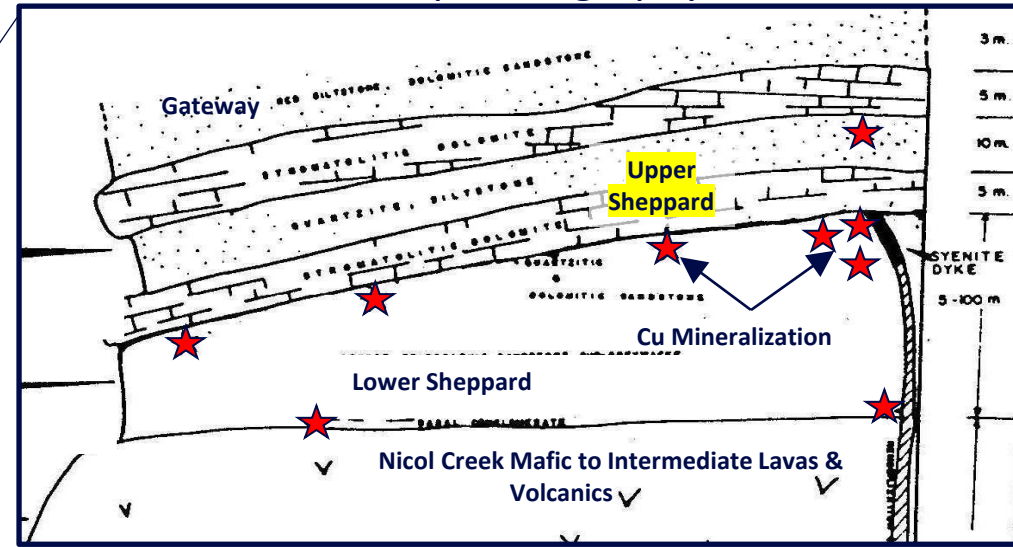


Table of Formations

	Nelson	Fernie	Montana	
Paleozoic	Hamill	Cranbrook		
Late Proterozoic	Horsthief Creek			
	Toby			
Middle Proterozoic	Mt Nelsen		Garpet Range	Missoula
		Roosville	McNamara	
		Phillips	Bonner	
	Dutch Creek	Gateway Sheppard	Mt Shields Sheppard	
		Nicol Creek	Purcell Lava	Wallace
	Siyeh	Van Creek	Snow Slip	
	Kitchener	Kitchener	Helena Empire	
		Creston	St Revis Revett Burke	Ravalli
	Aldridge	Aldridge Fort Steele	Prichard	
	Moyie Sills			

★ Sullivan Pb-Zn Deposit      ★ Cu Mineralization/Deposit

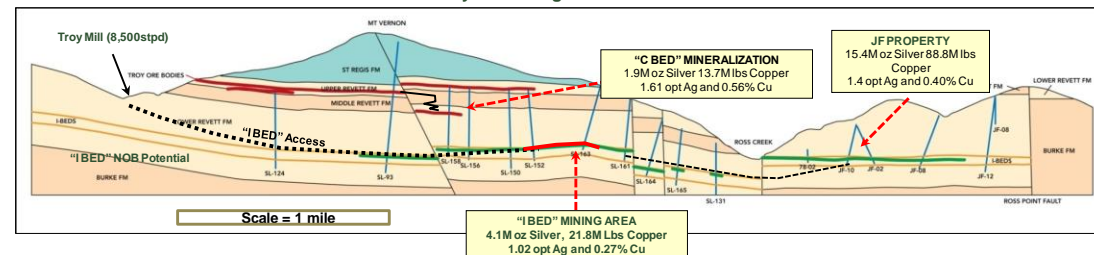
Robocop Stratigraphy



Structural & Stratigraphic Controlled Sediment Hosted Cu-Co-Ag

Jervois ICP Project, ID = M&I of 50 Mill lbs Co, 80 Mill lbs Cu, 89,000 oz Au @ 0.44% Co, 0.69% Cu, 0.53 g/t Au & Inf Resources of 12 Mill lbs Co, 15 Mill lbs Cu & 23,000 oz Au @ 0.35% Co, 0.44% Cu, 0.45 g/t Au<sup>5</sup>  
 Troy, Mt = 633,000 tons Cu, 146 Moz Ag @ 0.56% Cu & 1.32 oz/t Ag – Production and M&I Resources<sup>1,2</sup>  
 Rock Creek, Mt = Inferred Resource 1 Million tons Cu, 230 Moz Ag @ 0.72% Cu & 1.67 oz/t Ag<sup>3</sup>  
 Montanore, Mt = Inferred Resource of 759,400 tons Cu @ 0.7% and 183 Moz Ag at 1.6 oz/t Ag<sup>3</sup>

Troy Mine Long Section



Black Butte, Mt = M&I Resources of 588,000 tons Cu, 17,800 tons Co, 7 Moz Ag @ 3.41% Cu, 0.1% Co 0.44 oz/t Ag & Inf Resources of 70,000 tons Cu, 2,450 tons Co, 1 Moz Ag @ 2.81% Cu, 0.1% Co, 0.44 oz/t Ag<sup>4</sup>

Source: M. Dufresne, A. Banas, K. Salter. "Assessment Report for the Robocop Property, South-Eastern British Columbia," APEX Geoscience Ltd. Edmonton, AB, Tech. Rep. March, 2013.

1. Troy produced 216,000 tons of Cu and 53 Moz Ag 1981-93, 2005-2014. Measured & Indicated Resources remain in place of 417,000 tons Cu & 93 Moz Ag (Revett Minerals, 2011).

2. SRK, 2005 Independent Technical Report on the Rock Creek Cu-Ag Project, Montana

3. Hecla Mining Company, 2021. Montanore Inferred Mineral Resource of 759,420 tons of Cu (0.7%), 183 Moz Ag @ 1.6 oz/t ([www.hecla-mining.com](http://www.hecla-mining.com))

4. Winckers et al., 2013, "Updated technical report and preliminary economic assessment for the Black Butte Copper Project"

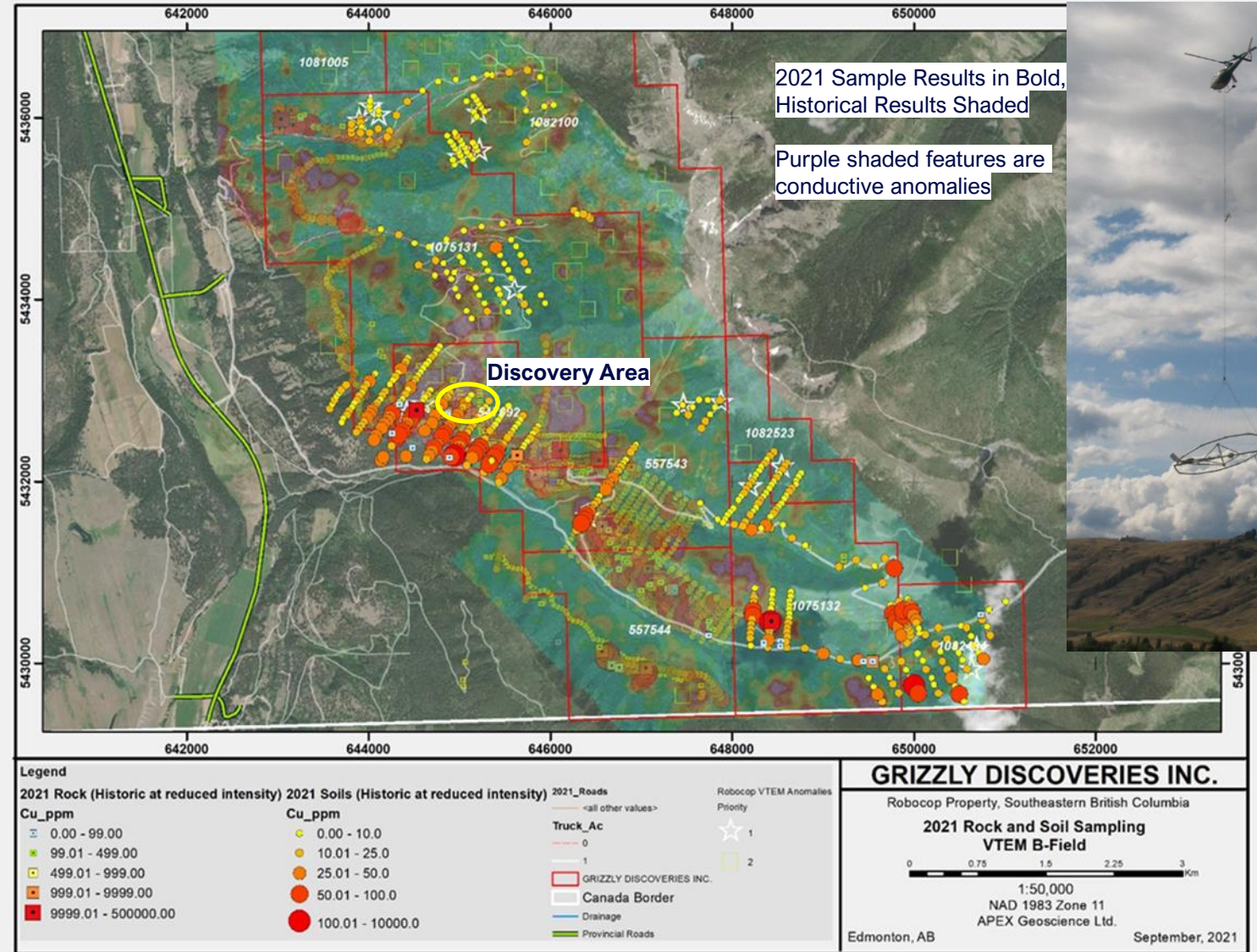
5. Sletten et al., 2020, "Feasibility Study Idaho Cobalt Operations"



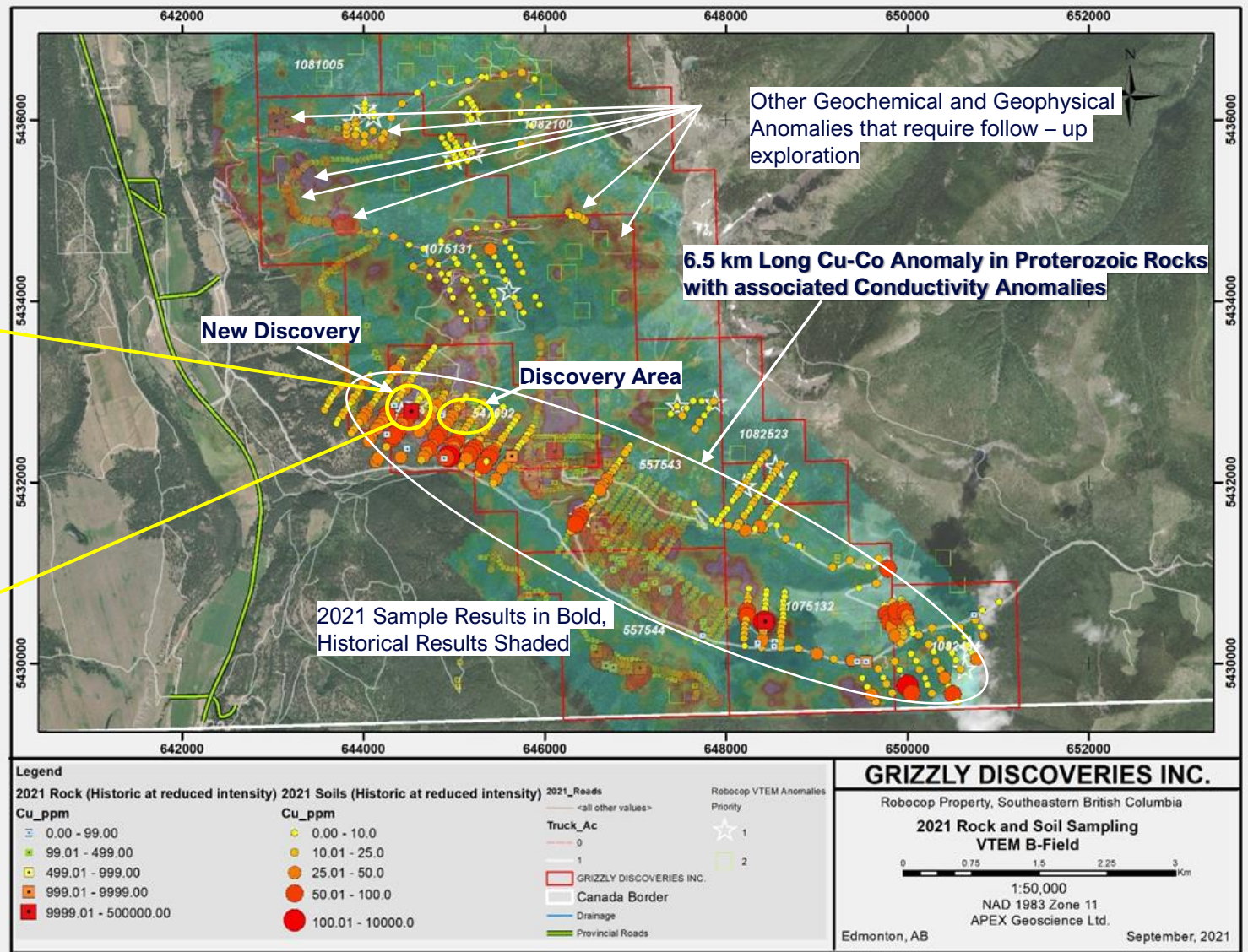
# Robocop Property – 2021 – 2022 Exploration



- \*Trench results **2.67% Cu, 0.48% Co** in grab samples and **1.93 % Cu, 0.06% Co** over 6m in channel samples
- \*Historical drilling has yielded **1.04% Cu, 0.148% Co** over 2.0m (**2.9% CuEq**)
- Geological modelling using data from 15 historic drill holes and 325 samples returning Cu, Co, Ag, Au – historical drilling predated geophysics – has not really tested geophysical anomalies
- 2021 work program to include:
  1. 400 line km VTEM airborne survey - **Completed**
  2. Phase 1 Soil sampling program focussed on VTEM anomalies - **Completed**
  3. Ground EM Survey – **To Be Completed Fall 2022**
- 1. 1,000 – 2,000 m diamond drill program – in application – **To Be Completed Fall 2022 or Spring 2023**



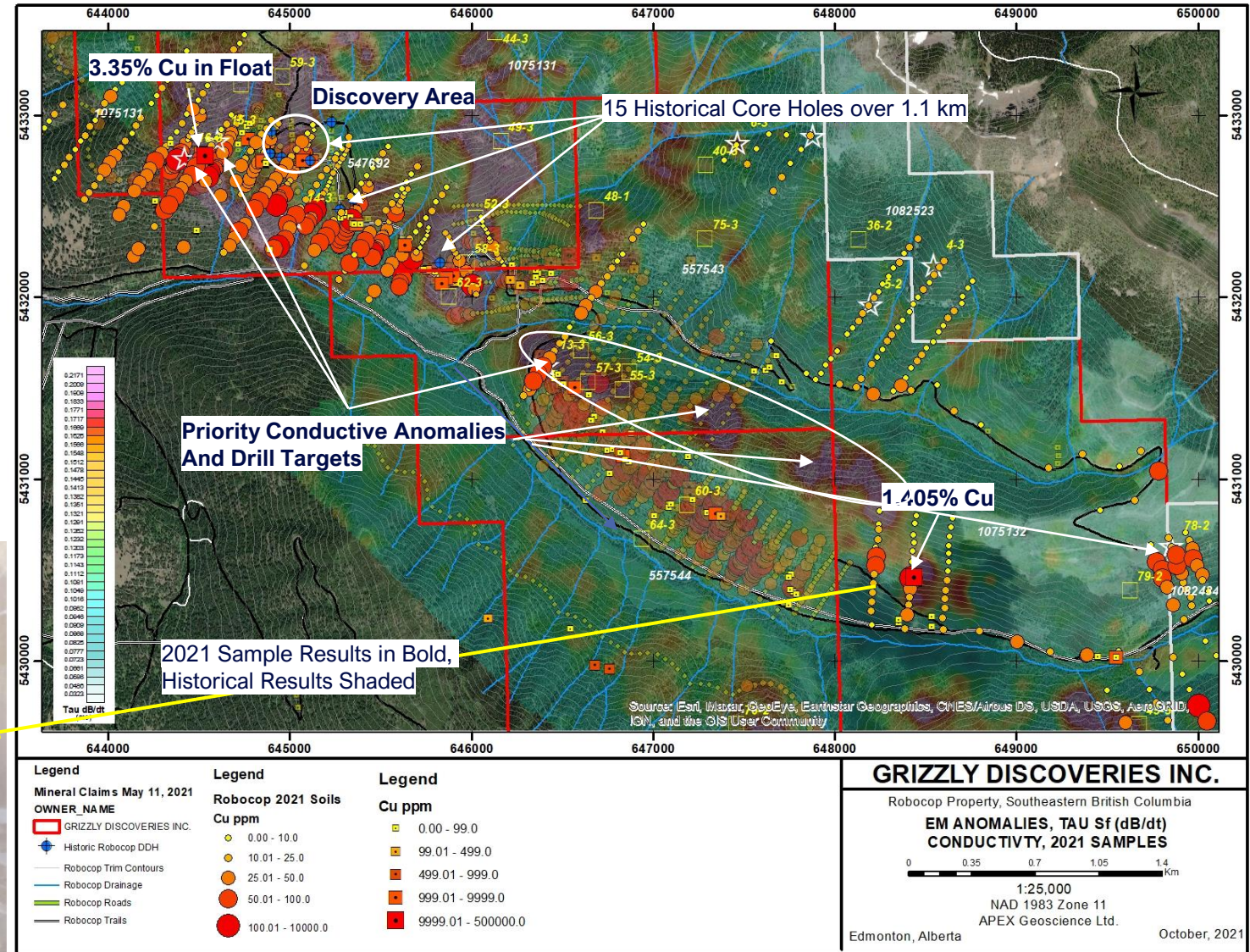
# Robocop Property – 2021-2022 Exploration



# Robocop Property – 2021-2022 Exploration



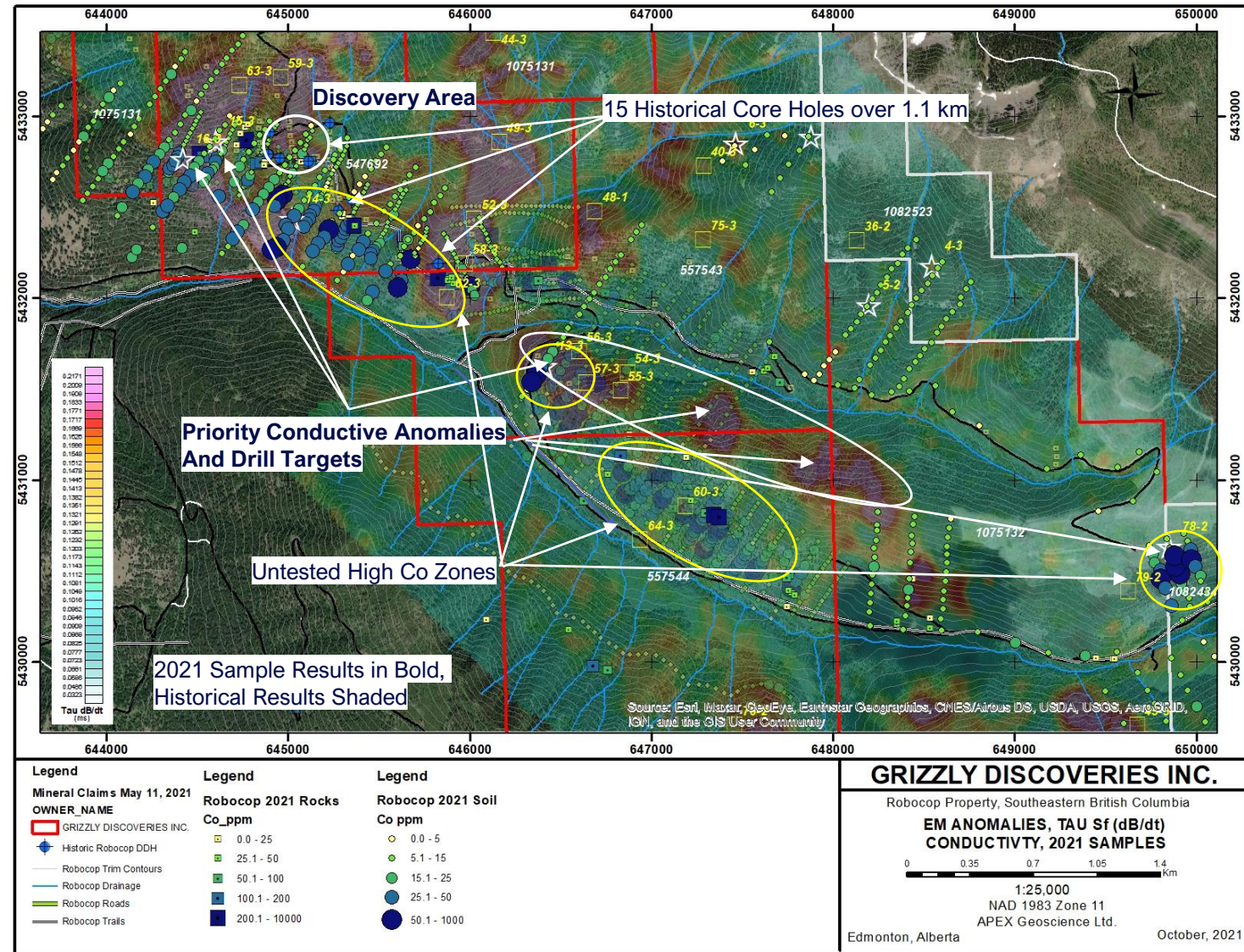
- New Rock Grab Samples with up to 3.35% and 1.405% Cu down slope from Priority Geophysical Anomalies
- Focused soil sampling down slope from Priority Geophysical Anomalies has expanded Phillipps Creek Anomaly to 6.5 km in strike length – with new zones spatially associated with EM anomalies
- Existing drilling (15 holes) has only examined 3 locations over a strike length of 1.1 km and was conducted with no geophysics to guide the drilling



# Robocop Property – 2022 Exploration



- A number of strong untested Cu-Co geochemical anomalies associated with EM anomalies potentially indicative of increased concentrations of sulphide mineralization
- Application PENDING drilling of 20 holes (10 in year 1) and in the midst of Native Consultation with Tobacco Plains FN
- Considering conducting follow-up ground geophysical surveys including but not limited to one or more of Loupe EM, TDEM Loop and/or IP surveys to provide a better focus for drill targeting of possible sulphide zones



# Use of Proceeds for Exploration 2022 - 2023



## Robocop

- A number of strong untested Cu-Co geochemical anomalies associated with EM anomalies potentially indicative of increased concentrations of sulphide mineralization
- Considering conducting follow-up ground geophysical surveys including but not limited to one or more of HLEM, TDEM Loop and/or IP surveys to provide a better focus for drill targeting of possible sulphide zones = \$50,000
- Application for drilling of 20 holes (10 in year 1) was submitted to BC Government in July, 2021; 2,000 m drill program = CDN\$500,000

## Greenwood

- Completed drilling at Motherlode (Skarn Au-Ag-Cu-Pb-Zn) and Dayton (Au-Cu Porphyry); 3,100 m drill program = CDN\$800,000
- Additional field work and ground geophysical surveys at Midway and Ket 28 along with a number of other showings; work to be conducted by GZD and joint venture partners on the order of CDN\$500,000
- Drilling being planned for 2023 for Sappho, Midway, Copper Mountain and Imperial – 5,000 to 7,000 m. CDN\$1.25 to 1.75 million



Projects & Targets with  
New Discovery Potential

# CONTACT INFORMATION



<b>Brian Testo (CEO)</b>	<b>Nancy Massicote, Corporate Development</b>	<b>Jim Greig, Director Corporate Development</b>
T: (780) 712-3559 E: info@grizzlydiscoveries.com	T: (604) 507-3377 E: info@grizzlydiscoveries.com	T: (778) 788-2745 E: jgreig@grizzlydiscoveries.com