



Grizzly Discoveries Inc.

A Canadian Exploration Company

Base (Battery) & Precious Metals in British Columbia, Canada

September, 2022

Michael Dufresne, P.Geo., President APEX Geoscience Ltd.

Forward Looking Statements



- This presentation contains certain “forward-looking statements”. Such forward-looking statements include, without limitation:
 - estimates of future capital expenditures;
 - estimates of resources and statements regarding future exploration results, timing and amount of estimated future exploration
 - success of exploration, development and production activities.
 - expenditures; permitting; and requirements for additional capital and access to data.
- Where the Company expresses or implies an expectation or belief as to future events or results, such expectation or belief is expressed in good faith and believed to have a reasonable basis. However, forward-looking statements are subject to risks, uncertainties and other factors, which could cause actual results to differ materially from future results expressed, projected or implied by such forward looking statements. Such risks include, but are not limited to metals price volatility, currency fluctuations, increased production costs and variances in ore grade or recovery rates from those assumed in mining plans, as well as political and operational risks in the countries and states in which we operate or sell product to, and governmental regulation and judicial outcomes.
- The Company does not undertake any obligation to release publicly any revisions to any “forward looking statement” to reflect events or circumstances after the date of this presentation, or to reflect the occurrence of unanticipated events, except as may be required under applicable securities laws. The following presentation does not constitute an offer to sell or solicitation of an offer to buy any securities of Grizzly Discoveries Inc.
- In addition, certain information provided in this presentation has been taken from 3rd party sources and 3rd party reports and/or presentations and has not been independently verified by the company. Readers are cautioned not to place undue reliance on such information.

Grizzly Canadian Projects



GREENWOOD PROJECTS
Gold, Copper, Silver

ROBOCOP PROJECT
Copper, Cobalt, Silver

Precious Metal & Battery Metal properties
Covering 160,000 acres

Focus on Robocop, Motherlode & Dayton
Cu-Co-Au-Ag & Ket 28 Au

Active exploration programs in fall 2020 &
summer 2021; ~\$1 million expended

Proven, prolific and historic mining jurisdiction

Full road access with logistical advantages

First Nations – Supportive & Active Partner

Potential to Joint Venture multiple projects

Management & Directors



BRIAN TESTO President, CEO, Director	DR. SOLOMON (SAM) PILLERSDORF Director	JIM GREIG Director & Corporate Development Advisor	JO PRICE, M.Sc., MBA, P.Geo Director
Mr. Testo, founder of the Company, is an Alberta-based businessman who has been involved in mineral exploration and prospecting in Alberta and British Columbia for over 25 years.	Dr. Pillersdorf has been involved in the mining sector for over 10 years, including funding start-up mining companies and sourcing and funding resource claims.	Mr. Greig holds an MBA from the University of Calgary, a BA from Carleton University and +20 years of experience in the resource sector. Selected international resource sector engagements include Keegan Resources, Brilliant Mining, Hunter-Dickinson Group, Kennecott, Breakwater Resources, McIntosh and Stantec Engineering.	Ms. Price is an independent geological consultant to junior mining and exploration companies with more than 20 years in the field. She has worked on multiple gold, poly-metallic, and graphite projects in the USA, Australia, and Canada.
	JEREMY STRAUTMAN Chief Financial Officer	MICHAEL DUFRESNE, M.Sc., P.Geol. QP & Consultant	NANCY MASSICOTTE Corporate Development
	Mr. Strautman, is a graduate of the Northern Alberta Institute of Technology's Bachelor of Business Administration (Accounting) and has been involved in accounting and management for the junior mineral exploration industry since 2005.	Mr. Dufresne is a partner with APEX Geoscience Ltd., an established geological consulting company. His experience of 38 years includes diamonds, gold, base and specialty metal exploration in Alberta, B.C., Nunavut, NWT, Yukon, Eastern Canada, USA, South America and Australia.	Nancy Massicotte is the President of IR Pro Communications Inc. She has been involved in the investor relations/public relations field for over twenty-two years, working with companies in various sectors such as technology, telecommunications, bio-tech, oil and gas and mining.

Capital Structure



As of 2022 Q3

Share Structure

Shares O/S:	131 Million
Warrants/Options:	49.2 Million
Shares FD:	180.2 Million

Working Capital

Treasury:	\$1.86 Million
Share Price:	\$0.10
52-week High/Low:	\$0.11/\$0.03
Market Cap:	\$13.7 Million

Share Ownership

Management:	22.5%
Friends & Associates:	40.0%
Retail:	37.5%

All as at Apr 30, 2022 other than Share Price and Market Cap which is as at Sep 8, 2022

TSX-V: GZD - FWB: G6H - OTCQB: GZDIF

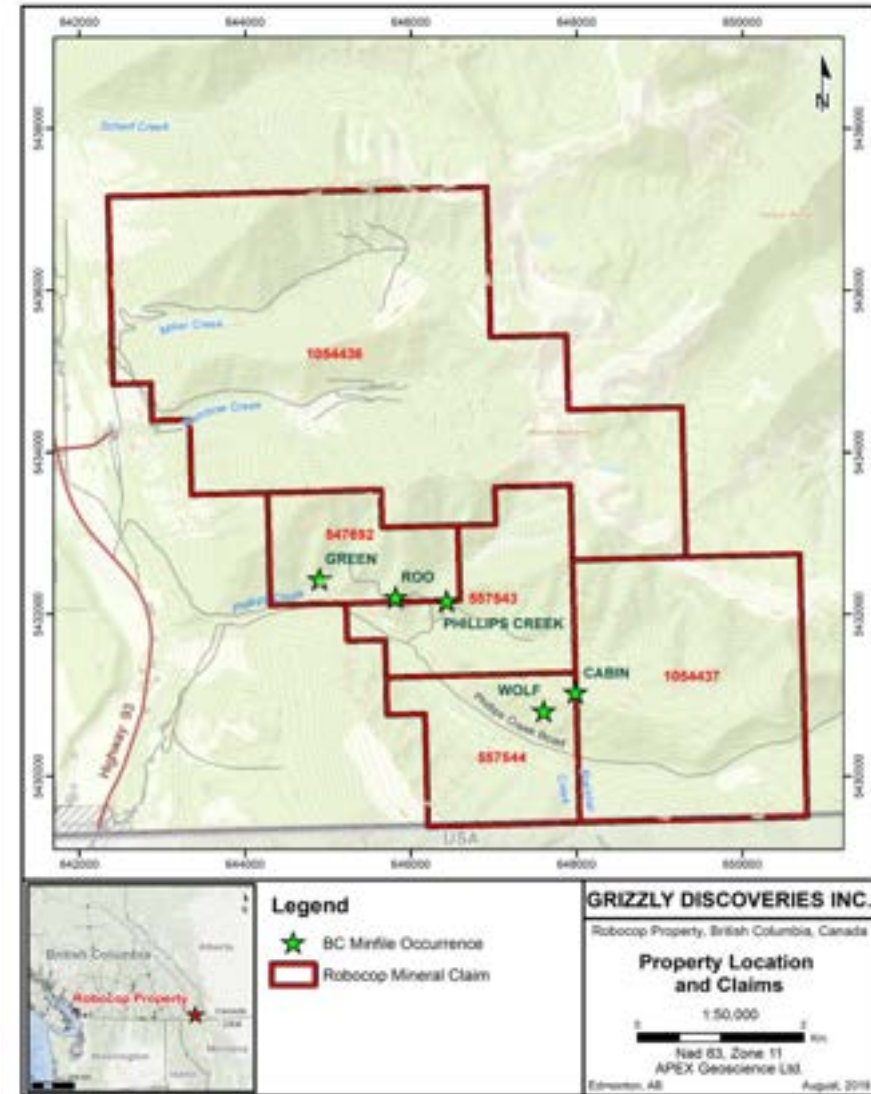


Source Stockwatch. March 15, 2020 – March 15, 2022

Robocop Property – Location & Infrastructure



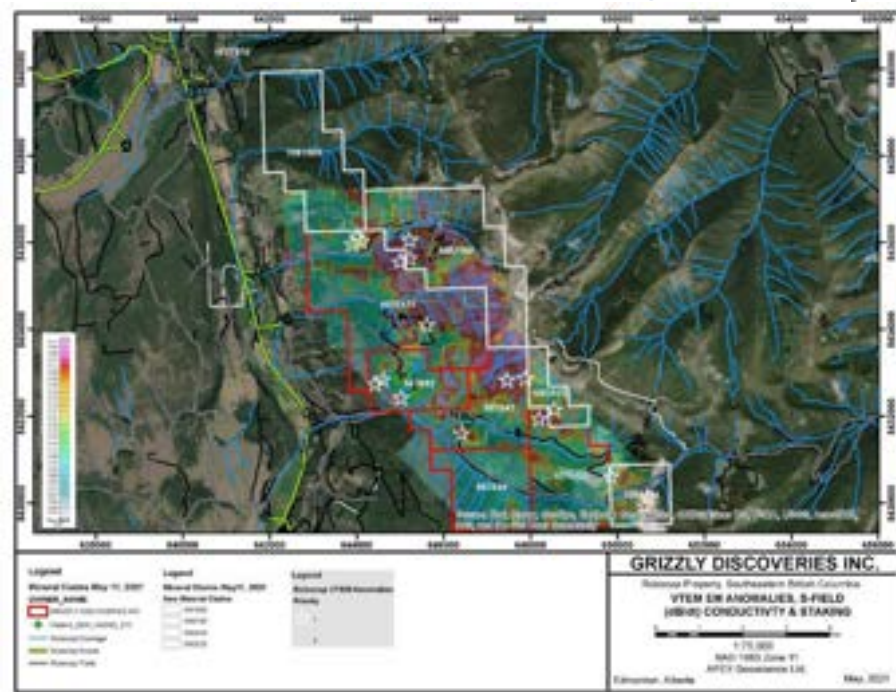
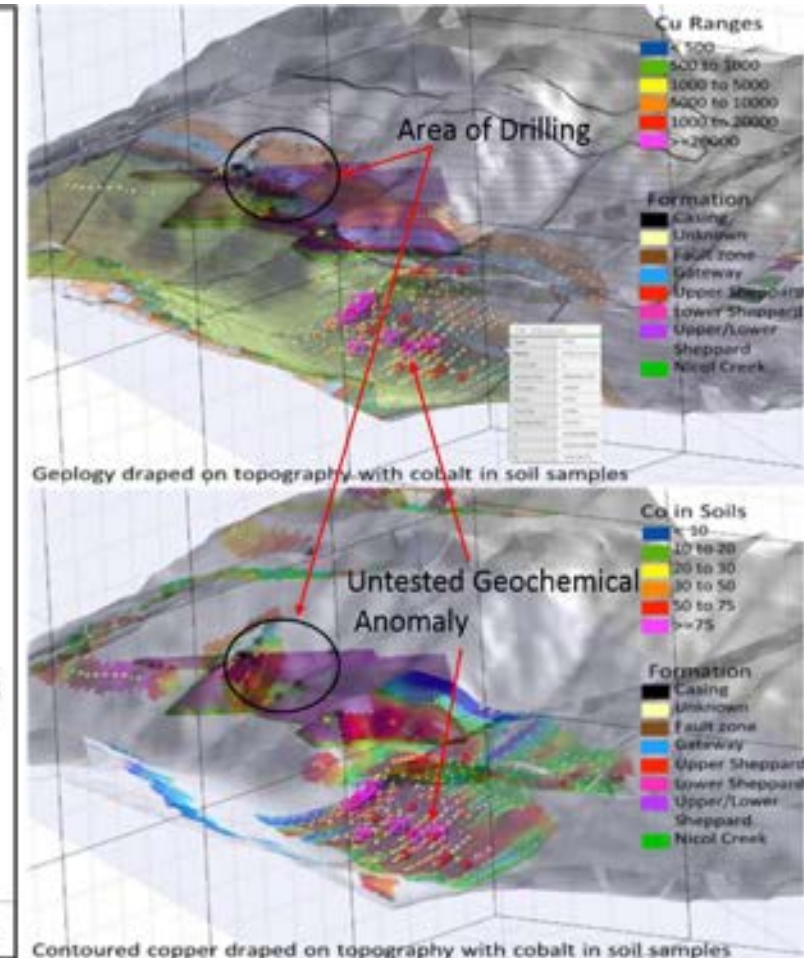
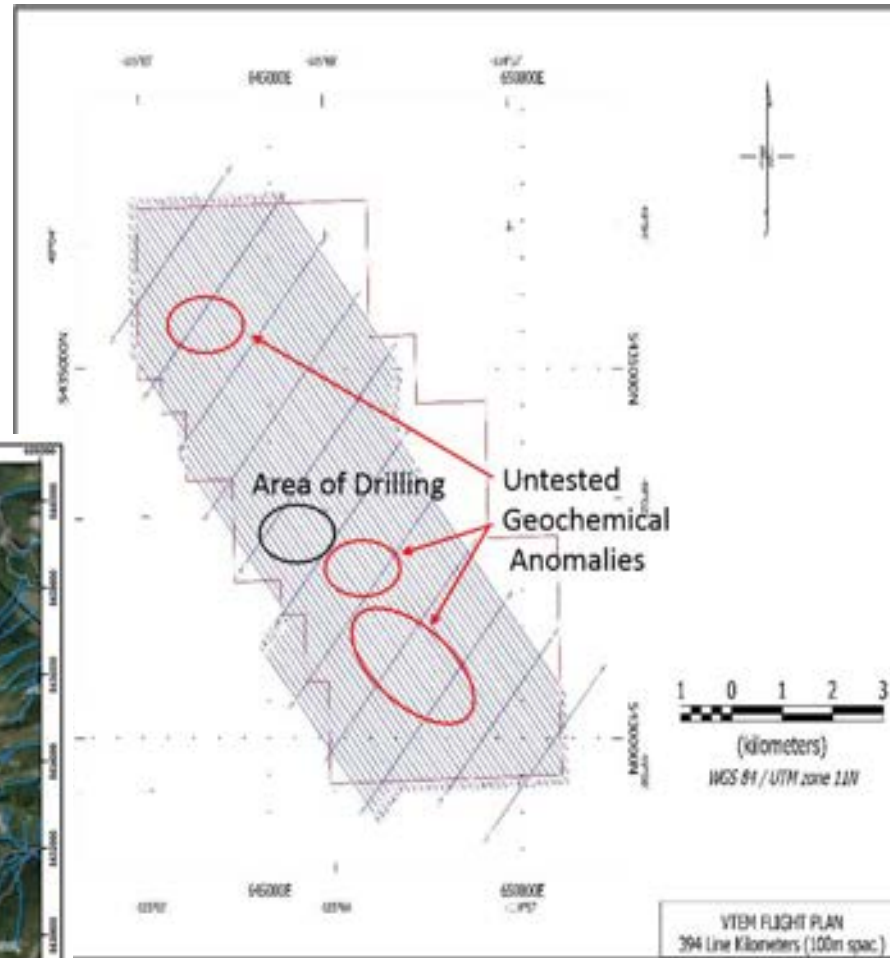
- Within the Fort Steele Mining District
- 100% owned 9,838 acres of mineral claims (9) – Recently Expanded
- Robocop can be worked 270+ days/year
- Project has existing logging roads throughout the property
- 5 km from the highway 93 and power lines – Phillipps Creek Hydro Power
- In existing mining region with over a 100-year history – East Kootenays



Robocop Property & Planned 2021 Exploration



- *Trench samples **2.67% Cu, 0.48% Co** and **1.93 % Cu, 0.06 % Co** over 6 m
- *Historical drilling has yielded **1.04% Cu, 0.148% Co** over **2.0 m** (2.9% CuEq)
- 2021 Work program expected to include:
 - 400 line km airborne EM survey**
 - Soil sampling program**
 - 1,000 – 2,000 m core drill program

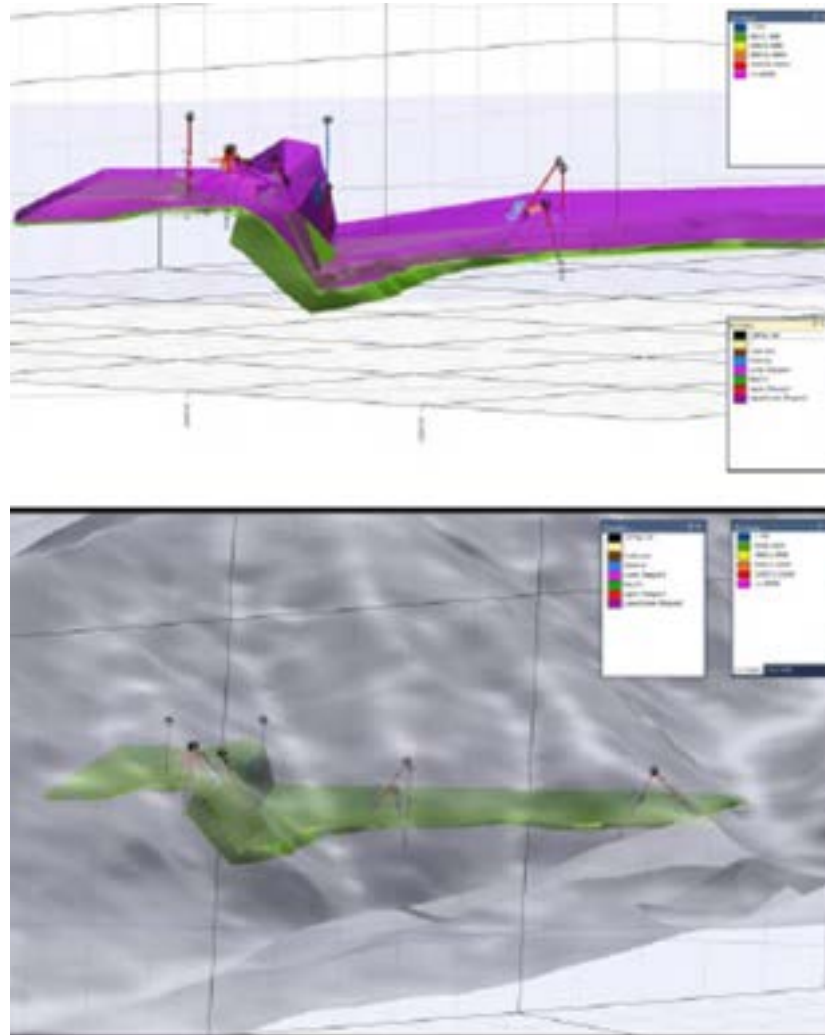


Micromine model of drilling showing vertical fault and east side down

Robocop Historical Drilling



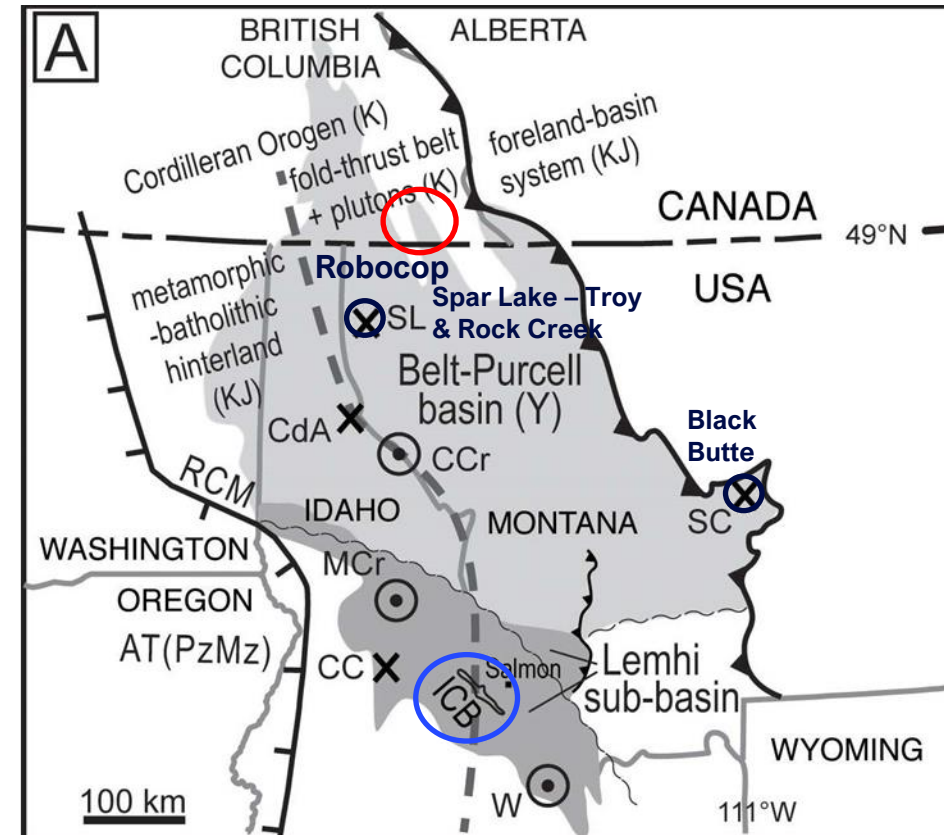
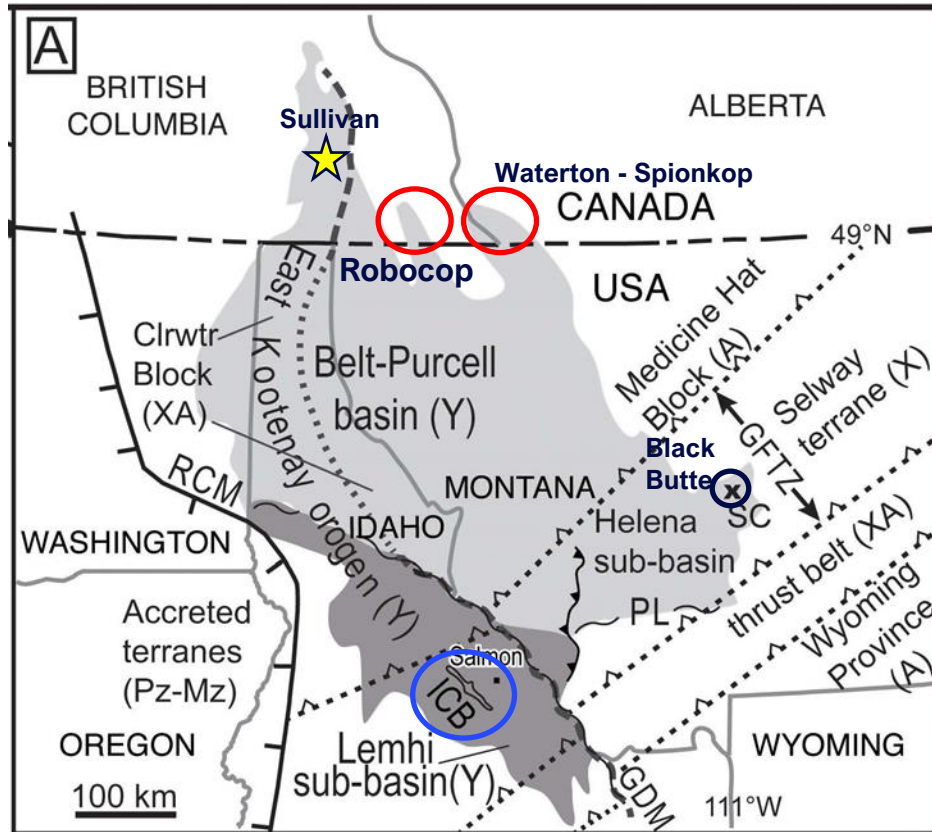
- *Historical drilling has yielded up to **1.04% Cu, 0.148% Co over 2.0 m (2.9% CuEq)**
- Geological modelling using data from 15 historic drill holes and 325 samples returning Cu, Co, Ag, Au
- Seems to indicate significant offsets with west side down in the target Sheppard (Roo) Horizon – can be seen across the property
- A total of 15 drillholes in the 3 areas over 1.1 km strike length between 1990 and 2008 have yielded several intersections of near surface Cu-Co-Ag mineralization
- *Grades of up to 0.134% Co, 1.19% Cu and 33.8 g/t Ag over 1.23 m core length in hole R-1990-5 and 0.14% Co, 0.9% Cu and 2.7 g/t Ag over 3.1 m core length in hole R-1990-6 (Thomson, 1990), along with an intersection of 0.18% Co, 0.28% Cu, 4.1 g/t Ag over 1 m core length in hole R-2008-02 (Pighin, 2009)



Robocop Geology: Belt – Purcell Group Proterozoic Basin



- Sediment Hosted Copper-Cobalt-Silver in Upper Purcell Proterozoic Rocks edge of the basin
- Similar age (1,380 to 1,450 Ma) rocks and mineralization to Idaho Cobalt Belt (ICB) – Sediment hosted Cu-Co-Ag+/-Au



Geology (Stratigraphy) & Deposits in Purcell Group

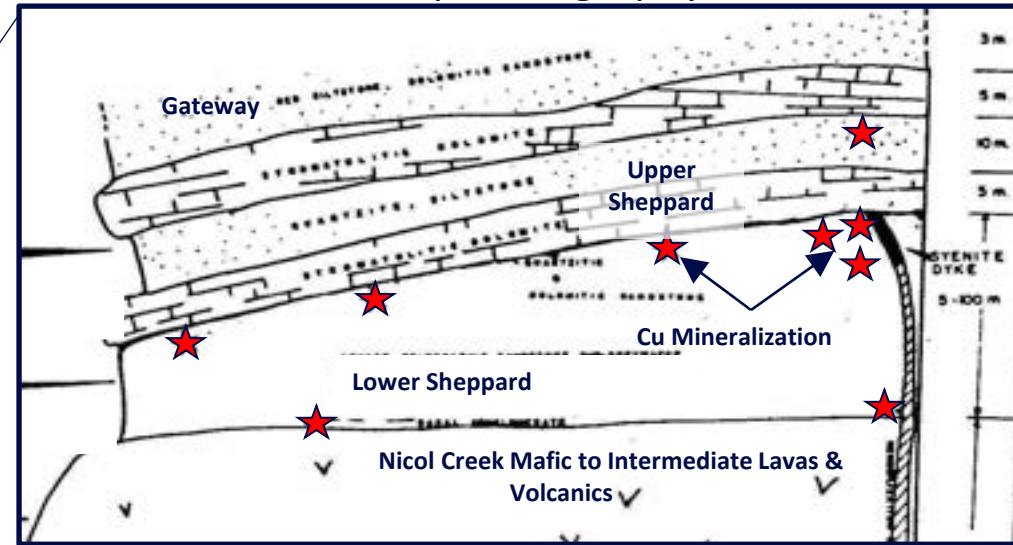


Table of Formations

	Nelson	Fernie	Montana		
Paleozoic	Hamill	Cranbrook			
Late Proterozoic	Horsthief	Dashed line			
	Creek				
Middle Proterozoic	Toby				
	Dashed line			Missoula	
		Mt Nelsen			Garnet Range
			Roosville		McNamara
			Phillips	Bonner	Wallace
	Dutch Creek	Gateway	Mt Shields		
		Sheppard	Sheppard		
	Siyeh	Nicol Creek	Purcell Lava	Ravalli	
		Van Creek	Snow Slip		
	Kitchener	Kitchener	Helena Empire		
Creston	Creston	St Revis Revett Burke			
Aldridge	Aldridge	Prichard			
Moyie Sills	Fort Steele				

★ Sullivan Pb-Zn Deposit ★ Cu Mineralization/Deposit

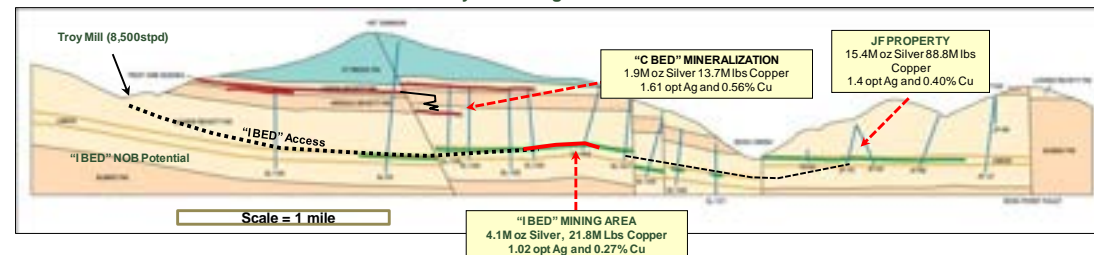
Robocop Stratigraphy



Structural & Stratigraphic Controlled Sediment Hosted Cu-Co-Ag

Jervois ICP Project, ID = M&I of 50 Mill lbs Co, 80 Mill lbs Cu, 89,000 oz Au @ 0.44% Co, 0.69% Cu, 0.53 g/t Au & Inf Resources of 12 Mill lbs Co, 15 Mill lbs Cu & 23,000 oz Au @ 0.35% Co, 0.44% Cu, 0.45 g/t Au⁵
 Troy, Mt = 633,000 tons Cu, 146 Moz Ag @ 0.56% Cu & 1.32 oz/t Ag – Production and M&I Resources^{1,2}
 Rock Creek, Mt = Inferred Resource 1 Million tons Cu, 230 Moz Ag @ 0.72% Cu & 1.67 oz/t Ag³
 Montanore, Mt = Inferred Resource of 759,400 tons Cu @ 0.7% and 183 Moz Ag at 1.6 oz/t Ag³

Troy Mine Long Section



Black Butte, Mt = M&I Resources of 588,000 tons Cu, 17,800t Co, 7 Moz Ag @ 3.41% Cu, 0.1% Co 0.44 oz/t Ag & Inf Resources of 70,000 tons Cu, 2,450 tons Co, 1 Moz Ag @ 2.81% Cu, 0.1% Co, 0.44 oz/t Ag⁴

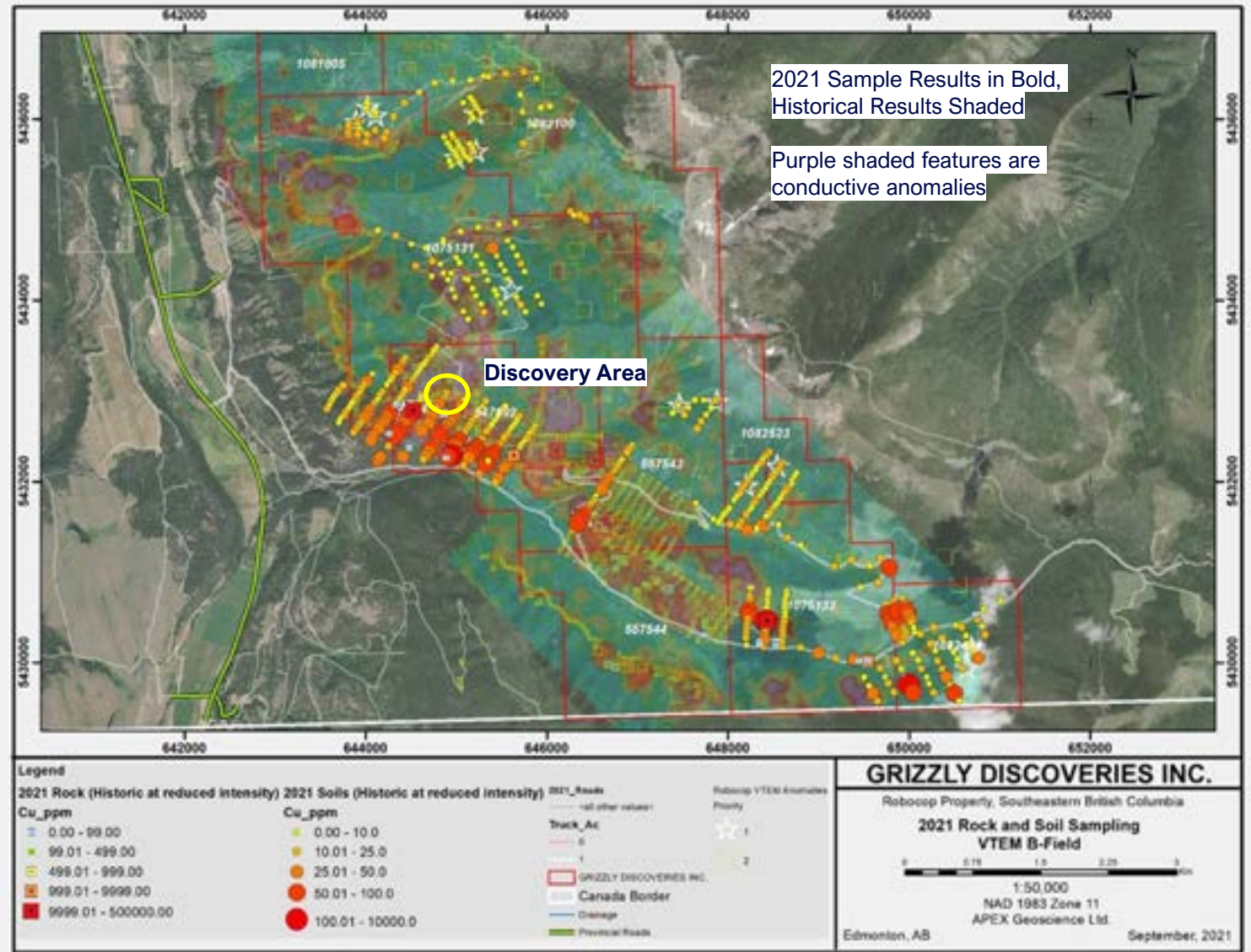
Source: M. Dufresne, A. Banas, K. Salter. "Assessment Report for the Robocop Property, South-Eastern British Columbia," APEX Geoscience Ltd. Edmonton, AB, Tech. Rep. March. 2013.
 1. Troy produced 216,000 tons of Cu and 53 Moz Ag 1981-93, 2005-2014. Measured & Indicated Resources remain in place of 417,000 tons Cu & 93 Moz Ag (Revett Minerals, 2011).
 2. SRK, 2005 Independent Technical Report on the Rock Creek Cu-Ag Project, Montana
 3. Hecla Mining Company, 2021. Montanore Inferred Mineral Resource of 759,420 tons of Cu (0.7%), 183 Moz Ag @ 1.6 oz/t (www.hecla-mining.com)
 4. Winckers et al., 2013, "Updated technical report and preliminary economic assessment for the Black Butte Copper Project"

5. Sletten et al., 2020, "Feasibility Study Idaho Cobalt Operations"

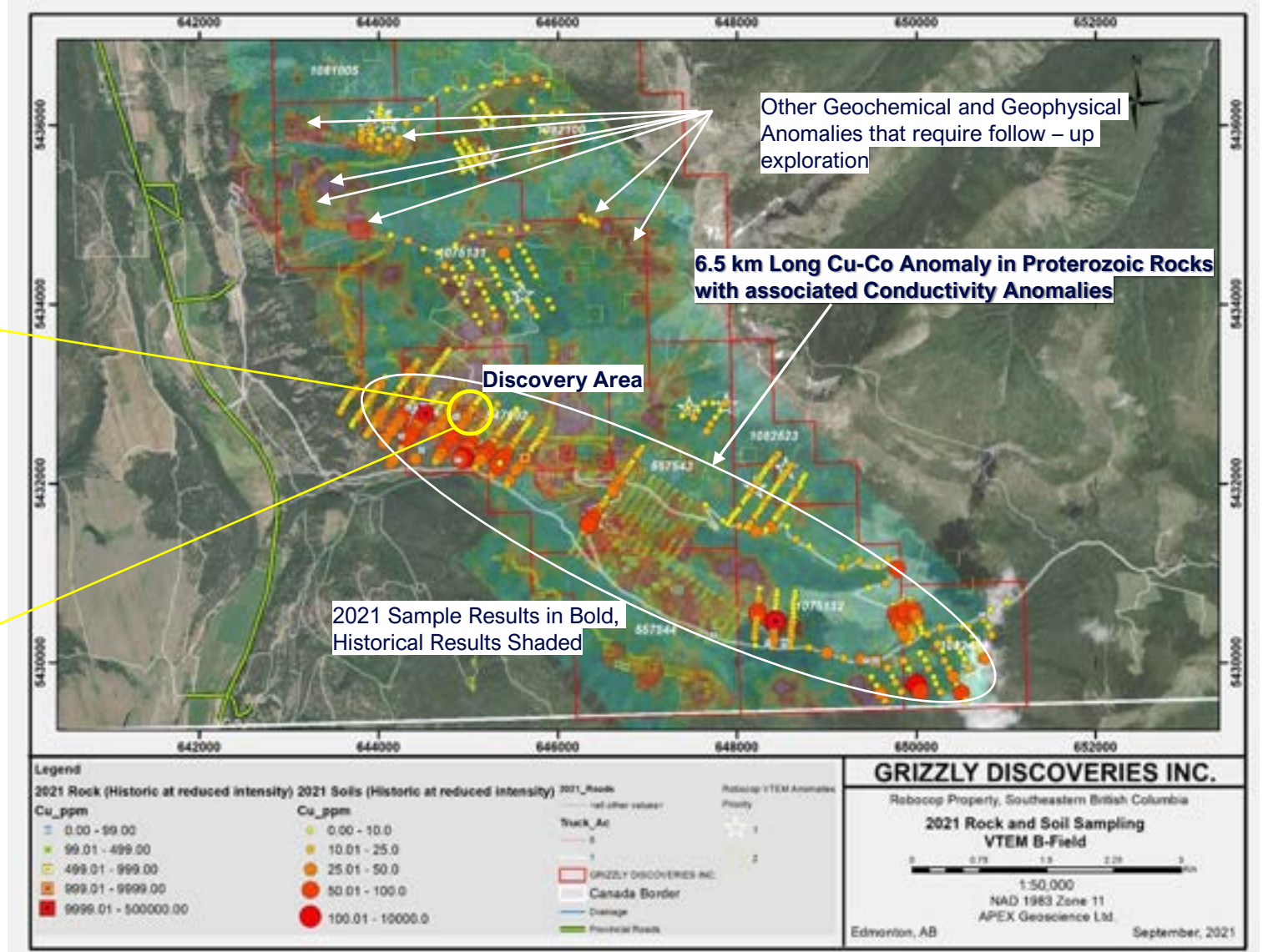
Robocop Property – 2021 Exploration



- *Trench results **2.67% Cu, 0.48% Co** in grab samples and **1.93 % Cu, 0.06% Co over 6m** in channel samples
- *Historical drilling has yielded **1.04% Cu, 0.148% Co over 2.0m (2.9% CuEq)**
- Geological modelling using data from 15 historic drill holes and 325 samples returning Cu, Co, Ag, Au – historical drilling predated geophysics – has not really tested geophysical anomalies
- 2021 work program to include:
 1. 400 line km VTEM airborne survey - **Completed**
 2. Phase 1 Soil sampling program focussed on VTEM anomalies - **Completed**
 3. 1,000 – 2,000 m diamond drill program – in application and raising funds – **To Be Completed**



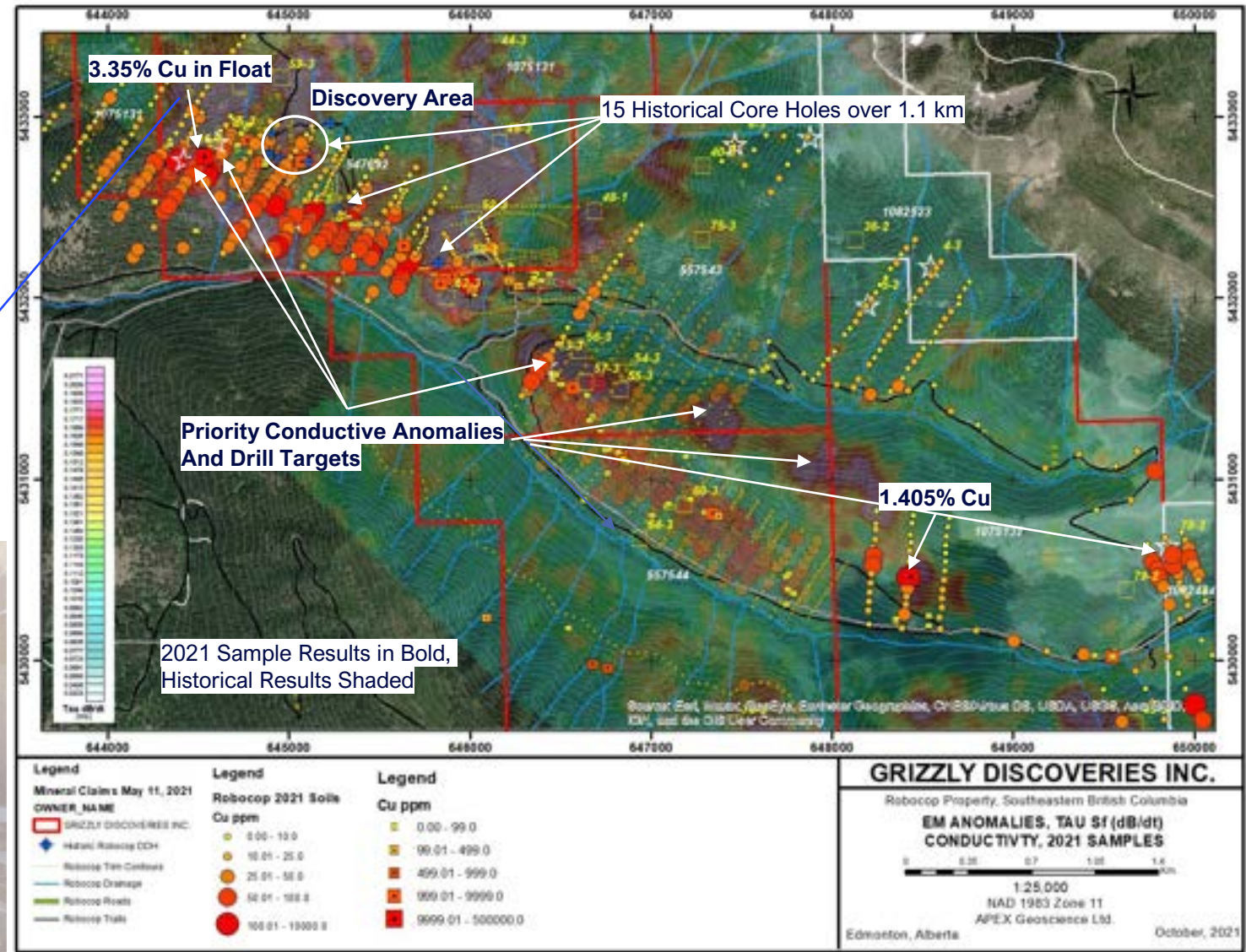
Robocop Property – 2021 Exploration



Robocop Property – 2021 Exploration



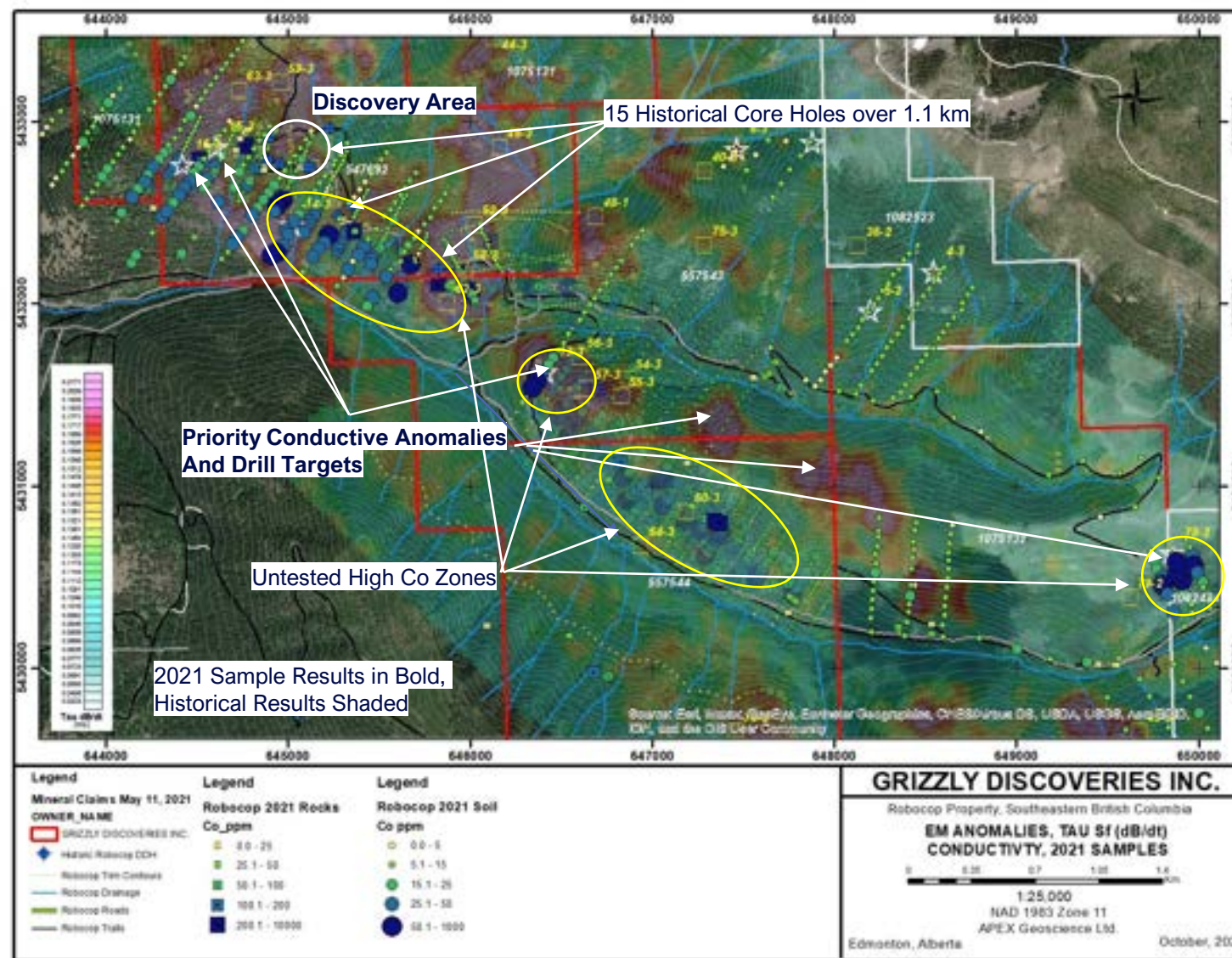
- New Rock Grab Samples with up to 3.35% and 1.405% Cu down slope from Priority Geophysical Anomalies
- Focused soil sampling down slope from Priority Geophysical Anomalies has expanded Phillipps Creek Anomaly to 6.5 km in strike length – with new zones spatially associated with EM anomalies
- Existing drilling (15 holes) has only examined 3 locations over a strike length of 1.1 km and was conducted with no geophysics to guide the drilling



Robocop Property – 2021 Exploration



- A number of strong untested Cu-Co geochemical anomalies associated with EM anomalies potentially indicative of increased concentrations of sulphide mineralization
- Application for drilling of 20 holes (10 in year 1) was submitted to BC Government in July, 2021
- Considering conducting follow-up ground geophysical surveys including but not limited to one or more of HLEM, TDEM Loop and/or IP surveys to provide a better focus for drill targeting of possible sulphide zones



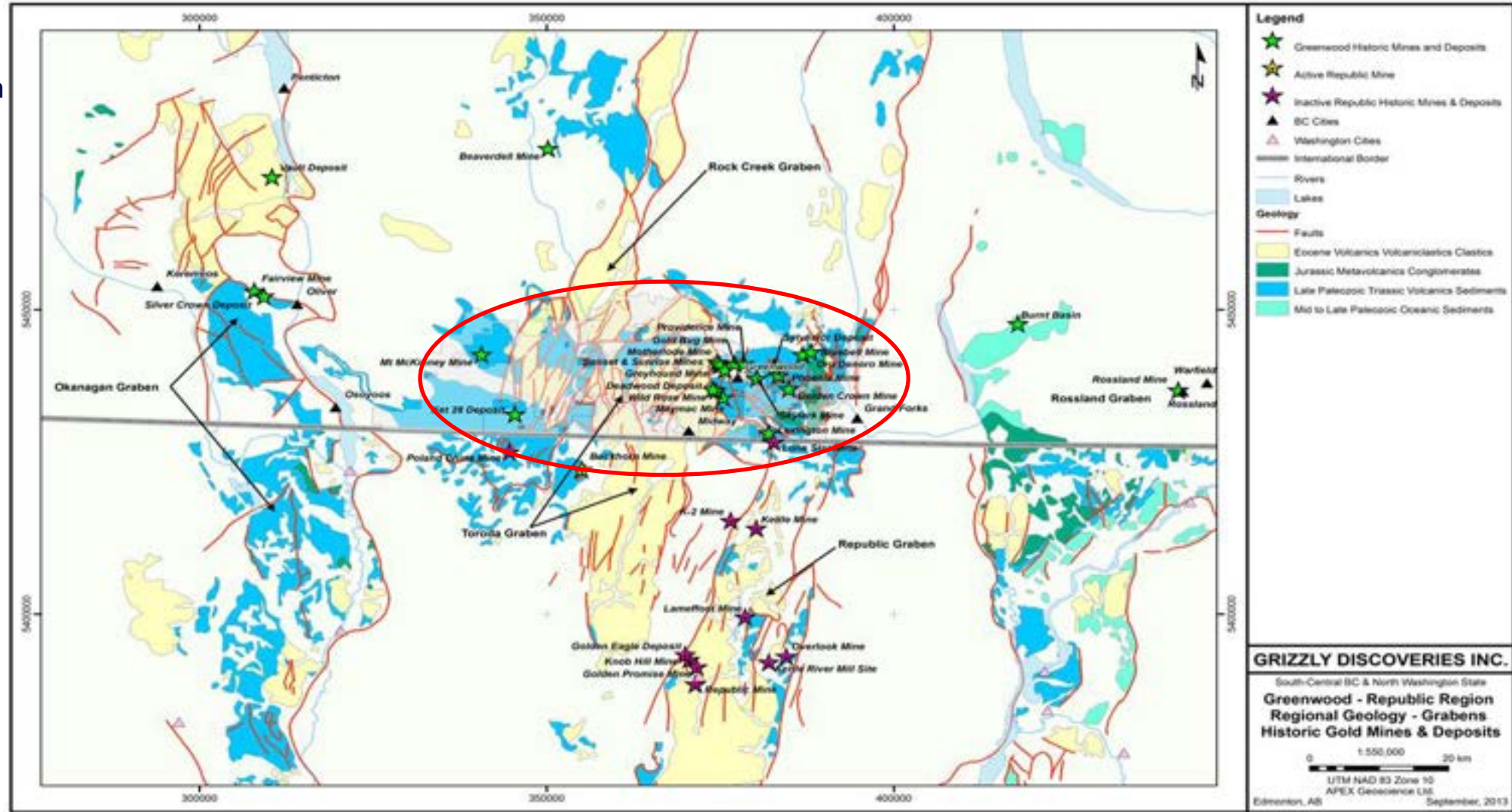
GREENWOOD POTENTIAL FOR BATTERY METALS



Paleozoic Grabens – Good Setting for Skarn & Porphyry's



- Fault bounded Tertiary grabens bordered by high grade metamorphic terranes
- West edge NA Paleozoic to Triassic volcanics (basalt) & sediments (in blues)
- intruded by 4 ages of intrusives; Triassic, Jurassic, Cretaceous and Tertiary - overlain & cut by Tertiary volcanics (in yellow)



Greenwood Properties – Precious & Base (Battery) Metals



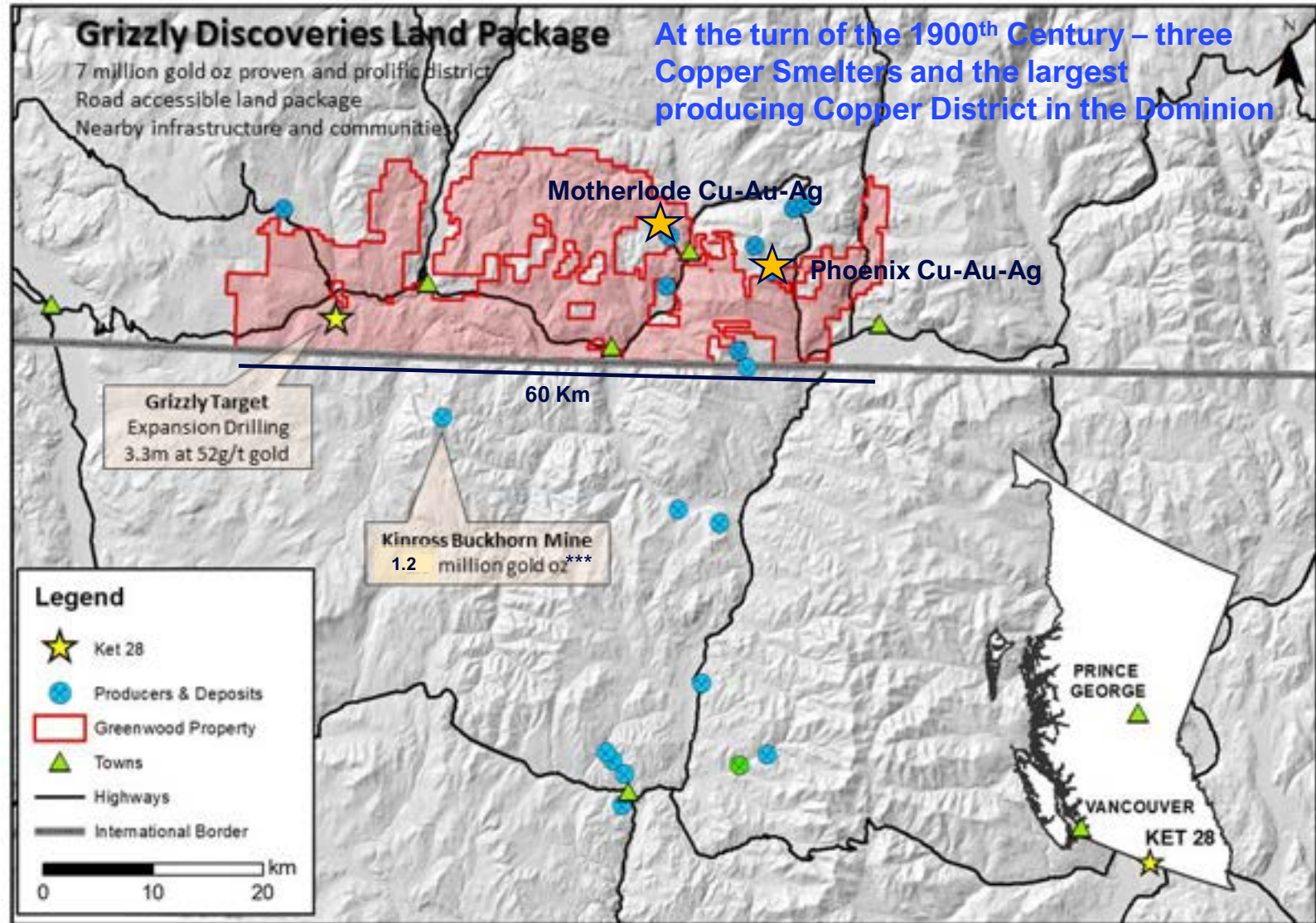
150,000 acres
~60 km x ~27 km
Contiguous land package

Gold – Silver - Copper
producing jurisdiction along
Canada-USA border

The District collectively
produced more than 7
million gold ounces*

13 km from Kinross’s 1.2
million oz*** Buckhorn Gold
Mine (1.2m oz Au produced,
avg grade 13 g/t)

50km from Fiore’s Golden
Eagle mine with 2M+ oz gold
resource**



*Source: M. Dufresne, A. Banas, K. Salter. "Assessment Report for the Robocop Property, South-Eastern British Columbia," APEX Geoscience Ltd. Edmonton, AB, Tech. Rep. March, 2013.

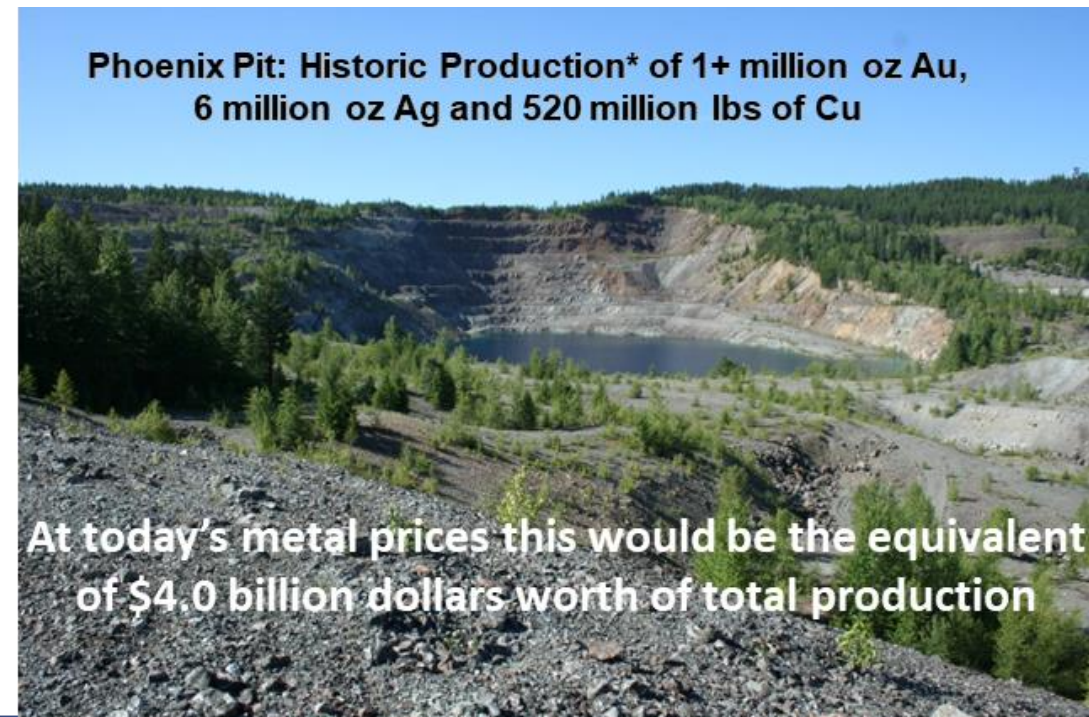
**Source: E. Chapman, T. Seal, "Golden Eagle Project, Washington State, USA", Snowden Group, Tech. Rep. July, 2009

***Source: Kinross Gold production of gold from 2008 – 2017, Kinross Annual Reports

Deposit Types & Conceptual Targets (Battery & Precious Metals)



- **Cu-Au-Ag or Au-Ag Skarns** – Intermediate to large tonnage targets, low grades to high grades ie Phoenix 27 Mt @ 1% Cu & 1 g/t Au (a \$4.0 billion dollar target) and Motherlode 4.2 Mt @ 0.82% Cu, 1.27 g/t Au & 5 g/t Ag (a \$0.5 to 1.0 billion target); GZD targeting Motherlode and Motherlode North
- **Epithermal Au-Ag Veins** - High grade, small to intermediate tonnage targets ie Knob Hill (2 million oz Au @ 20 g/t, Golden Promise 500,000 oz Au @ 24 g/t, Kettle River, Emmanuel Creek, K2; also low grade bulk tonnage ie Golden Eagle 33 Mt @ 2 g/t Au (\$2.5 billion dollar target) – Golden Crown Greenwood
- **Au-Cu-Ag Sulphide Bodies** - Rossland type (mesothermal) veins/bodies (VMS? bodies) high grade small tonnage - Lamfoot, Wild Rose, Lexington, Sylvestor K
- **Cu-Au-Ag ± PGE's in Mesozoic Alkalic Porphyry's** – low grade and very large bulk tonnage targets – GZD targeting Dayton & Sappho; Dayton DDH returned 0.4% CuEq** over 51 m and a Sappho DDH returned 0.38% CuEq** over 63.5 m both near surface intersections



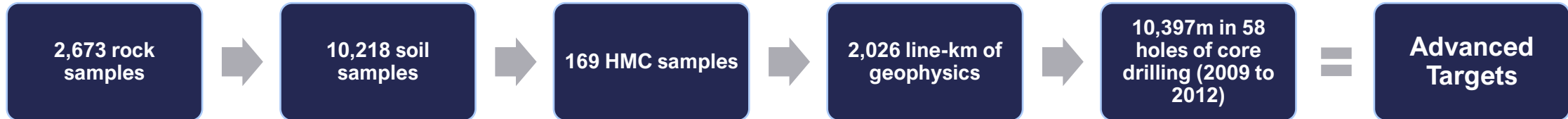
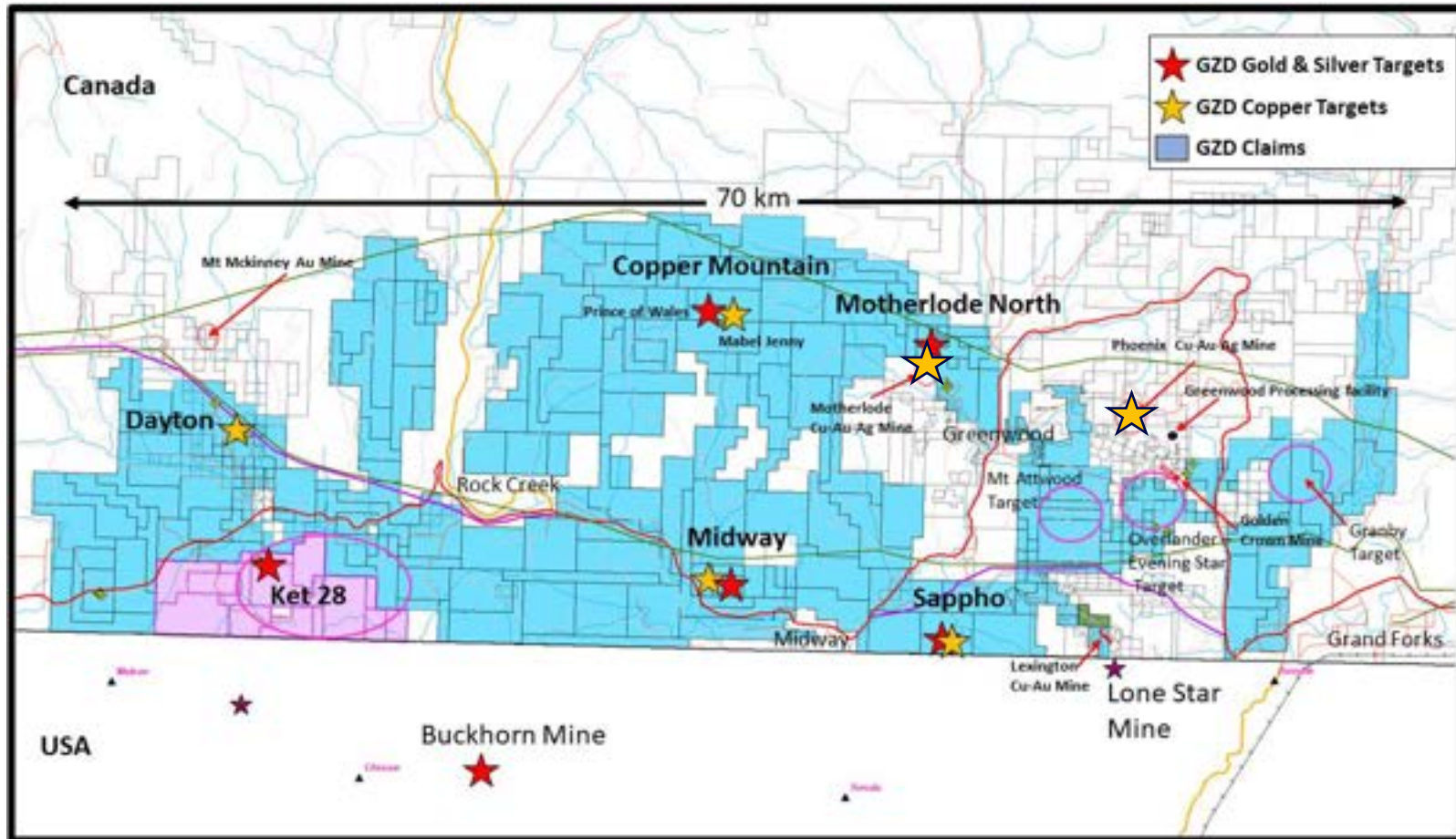
Phoenix Pit: Historic Production* of 1+ million oz Au, 6 million oz Ag and 520 million lbs of Cu

At today's metal prices this would be the equivalent of \$4.0 billion dollars worth of total production

*Production report from BCMEMPR Minfile Report; The past production has not been verified by the Company

** Cu Eq calculated using \$1800/oz Au, \$25/oz Ag and \$4.50/lb Cu, \$1000/oz Pt, \$1800/oz Pd

Greenwood Claim Groups



Motherlode/Motherlode North – Historical Exploration

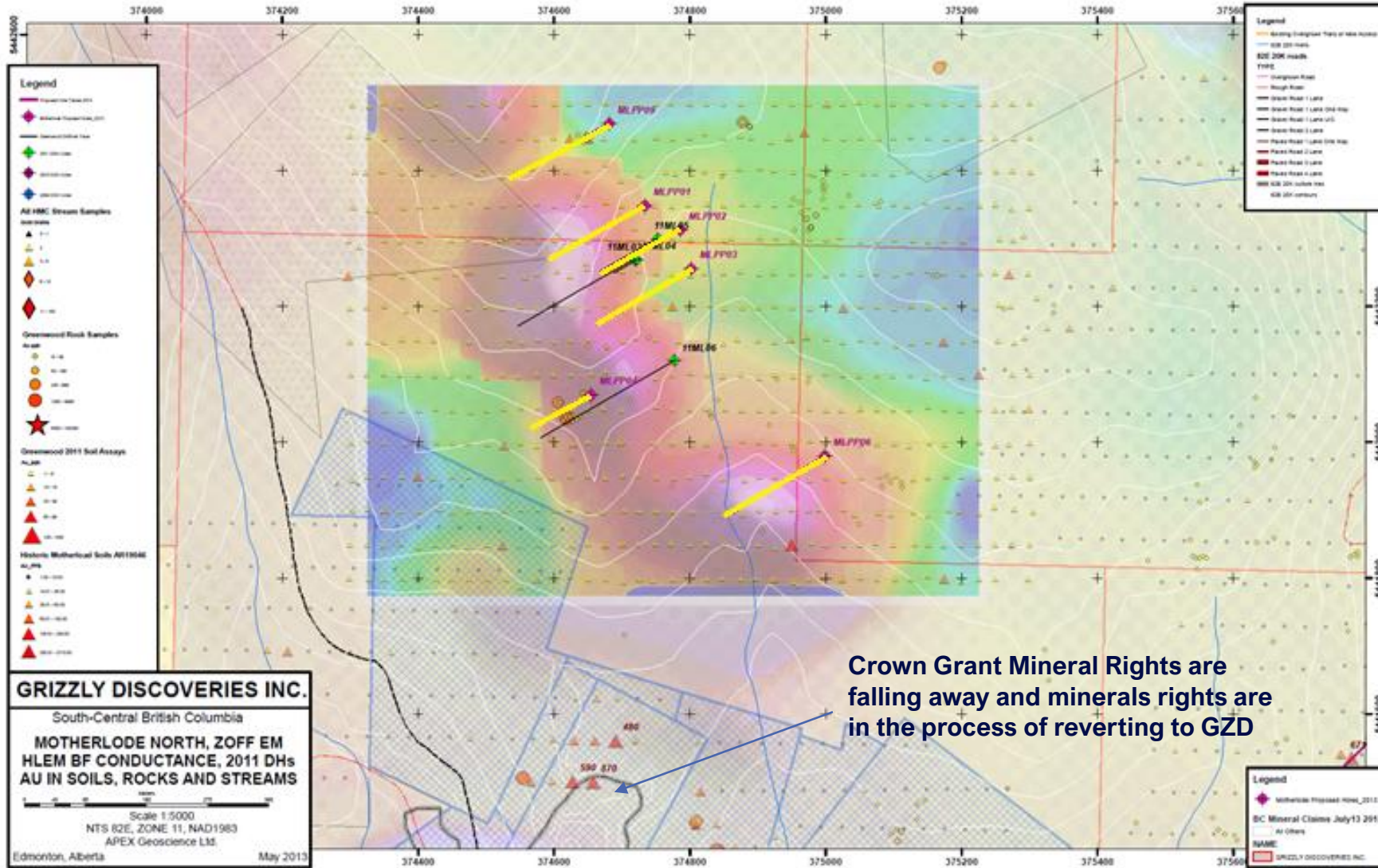


- Motherlode was first staked and explored in 1891, with commercial production commencing in 1901
- The mine and smelter closed in 1919 due to decreasing ore grades
- Woodgreen Copper Mines Ltd. put the Motherlode Mine back in production in 1956 as an open pit operation, and operated the mine until 1962, at which time it was permanently closed
- Since the closure, Cumberland Mining, International Corona, Homestake and Veris have all explored the property to various degrees but with nothing substantial since the 1990's
- Grizzly Motherlode drilling produced:
 - 1.64 g/t Au & 3.15 g/t Ag across 14.85 m core length in hole 11ML05
 - 6.07 g/t Au & 15.13 g/t Ag across 4.5 m core length in hole 11M03 Including a higher-grade zone of 17.15 g/t Au & 41.7 g/t Ag across 1.5 m
- The Motherlode North target warrants follow-up drilling
- Potential for a deeper target zone, below current drill intercepts



Motherlode Intermittent Production Between 1900 and 1962			
4.7 Million Tons	Gold	Silver	Copper
Metal Production	173,000 oz	688,000 oz	77 million lbs
Ore Grade	1.27 g/t	5.04 g/t	0.82%

Proposed Motherlode/Motherlode North Drill Program



Magnetite - Chalcopyrite Skarn

Crown Grant Mineral Rights are falling away and minerals rights are in the process of reverting to GZD

FIGURE 10

Motherlode/Motherlode North – Mineral Claim Status



- Crown Grants are officially subject to forfeiture
- They are currently in Escheat – 90 day forfeiture period passed last September with no payment of taxes
- Former owner was Veris Gold – owned Jerritt Canyon and went thru bankruptcy and disposal of those assets – Greenwood holdings dropped and in forfeiture

Mineral lands in GREENWOOD, SIMILKAMEEN (SDYD) Land District, KAMLOOPS Land Title District (Folio 026700), owned by VERIS GOLD CORP, 174 W 17TH AVE VANCOUVER BC V5Y 1Z6; Undersurface Charge Nos, LOT 000602 KJ54782 Claim Name GREAT HOPES, LOT 000704 KJ54784 Claim Name MOTHER LODGE, LOT 001254 KJ54780 Claim Name OFFSPRING FRACTION, LOT 001255 KJ54781 Claim Name ST LAWRENCE; 41.14 in area, were assessed taxes for the 2015-2021 taxation years, and that taxes, interest and penalties in the amount of Taxes-\$360.01; Interests calculated to 8/18/2021 - \$108.35; Penalties-\$300.00; Payments received-\$0.00; Total unpaid Mineral Land Taxes-\$768.36, remain unpaid.

Mineral lands in GREENWOOD, SIMILKAMEEN (SDYD) Land District, KAMLOOPS Land Title District (Folio 026212), owned by VERIS GOLD CORP, 174 W 17TH AVE VANCOUVER BC V5Y 1Z6; Undersurface Charge Nos, LOT 001014 KJ54775 Claim Name GREYHOUND; 20.90 in area, were assessed taxes for the 2015-2021 taxation years, and that taxes, interest and penalties in the amount of Taxes-\$182.91; Interests calculated to 8/18/2021-\$76.46; Penalties-\$300.00; Payments received-\$0.00; Total unpaid Mineral Land Taxes-\$559.37, remain unpaid.

8/19/2021

The British Columbia Gazette – May 20, 2021

Copyright (c) Queen's Printer,
Victoria, British Columbia, Canada

License
Disclaimer

Volume CLXI, No. 20
May 20, 2021

The British Columbia Gazette
Published by Authority

MINERAL LANDS SUBJECT TO FORFEITURE

Mineral Land Subject To Forfeiture - take notice that, pursuant to Section 13 of the *Mineral Land Tax Act*, the following mineral lands have been assessed taxes in the amounts and in the years indicated and unless the unpaid mineral land taxes, together with any interest, are paid within 90 days from the date the notice is published in the Gazette, the minerals and the right to work, win and carry away the minerals, are forfeited to the government:

Drilling targets exist at the Motherlode and Sunset Pits



Motherlode Intermittent Production Between 1900 and 1962

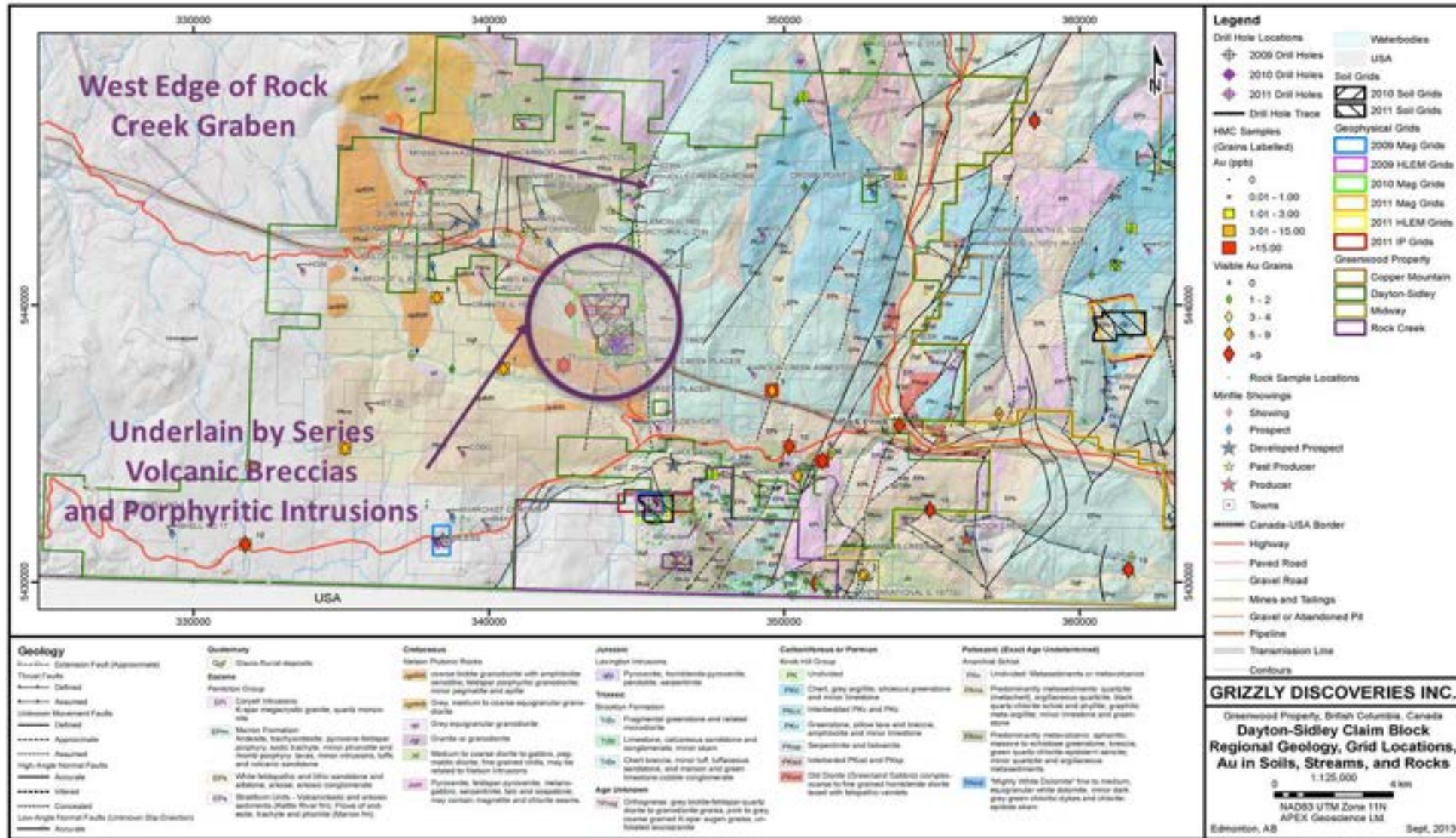
4.7 Million Tons	Gold	Silver	Copper
Metal Production	173,000 oz	688,000 oz	77 million lbs
Ore Grade	1.27 g/t	5.04 g/t	0.82%

Grizzly Greenwood Drilling Highlights

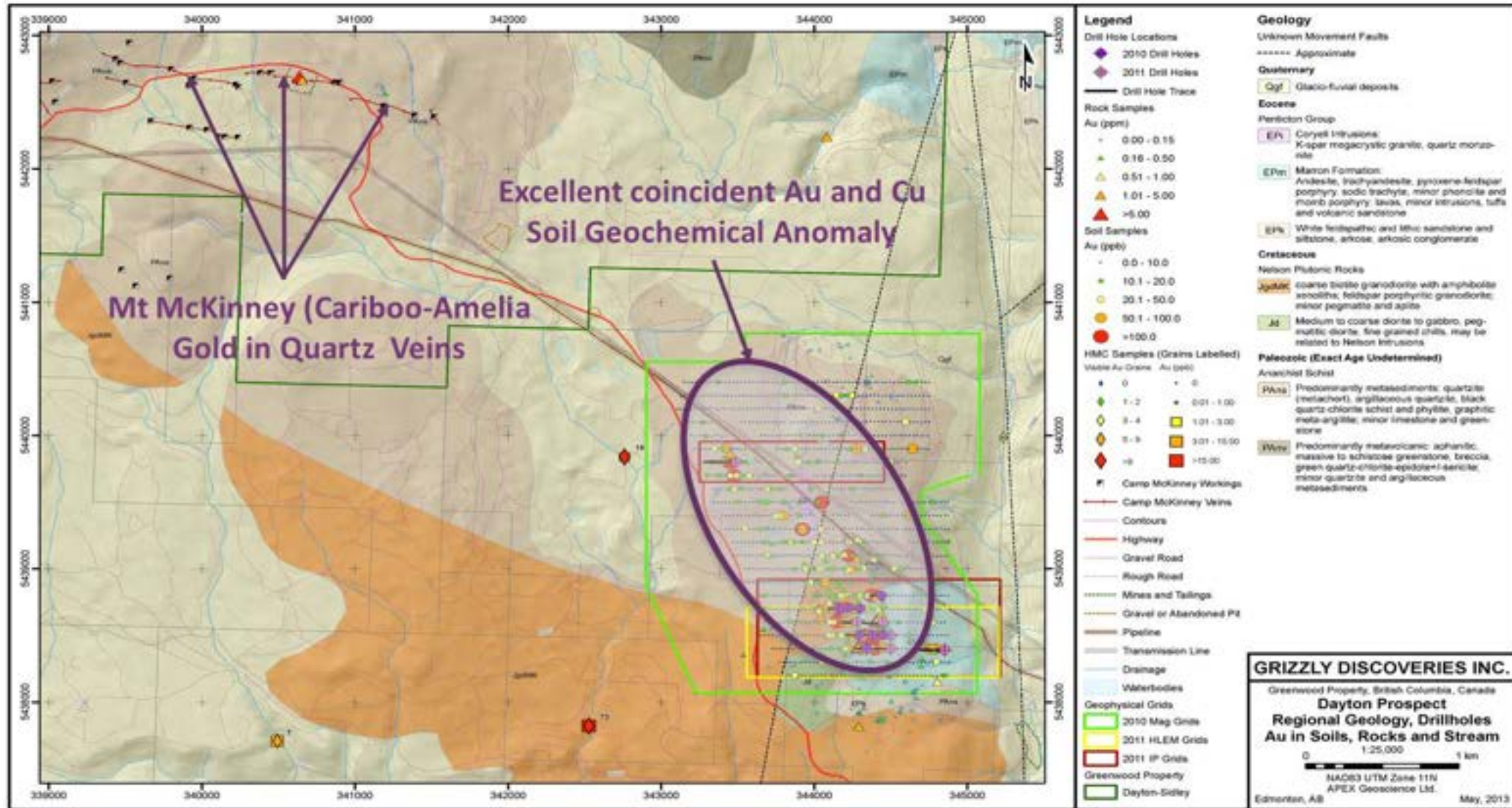


Target	Drillhole	Interval (m)	Gold (g/t)	Silver (g/t)	Copper%	Copper *Eq%
Ket 28	KT-1	6.1	8.91			
Ket 28	94RM1-2C	3.35	52.18			
Ket 28	9KT01	11.0	2.77	2.38		
Ket 28	9KT02	2.0	11.9	3.2		
Copper Mountain	10CM07	30.0	1.0	4.65	0.03	
<i>includes</i>	10CM07	5.0	4.31	10.14	0.06	
Copper Mountain	10CM11	7.0	1.1	2.12	0.08	
Dayton	10DA02	86.5	0.18		0.055	
Dayton	11DA09	51.0	0.43	0.81	0.15	0.4
Motherlode	11ML03	19.0	1.56	11.12	0.07	
<i>includes</i>	11ML03	4.5	6.07	15.13	0.03	
Motherlode	11ML05	14.85	1.64	3.15	0.01	
<i>includes</i>	11ML05	1.5	6.79	11.10	0.05	
Sappho	10SP03	63.5	0.22	6.57	0.124	0.38

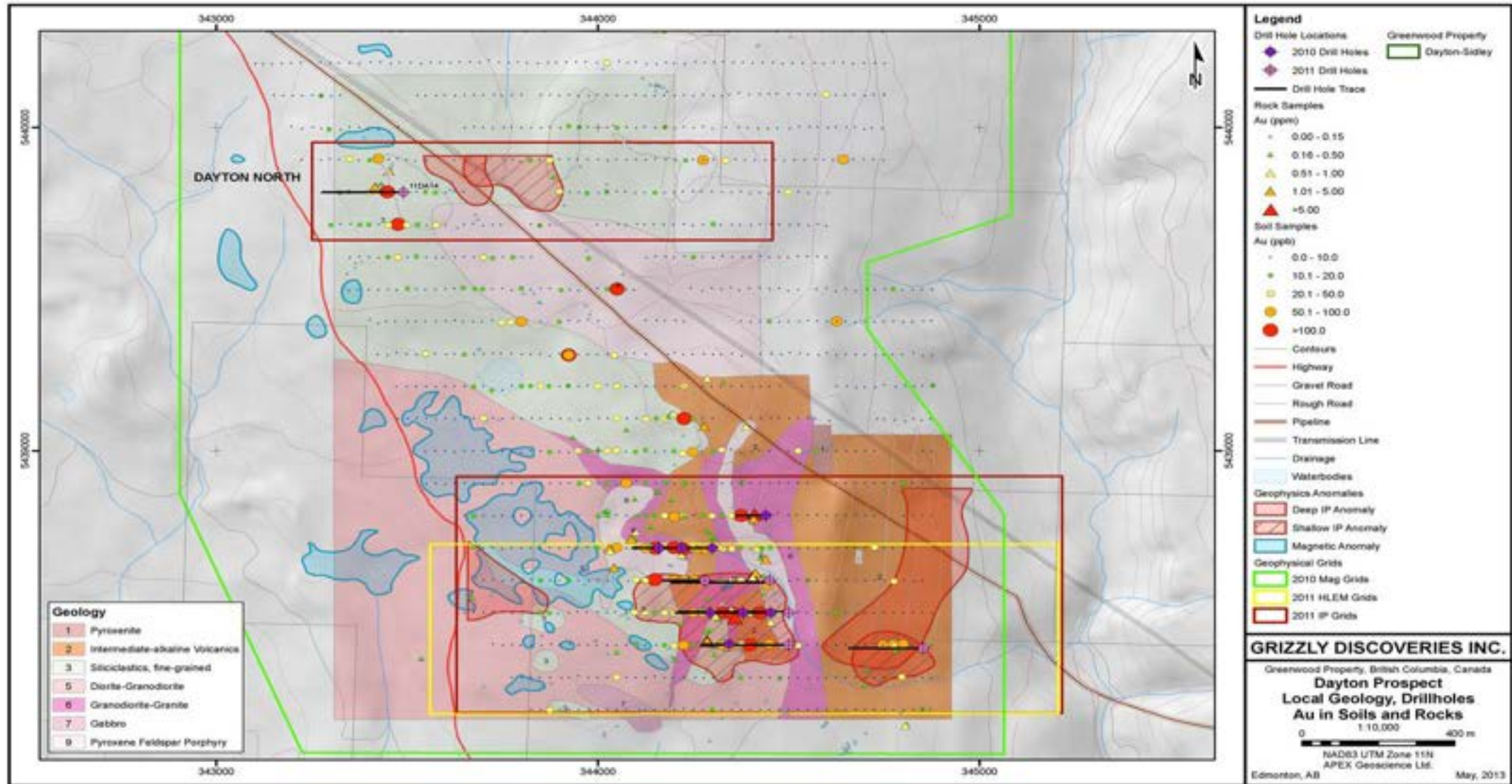
Dayton Regional Geology – Edge of Graben



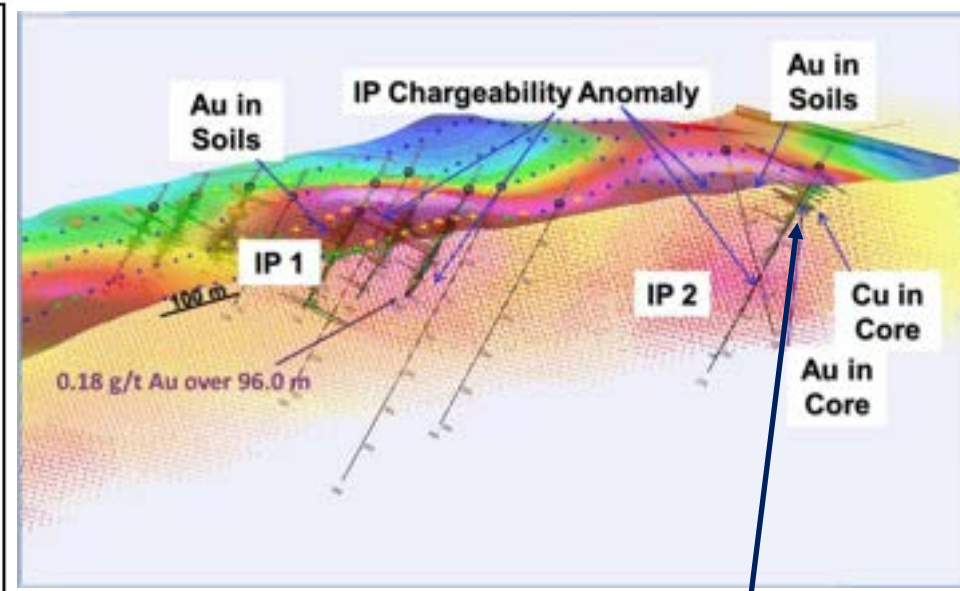
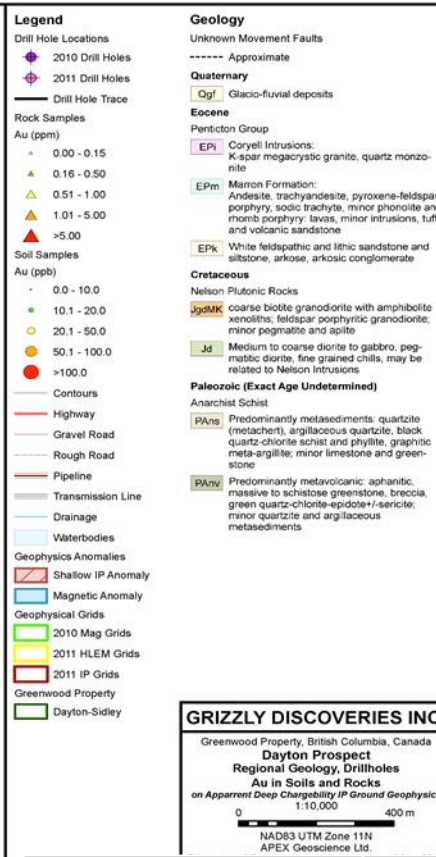
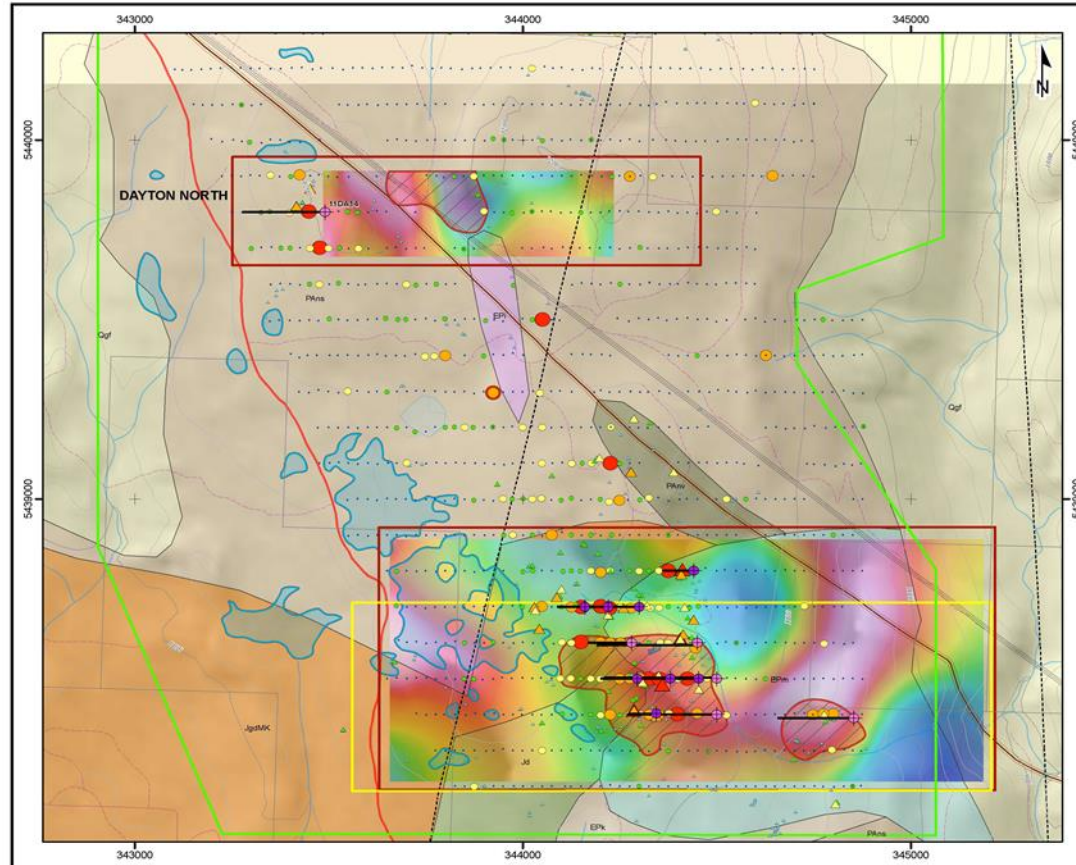
Dayton Geochemistry Cu-Au Anomaly



Dayton Property Geology – Series of Intrusions



Dayton Drilling & IP Target to Follow-up Drill



0.4% CuEq over 51 m at surface with potassic alteration – No Follow-up

■ Intersection in 11DA09 hosted in a pervasively altered mafic to intermediate volcanic breccia – Au-Cu-Ag are associated with strong potassic alteration

Target	Drillhole	Interval (m)	Au (g/t)	Ag (g/t)	Cu %
Dayton	10DA01	96.0	0.18		0.029
Dayton	10DA02	86.5	0.18		0.055
Dayton	11DA09	51.0	0.43	0.81	0.15

Use of Proceeds for Exploration 2022



Robocop

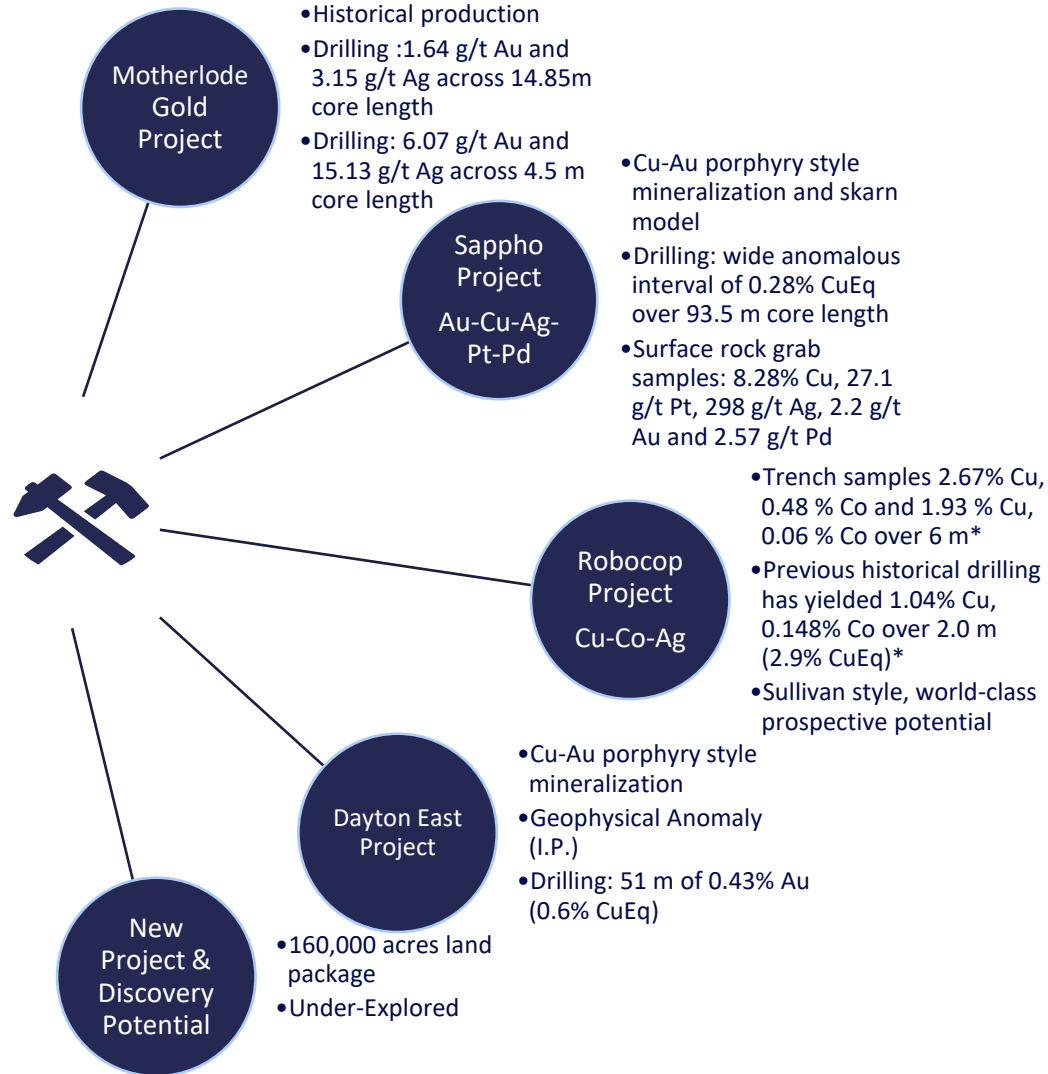
- A number of strong untested Cu-Co geochemical anomalies associated with EM anomalies potentially indicative of increased concentrations of sulphide mineralization
- Considering conducting follow-up ground geophysical surveys including but not limited to one or more of HLEM, TDEM Loop and/or IP surveys to provide a better focus for drill targeting of possible sulphide zones = \$50,000
- Application for drilling of 20 holes (10 in year 1) was submitted to BC Government in July, 2021; 2,000 m drill program = \$500,000

Greenwood

- Permits in place for drilling at Motherlode (Skarn Au-Ag-Cu-Pb-Zn) and Dayton (Au-Cu Porphyry); 3,000 m drill program = \$750,000
- Additional field work and possibly one or more of ground geophysical surveys and/or drilling at Midway and Ket 28; work to be conducted by joint venture partners on the order of \$500,000



Portfolio of Projects for Exploration and Joint Venture



Projects & Targets with New Discovery Potential

CONTACT INFORMATION

Brian Testo (CEO)	Nancy Massicotte Corporate Development	Jim Greig, Director Corporate Development
T: (780) 712-3559 E: info@grizzlydiscoveries.com	T: (604) 507 3377 E: nancy@grizzlydiscoveries.com	T: (778) 788-2745 E: jgreig@grizzlydiscoveries.com